



Govern Deploy EZ

Release 6.0 Version 1.0

Last Revision Update: 12/18/14

Disclaimer

Harris Govern has taken due care in preparing this manual. However, nothing contained herein modifies or alters in any way the standard terms and conditions of the purchase, lease, or license agreement by which the product was acquired, nor increases in any way the liability of Harris Govern to the customer.

Table of Contents

| | |
|--|-----------|
| Disclaimer | i |
| Introduction | 1 |
| Features and Benefits | 2 |
| What's New | 2 |
| New Look and Feel | 2 |
| Install Packs | 3 |
| Chapter 1: Getting Started | 4 |
| Govern Software | 4 |
| Govern Deploy EZ | 4 |
| Govern Product Suite Deployments | 4 |
| Prerequisites | 5 |
| Third-Party Software | 5 |
| Tips and Guidelines | 5 |
| Administrator Login | 5 |
| UNC Format | 5 |
| Things to Know | 6 |
| Location of the Binary Files | 6 |
| Deployment Directory | 6 |
| Database Server Name and Type | 6 |
| Serial Number and Organization Name | 6 |
| Name of Your Deployment | 6 |
| Third-Party Software | 7 |
| Microsoft.NET Framework Version | 7 |
| Crystal Reports Runtime | 8 |
| Prerequisites | 8 |
| Installing Crystal Reports Runtime Engine | 9 |
| Oracle Environments | 9 |
| Using the Oracle Configuration File tnsnames.ora | 10 |
| Downloading the ODAC Installation Package | 10 |
| Uninstalling the Current Oracle Client | 10 |
| Installing the Updated Oracle Client | 11 |
| Verifying the Installation | 11 |
| Troubleshooting the ODAC Connections | 12 |
| Using Oracle SQL Developer | 12 |
| Installing and Configuring Govern Deploy EZ | 13 |
| Recommended Setup | 13 |
| Installing Govern Deploy EZ | 13 |

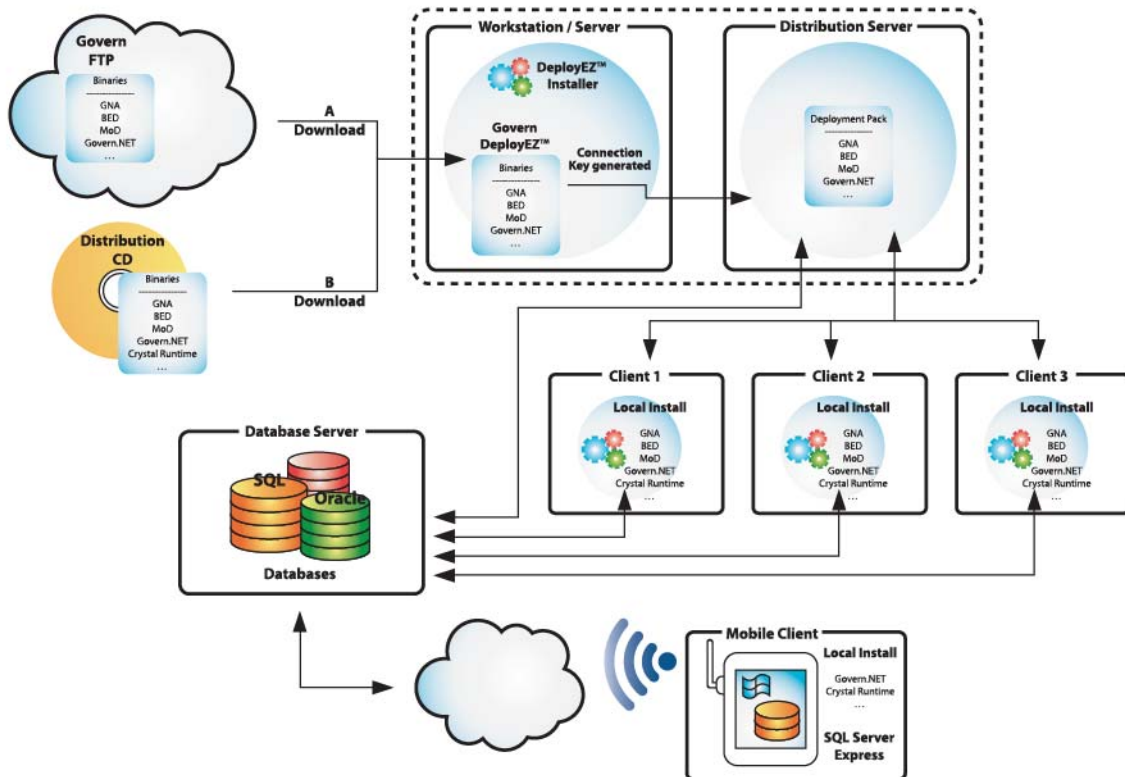
| | |
|--|-----------|
| About the Directory Structure Created | 15 |
| Deployment Folders | 16 |
| Files | 17 |
| Deployment Directory | 18 |
| Chapter 2: Creating and Managing Deployments | 19 |
| Configuring Default Parameters for the Govern Product Suite | 20 |
| Accessing the Deploy EZ Parameter Screen | 20 |
| Opening the Parameter Screen | 20 |
| General Parameters | 23 |
| Setting the Default Culture | 23 |
| Forcing the Latest Version | 25 |
| Use ClickOnce Technology for Deployment | 26 |
| Applications | 30 |
| Exiting the Deploy EZ Parameters Screen | 32 |
| About Automatic Locking | 33 |
| Creating a New Deployment | 35 |
| Defining the Deployment Directory | 35 |
| Downloading the Binary Files | 38 |
| Downloading Binaries From a Directory | 38 |
| Importing the Binary Files | 40 |
| Creating a Connection Key | 43 |
| Installing the Binary Files | 49 |
| Downloading Binaries from an FTP Site | 52 |
| Downloading a Custom Package | 53 |
| Deleting Unused Binaries | 53 |
| Creating a Mobile Deployment | 55 |
| Steps to Follow When the Deployment is Complete | 56 |
| Updating a Deployment | 57 |
| Steps to Follow When the Update is Complete | 62 |
| Deleting a Deployment | 64 |
| Chapter 3: Installing and Maintaining Deployments for End-Users | 67 |
| Maintaining the End-User Deployment | 67 |
| Installing and Updating Govern Applications | 68 |
| Installing an Application | 69 |
| Installing Services and Other Packages | 70 |
| Chapter 4: Uninstalling, Reinstalling, or Rolling Back Applications and Deployments | 71 |
| Completely Uninstalling a Deploy EZ Deployment | 72 |
| Reinstalling Deploy EZ | 75 |
| Performing a Rollback | 76 |
| Force Latest Version | 76 |

| | |
|--|-----------|
| Performing the Rollback Procedure | 78 |
| Performing a Database Verification | 82 |
| Changing the Deployment Directory or Connection Key | 84 |
| Location of ClickOnceSettings.xml | 84 |
| Deploy EZ 5.1 or Lower | 84 |
| Deploy EZ 6.0 or Higher | 85 |
| Defining the New Deployment Directory | 85 |
| Chapter 5: Troubleshooting | 87 |
| Application Does Not Start..... | 87 |
| Authentication Error | 88 |
| Naming Deployments..... | 90 |
| Changing Deployment Server Location | 90 |
| Changing a Workstation Hosting Deploy EZ..... | 91 |
| Duplicate Key Error in Oracle Databases | 92 |
| Oracle and Different Character Sets | 93 |
| Index | 94 |

Introduction

Overview

Govern Deploy EZ uses *ClickOnce* technology from Microsoft®. *ClickOnce* deployments facilitate the task of managing multiple deployments with multiple applications and multiple applications. All deployments, such as production, testing, and live, are maintained from a single location on a Web server. All authorized users can download the applications from a link to this location. Updates are automatic. Similarly, rollbacks to previous versions, when required, can be made automatic.



Rev.05
2011.05.11

Features and Benefits

With Govern Deploy EZ, you can:

- Maintain all the deployments required by your organization from one central location on a Web server.
- Install and maintain all administrative and user applications, in the Govern OpenForms Product Suite from this location.
- Create customized deployment packages to meet the requirements of all your end-users and system administrators.
- Maintain multiple versions of the same applications to meet the different needs of your organization, such as testing and production.
- Roll back to an earlier version easily and seamlessly.
- Ensure that only one version of a deployment is created at a time with the automatic lock.

What's New

New Look and Feel

NEW

Govern Deploy EZ has a whole new look and feel. It is now a ClickOnce application. It is maintained on a Web server and installed from a Web link. Whenever you launch the application from your computer, a verification is made, and if a more recent version exists, it is used. This ensures that all users have the latest version and all the latest features of Deploy EZ.

Deploy EZ is not tied to any one Govern OpenForms release. You can use it to install any version of any application.

Note: There is a new configuration path for the installation files. This is important if you need to change the deployment server or uninstall your deployment.

When creating a deployment directory for Govern Deploy EZ, you are required to use the UNC format. If you try to enter a drive name in a mapped drive, an error occurs and you are unable to continue: *See Defining the Deployment Directory on page 35.*

Install Packs

The following are now downloaded in the Install Packs:group of Deploy EZ:

- Batch Scheduler Service Setup
- Batch Service Worker
- Crystal Report Runtime
- Property Control Web Service
- WCF Services Setup
- Timestamp.xml

Chapter 1: Getting Started

Overview

This chapter describes the following:

- Govern Software on page 4
- Prerequisites on page 5
- Tips and Guidelines on page 5
- Microsoft.NET Framework Version on page 7
- Crystal Reports Runtime on page 8
- Oracle Environments on page 9

Govern Software

This section provides a brief description of Govern Deploy EZ and Govern Product Suite deployments.

Govern Deploy EZ

Govern Deploy EZ manages and installs your Govern OpenForms Product Suite deployments. You can download multiple versions of Govern applications and packages; create multiple deployments; and maintain them all from a single location. You can set up automatic installation updates to ensure that all your users have the same version of each application and package that they are running. Alternatively, you can give users the choice to download the latest update or to continue using their currently installed versions.

Govern Product Suite Deployments

The Govern Product Suite is made up of multiple applications and packages including:

- Govern
- Govern New Administration (GNA)
- Govern Scheduler
- Govern Query Tool
- Govern Business Entity Designer

- Govern Model Designer
- Govern Resource Files
- Govern System Files
- Govern Custom Controls

You can create different deployments made up of different applications. For example, you could create separate deployments according to the needs of users, system administrators and end-users. You could maintain separate up-to-date versions of the same applications for testing and production purposes.

Prerequisites

Third-Party Software

The following third-party software is required on each client computer running Govern applications or on each terminal server, if you are using terminal servers and roaming profile:

- Microsoft.NET Framework Full Version is 4.5 or later is required. See *Microsoft.NET Framework Version* on page 7.
- Crystal Reports Runtime: See *Installing Crystal Reports Runtime Engine* on page 9.

Note: Installation of the custom *Crystal Reports 2008* runtime prepared by *MS Govern* is required on each client system.

If you are running Govern applications in an Oracle environment, see *Oracle Environments* on page 9.

Tips and Guidelines

Administrator Login

In order to use Govern Deploy EZ, you need to log in as an administrator.

UNC Format

Use UNC format when entering the name of the directory, such as
`\\ServerName\Directory\DeploymentDirName\`.

NEW

This is a requirement. If you try to enter a path by entering a drive letter in a mapped drive, an error appears and you are unable to continue.

Things to Know

Before creating a new deployment, ensure that you know the:

Location of the Binary Files

You need to download the binary files from an ftp site or directory.

Deployment Directory

You need to enter the path to the directory you are using for your OpenForms deployments.

Database Server Name and Type

You need to enter the name and type of the server where your Govern database is located and the name of your Govern database.

Serial Number and Organization Name

When you install Deploy EZ for the first time, or when you create new deployments, you are required to provide your *Organization Name* and *Serial Number*. Locate this information and have it ready.

Name of Your Deployment

When you create the deployment, you are prompted for the name of your deployment.

Use the following format: `DATABASENAME_SERVERNAME_SERVERTYPE` for example, `GOVERNDATABASE_GOVERNSERVER_SQL` Use all uppercase characters.

Third-Party Software

Overview

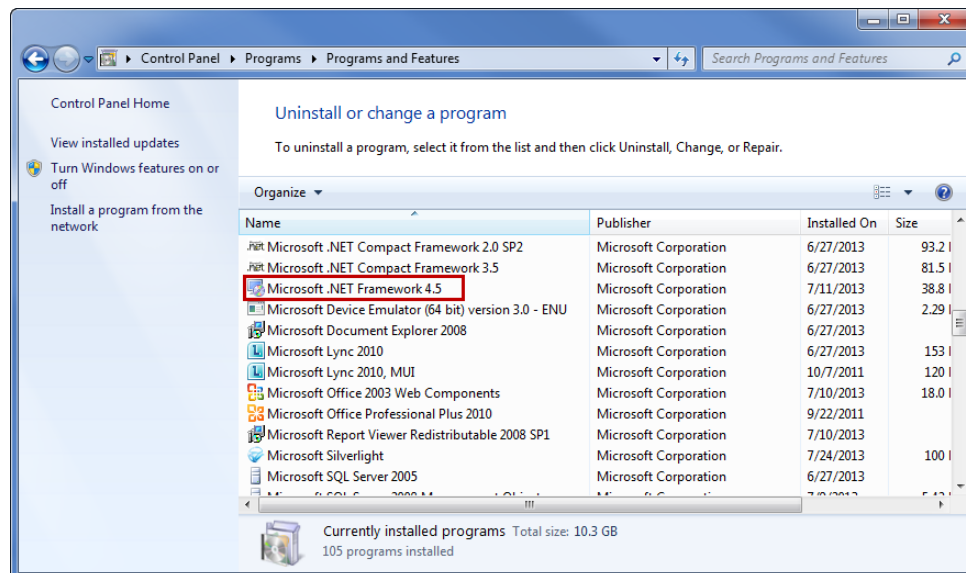
This section describes the following topics:

- Microsoft.NET Framework Version on page 7
- Crystal Reports Runtime on page 8
- Oracle Environments on page 9

Microsoft.NET Framework Version

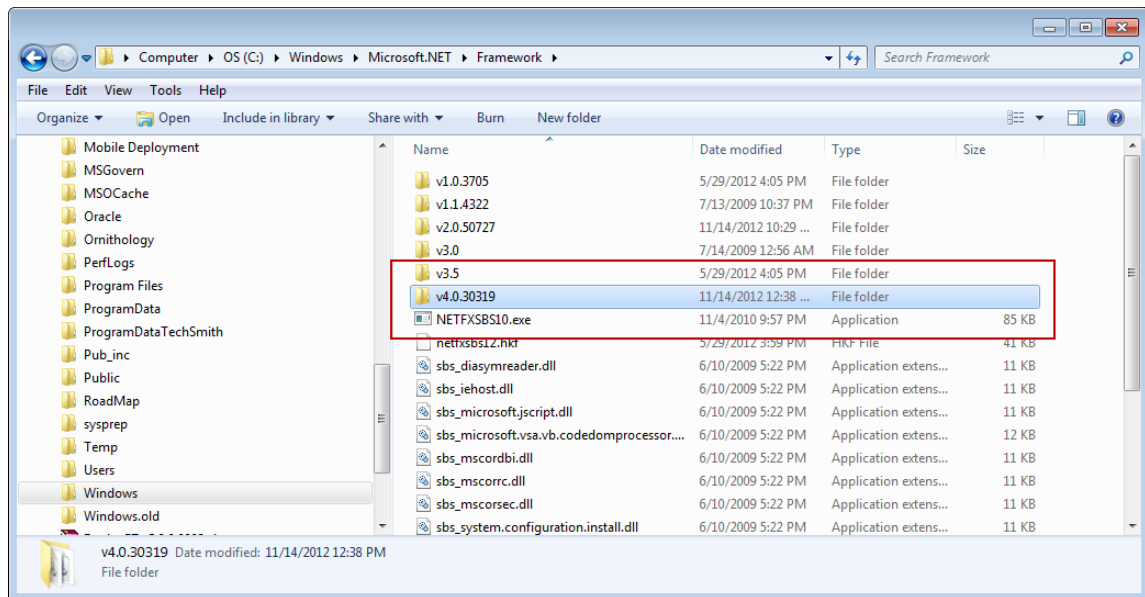
Ensure that Microsoft.NET Framework full version 4.5 or later is installed on the deployment server as well as all servers and computers running Govern Product Suite applications. There are several ways to verify the Microsoft.NET Framework version.

You can view the listing in Windows Control Panel under Add Remove Programs or Uninstall a Program.



Ensure that .NET Framework 4.5 Full Profile is installed.

For a more detailed view, expand the following folders on the system drive: Windows > Microsoft.NET > Framework. Each version of Microsoft.NET Framework is listed in a separate folder.



Crystal Reports Runtime

This section describes the Crystal Reports prerequisites and installation procedures for the Govern Product Suite.

Prerequisites

The following are prerequisites:

- Crystal Reports Runtime is required if you are running Crystal Reports in Govern, GNA, or the Govern Batch Scheduler. It is now downloaded with the Install Packs when you create or update a Govern OpenForms deployment.

The path for Govern OpenForms, v6 is the **Deployment Root** folder > **Install Package > 6.0 > Crystal Report Runtime**. See also *Installing Services and Other Packages on page 70*.

Note: If you are also running Govern for Windows, you need Crystal Reports 2008 as well.

Installing Crystal Reports Runtime Engine

Note: When installing multiple runtime engines, it is important to use the same version for all.

Complete the following procedure after creating or updating the deployment for the computers that require Crystal Reports.

To install Crystal Reports Runtime Engine:

1. Open the root deployment for your deployment.
2. Open the **Install Package** folder.
3. Open the folder for the **Govern OpenForms version** that you using.
4. Open the **Crystal Reports Runtime** folder.
5. Select the latest installation zip file.
6. Double-click on the file to start the installer.
7. Follow the instructions on the screen.

Oracle Environments

In order to connect to an *Oracle* database, you need to install the *Oracle Client*. If there are several instances of the database, such as separate instances for Testing, Training, and Production, a configuration is required for each one. The same installation of the *Oracle Client* on each client computer that connects to the database is also required. When *Govern Deploy EZ* successfully connects to the Oracle database, a connection key is generated.

For further details about connecting to an Oracle database, refer to the *Govern System Configuration & Administration guide*. For instructions on installing and configuring the Oracle Client, contact *Oracle Technical Support*.

This section covers the following topics:

- Using the Oracle Configuration File *tnsnames.ora* on page 10
- Downloading the ODAC Installation Package on page 10
- Uninstalling the Current Oracle Client on page 10
- Installing the Updated Oracle Client on page 11
- Verifying the Installation on page 11
- Troubleshooting the ODAC Connections on page 12

- Using Oracle SQL Developer on page 12

Using the Oracle Configuration File `tnsnames.ora`

You can speed up the configuration process for multiple client installations, by using the configuration file, TNSnames for Oracle, `tnsnames.ora`. This file defines the databases addresses required for establishing connections.

You can copy this file from the first client computer that was configured, and placed in the same location for all other installations. An example path is as follows:

```
installDrive:\oracle\product\11.1.0\client_1\net-  
work\admin
```

Otherwise, this file can be found in the `Oracle_Home\Network\Admin` directory.

Downloading the ODAC Installation Package

Download the 32-bit *Oracle Data Access Components* (ODAC) for .NET version 11.2.0.1.0 from the Oracle website:

<http://www.oracle.com/technetwork/database/windows/downloads/utilsoft-087491.html>

Uninstalling the Current Oracle Client

If your are updating your version of the Oracle Client, it is recommended to uninstall the current version, before installing the new version.

To uninstall the current Oracle client:

1. Expand the Oracle Installation Products menu under the Windows Start menu.
2. Click **Yes** when prompted to remove the folders
3. Reboot if you have a message about a locked database or to ensure that open ddls not open.
4. Delete everything in the Oracle folders.

Installing the Updated Oracle Client

To install the Oracle client:

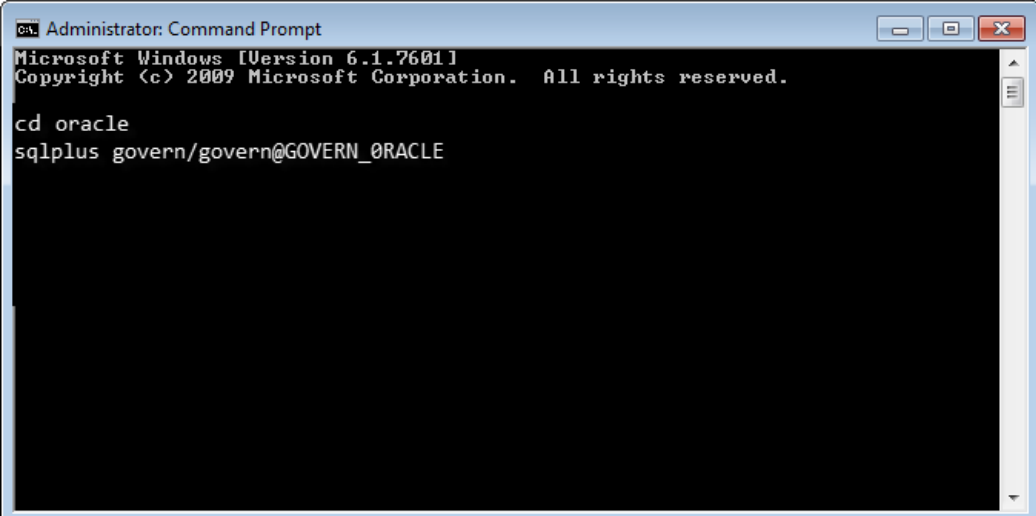
1. Double-click on the setup.exe from the files that were extracted to start the installation.
2. Select a location; `c:\oracle` is recommended.
3. Follow the online instructions.
4. When the installation process is complete, copy `tnsnames.ora` to the `\\client_1\Network\Admin` directory. This file was backed up at the beginning of the installation process. See *Using the Oracle Configuration File tnsnames.ora* on page 10.

Verifying the Installation

Once the installation is complete and `tnsnames.ora` is restored, test the installation.

To test the installation:

1. Launch Windows command prompt.



```
Administrator: Command Prompt
Microsoft Windows [Version 6.1.7601]
Copyright (c) 2009 Microsoft Corporation. All rights reserved.

cd oracle
sqlplus govern/govern@GOVERN_ORACLE
```

2. Enter the following:
 - **cd oracle**

- **sqlplus username of the instance/password]@[instance name**

where username of the instance is the username used to log in to the database instance; password is the password used to log in; and instance name is the name of the database instance

Press the **Enter** key on your keyboard after each line.

For Example:

```
cd oracle
sqlplus govern/govern@GOVERN_ORACLE
```

A message appears informing you that you are connected to the Oracle database.

Troubleshooting the ODAC Connections

If you are installing the same version number of the Oracle client, e.g. 11G, ensure that you test each connection. When installing a more recent version number of the Oracle Client, or if the current connections do not work, it is recommended that these connections be recreated. You need System Administrator access rights to create an ODAC connection.

Using Oracle SQL Developer

Note: Users of SQL Developer should verify if there is a need to install a new version and recreate connections.

Installing and Configuring Govern Deploy EZ



Overview

Deploy EZ, version 6.0 and higher, is a ClickOnce application. It is installed directly and instantly from a Web link. Like most Windows applications, a shortcut is created on the desktop and in the Window start menu. Unlike standard Windows applications, ClickOnce applications are saved by user on the computer. This means that every user who needs to create or maintain deployments needs to install Deploy EZ, even if they are working on the same computer. However, this is done instantly with a single click.

The configuration settings for Deploy EZ are saved in a configuration file, `ClickOnceSettings.xml`, in the user profile of each user who installed the application. This file contains the default culture for Deploy EZ, such as US English (en-us) or Canadian French (fr-ca), and the path to the deployment directory. Two administrators running Deploy EZ on the same server could easily run the applications in different cultures, but point to the same deployment directory and manage the same deployments.

Recommended Setup

Before creating a deployment for the Govern Product Suite applications, create a deployment directory to which all users have read-write access.

Ensure that you have an Internet connection on the server where you are installing Deploy EZ. Ensure that you have access to the ftp site or directory from which you downloading the files.

Note: Some firewall configurations may interfere with the installation and download of the Deploy EZ application over the Internet.

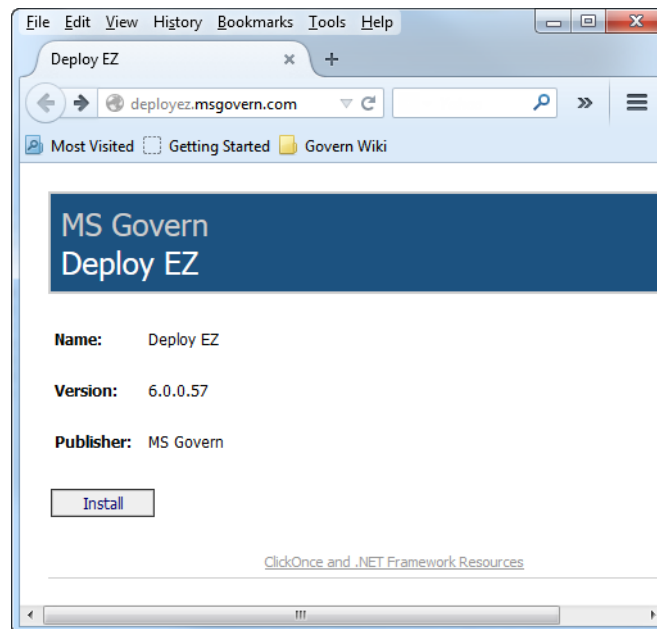
Installing Govern Deploy EZ

When installing Govern Deploy EZ, administrator access rights to the server are required.

To install Govern Deploy EZ:

1. Launch your Internet browser.
2. Enter the address: deployez.msgovern.com.

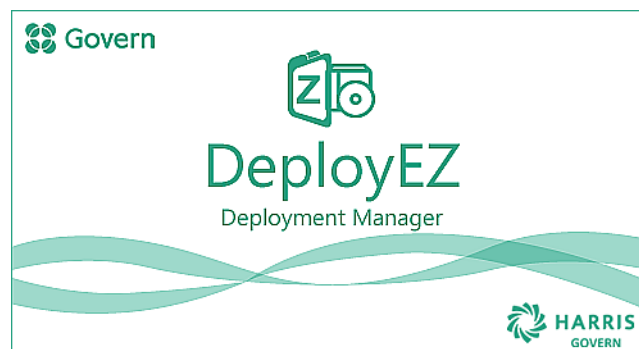
The Deploy EZ installation page appears.




The interface displays the Deploy EZ application name and version.

The **ClickOnce and .NET Framework Resources** link provides direct access to the Microsoft Developer Network where you can find answers to all questions about ClickOnce technology.

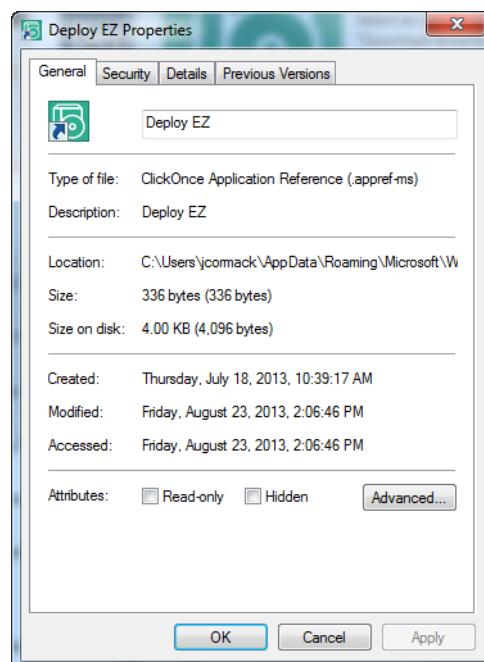
3. Click **Install**.
4. The splash screen appears.



5. Deploy EZ opens directly to one of the following:
- The Main Menu if you are maintaining an existing deployment. See *Updating a Deployment* on page 57.
 - The New Deployment window if you are installing a new deployment. See *Creating a New Deployment* on page 35.

At this point in a new deployment, Govern Deploy EZ is located in the Windows Start menu  **Deploy EZ** .

If you right-click on this icon, you can verify the properties of Deploy EZ.



About the Directory Structure Created

This section describes the default directory structure in the deployment root folder.

| Name | Date modified | Type | Size |
|--------------------------------|--------------------|----------------|--------|
| Database | 7/8/2013 11:14 AM | File folder | |
| DatabaseConfigFiles.XML | 7/8/2013 12:48 PM | File folder | |
| Deployments | 8/30/2013 5:49 PM | File folder | |
| Documentation | 7/11/2013 11:45 AM | File folder | |
| HELP | 7/10/2013 1:04 PM | File folder | |
| PostBuildEvent | 7/12/2013 10:52 AM | File folder | |
| Reports | 8/19/2013 12:36 PM | File folder | |
| ResourceFiles | 9/4/2013 2:04 PM | File folder | |
| Shortcut | 9/4/2013 2:20 PM | File folder | |
| Test | 3/13/2013 2:22 PM | File folder | |
| TNSFileDeployments | 5/11/2012 4:10 PM | File folder | |
| Trace | 9/3/2013 3:05 PM | File folder | |
| ClickOnceDeployments.xml | 9/4/2013 2:26 PM | XML Document | 89 KB |
| ClickOnceDeployments.xmlbackup | 5/17/2013 8:35 AM | XMLBACKUP File | 71 KB |
| GIS_DB.xml | 3/5/2013 9:54 AM | XML Document | 4 KB |
| GovernDABConfig.xml | 9/4/2013 2:37 PM | XML Document | 130 KB |

Deployment Folders

Binaries: This is a temporary folder. It is created when you download the binary files from the directory at the beginning of the deployment folder. As the required files are downloaded to other locations, there is no need to access this folder.

DatabaseConfigFiles.XML: This folder is no longer in use.

Deployments: This folder contains a folder for the deployment. This subfolder contains the installation file for each application and a subfolder for the version number containing dlls for the deployment.

Documentation: This folder contains the documentation downloaded for the deployment.

Install Packages: This folder contains the installation packages that are required for the Govern Batch Scheduler, Crystal Reports runtime, and the Web services.

Help: This folder contains the structure for the Help files as described in *Govern General Information* guide.

Resource Files: The Resource files contain the text that appears on the interface, including headings, labels, exceptions, and error messages. See

Changes to Govern Deploy EZ Resource File Management on page 35 for details.

- GovernNet.en.resources: English resource file
- GovernNet.fr.resources: French resource file
- GovernNetClient.en.resources: Modifications made by the client to English resource files
- GovernNetClient.fr.resources: Modifications made by the client to French resource files

Shortcut: This folder contains the links that can be sent or made available to users for installing the Govern Product Suite applications.

Files

ClickOnceDeployments.xml: This file contains configuration information about the deployment, including lock status, deployment path, default culture, theme, serial number, and authentication type. As well, this file contains a list of the applications and packages that have been downloaded.

GovernDABConfig.xml File: This is the Govern Data Access Block (DAB) file. It contains information about the database connection.

Note: This is a required file that should not be moved, renamed, or modified.

ClickOnceSettings.xml: This file contains the path for the deployment and the culture. It is saved in the following locations:

- If you created the deployment with Deploy EZ version 5.1 or lower, the file is located in one of the following, according to the version of Windows you are running:
 - **32-bit Windows:** C:\Program Files (x86)\MS Govern\MS Govern - DeployEZ Installer
 - **64-bit Windows:** C:\Program Files (x86)\MS Govern\MS Govern - DeployEZ Installer
- If you created the deployment with Deploy EZ version 6.0 or higher, it is stored by user, in the following location:
C:\Users\<username>\AppData\Local\MS Govern\DeployEZ
where username is the name of the user, such as
C:\Users\jcormack\AppData\Local\MS Govern\DeployEZ

Deployment Directory

The deployment directory contains a subfolder for each application in the deployment. It contains the SytemFiles folder. ...

SystemFiles Folder: This folder contains two files with the latest updates for the Govern user forms:

DynamicSearchReference.xml: The Dynamic Search Reference file contains the latest search styles and groups for the predefined searches. These are used to search for the records in the Govern OpenForms application.

FormReference.xml: This folder contains the latest user forms for the default Govern user forms.

GovernNetConfig.xml: This file contains information about the deployment, the applications that are downloaded.

Chapter 2: Creating and Managing Deployments



Overview

Once the Deploy EZ application is installed, you are ready to start creating and managing deployments of the Govern OpenForms Product Suite applications.

This chapter describes the procedures for creating new deployments and managing existing ones under the following headings:

- Configuring Default Parameters for the Govern Product Suite on page 20
 - General Parameters on page 23
 - Applications on page 30
- Locking Deploy EZ
- Creating a New Deployment on page 35
 - Defining the Deployment Directory on page 35
 - Downloading the Binary Files on page 38
 - Importing the Binary Files on page 40
 - Creating a Connection Key on page 43
 - Installing the Binary Files on page 49
- Downloading Binaries from an FTP Site on page 52
- Downloading a Custom Package on page 53
- Deleting Unused Binaries on page 53
- Creating a Mobile Deployment on page 55
- Updating a Deployment on page 57
- Changing the Deployment Directory Deleting a Deployment on page 64

Configuring Default Parameters for the Govern Product Suite

Overview

This section describes how to configure the default parameters for the Govern Product Suite deployment. The options in this section are displayed on a secondary window, which can be accessed from any Deploy EZ screen.

This section includes the following topics:

- Accessing the Deploy EZ Parameter Screen on page 20
- General Parameters on page 23
- Applications on page 30

Accessing the Deploy EZ Parameter Screen

The Deploy EZ Parameter Screen is used for setting the following defaults for the deployment:

- Culture
- Force Latest Version
- Force Latest Version on Mobile Deployment
- Use Click Once Technology for Deployment

Opening the Parameter Screen

To configure Deploy EZ:

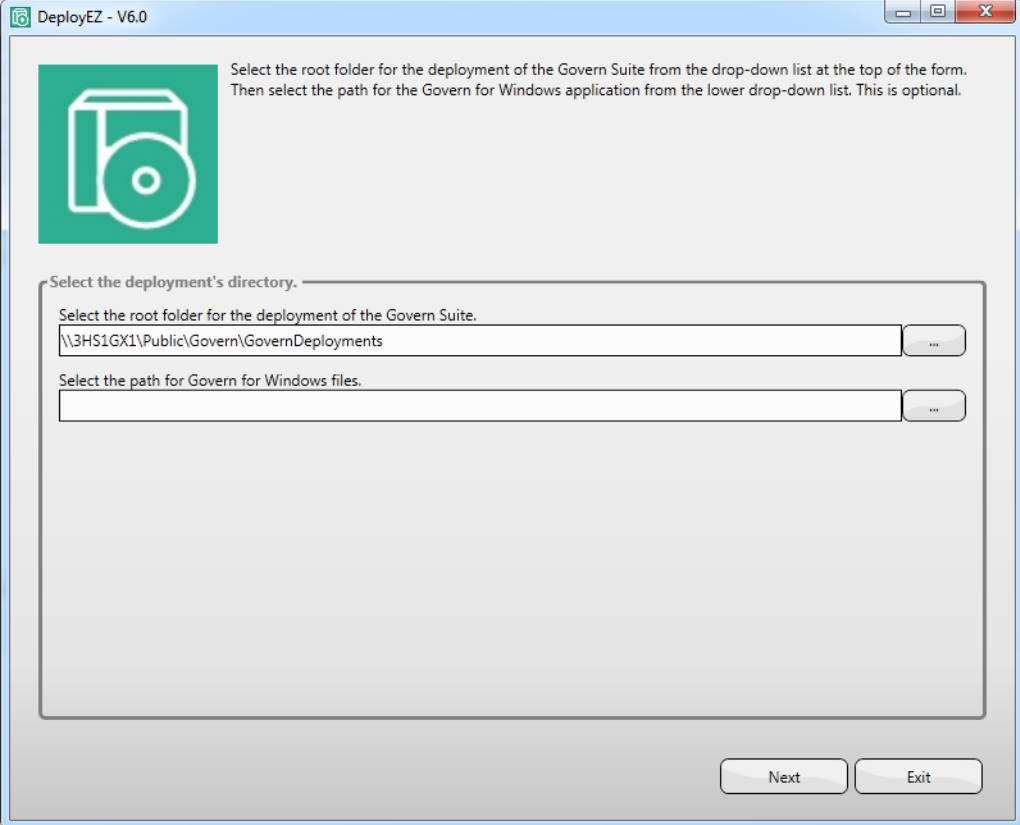
1. Launch the Deploy EZ application.

The application opens to one of the following screens:

- Deployment Directory if this is the first time you are launching Deploy EZ.
- Main Menu if you have already created a deployment.

Screen shots of these screen follow:

Deployment Directory Configuration:



The screenshot shows a Windows-style window titled "DeployEZ - V6.0". Inside the window, there is a green icon of a folder and a CD. To the right of the icon, the text reads: "Select the root folder for the deployment of the Govern Suite from the drop-down list at the top of the form. Then select the path for the Govern for Windows application from the lower drop-down list. This is optional."

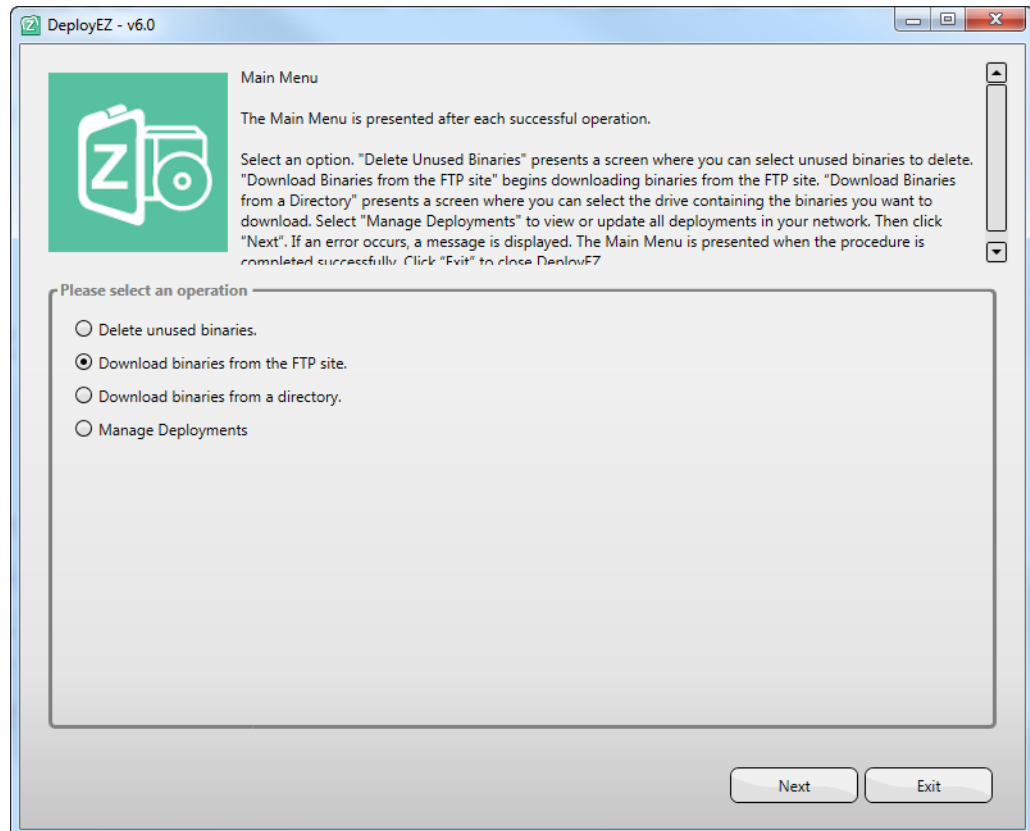
Below this text, there is a section titled "Select the deployment's directory." which contains two text input fields, each with a browse button (three dots) to its right.

The first input field is labeled "Select the root folder for the deployment of the Govern Suite." and contains the text "\\3HS1GX1\Public\Govern\GovernDeployments".

The second input field is labeled "Select the path for Govern for Windows files." and is currently empty.

At the bottom right of the window, there are two buttons: "Next" and "Exit".

Main Menu

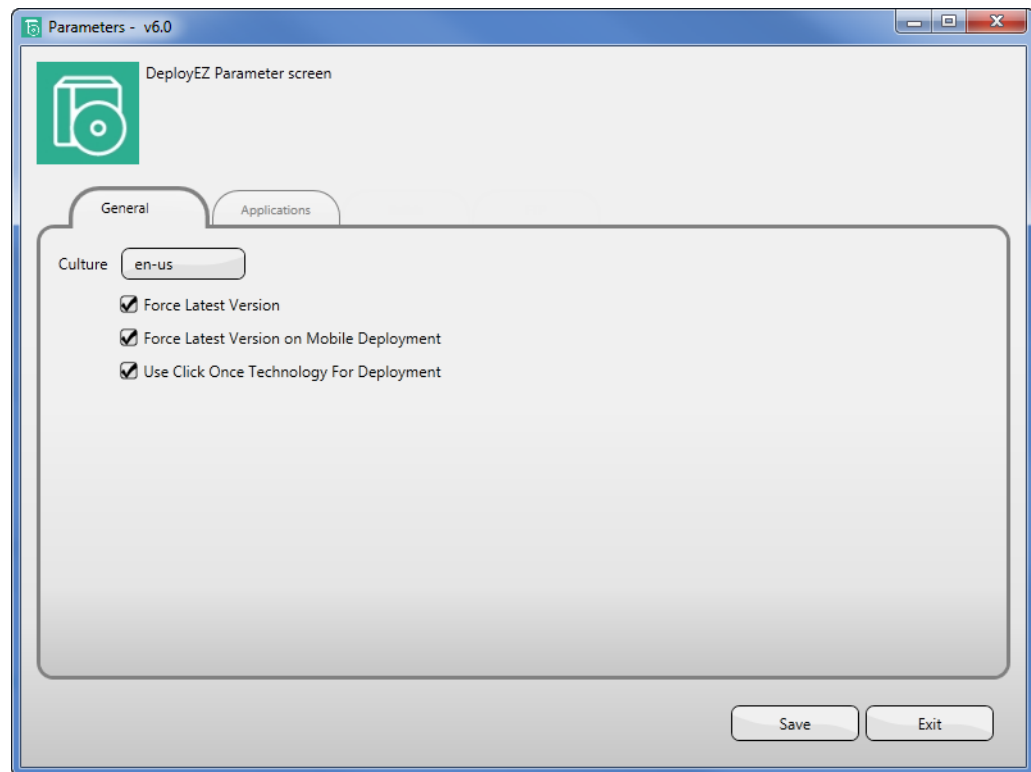


2. Click on the image in the upper left of the interface to display the *Deploy EZ Parameter* screen and configure the default parameters.



This image is displayed on all the Deploy EZ screens and can be used to access the Deploy EZ Parameters at any time.

The Deploy EZ Parameters screen appears when you click on the image.



The Parameters screen has two tabs:

- **General Parameters:** The configuration described in this section is performed on this tab.
- **Applications:** This tab is reserved for future use.

General Parameters

The General Parameters screen is used for the following:

- Setting the Default Culture on page 23
- Forcing the Latest Version on page 25
- Use ClickOnce Technology for Deployment on page 26

Setting the Default Culture

The culture setting configures the default language, currency symbols, and date formats on the user interfaces of the following Govern Product Suite applications:

- Govern
- mGovern – Your Mobile Solution
- Govern Scheduler
- Govern New Administration (GNA)

You can launch the Deploy EZ menu to change the culture at any time. You can also change the culture for an application from a Govern Product Suite Options menu, such as, Govern, the Govern Scheduler, or GNA.

To set the default culture for the Govern Product Suite:

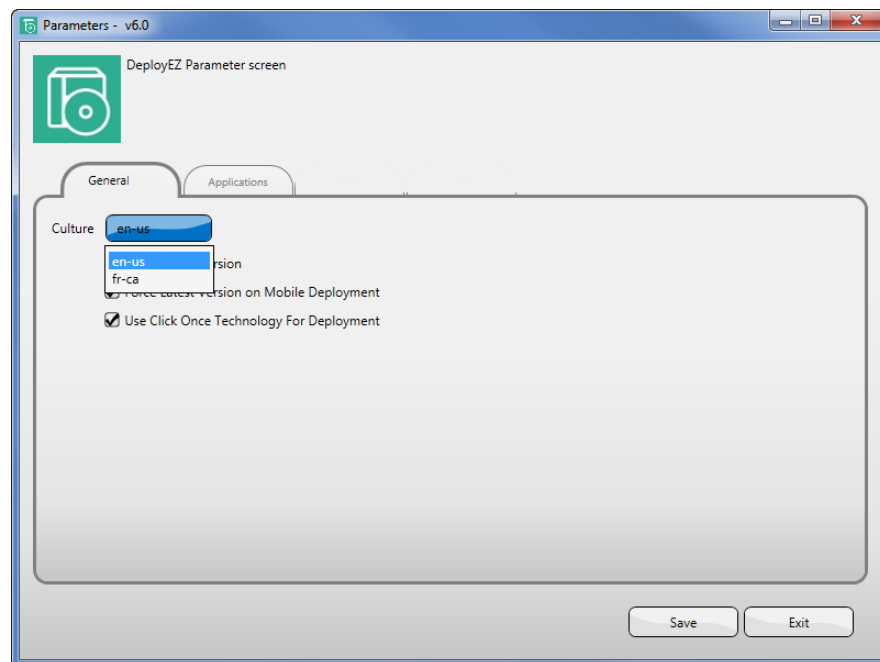
1. Launch the Deploy EZ application.

The *Deployment Directory* screen or the *Main Menu* appears.

2. Click the graphic at the top left of the interface.



The Deploy EZ Parameters screen appears:



3. Select the culture from the **Culture** drop-down list:
 - en-us: American English
 - fr-ca: French Canadian
4. Click **Save**.
5. Click **Exit** to return to the Main Menu. The application closes briefly then reopens automatically.

Forcing the Latest Version

There are two options for forcing the installation of the latest version of the Govern Product Suite applications.

- **Force Latest Version** is used for all applications in the Govern Product Suite, with the exception of Govern Mobile.
- **Force Latest Version on Govern Mobile** is used for the Govern Mobile.

These options are used for updating the Govern Product Suite applications on all computers in the deployment that is running them.

This works as follows: The administrator downloads and installs the latest version of the applications on the server. If **Force Latest Version** is selected, the next time a user launches a Govern application on a client or terminal server, the latest version available is automatically installed.

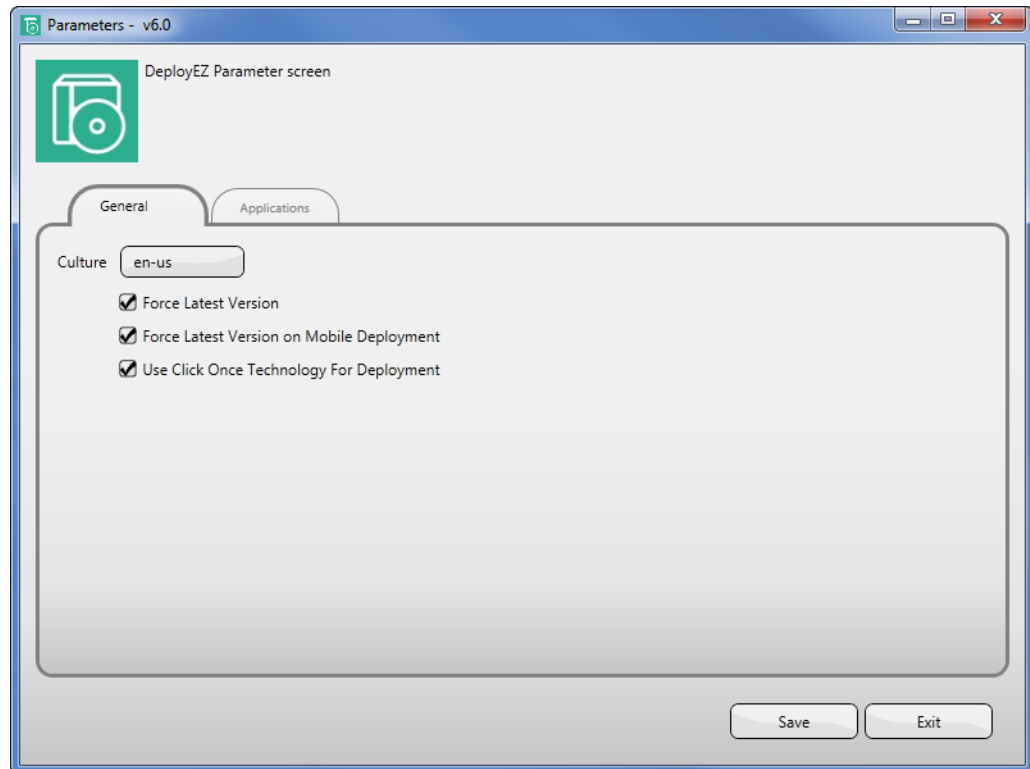
If **Force Latest Version** is deselected, users have the choice to install the latest version or to continue with the version they are currently running. It may be preferable for users who are working on a VPN connection to have this option deselected in order to save time. However, it is recommended to select this option for all users to ensure that everyone is working with the same version of the software.

To force the latest version:

1. Launch the Deploy EZ application.
2. Click the graphic at the top left of the interface.



The Deploy EZ Parameters screen appears:



3. Select **Force Latest Version** for applications in the Govern Product Suite.
4. Select **Force Latest Version on Mobile Deployment** for the Govern Mobile.
5. Click **Save**.
6. Click **Exit** to return to the Main Menu. The application closes but reopens immediately.

Use ClickOnce Technology for Deployment

By default, the **ClickOnce Technology** option is selected. Deselect this option if you are using roaming profiles with terminal servers in your organization.

In the default setup, deployment packages are created when the administrator runs Deploy EZ. These packages contain the Govern applications with the resource files and all the dlls required for running the applications. These packages are saved on a file server.

Govern Deploy EZ

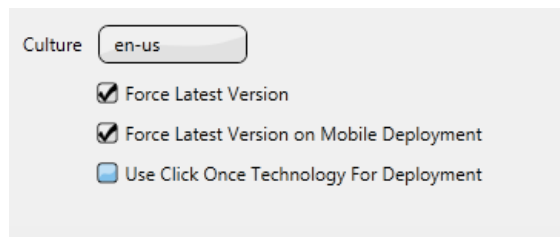
In order to launch a Govern application, a user clicks on a link to the deployment on the file server and the application is copied to the user's computer. The user runs a local version of the application. Updates to new versions of the applications are maintained on the file server, as are rollbacks to previous versions, if they are required.

If you are using terminal servers and roaming profiles, the deployment packages are also saved on a file server. The difference is that the applications are also run on the file server. This setup is described in the following scenario:

Scenario: Organization A, Terminal Servers and Roaming Profiles

In Organization A, five terminal servers are configured. Users have roaming profiles. Each of these servers points a file server. The Govern deployment package is saved on the file server.

When users log on to the network, they are directed to one of the five terminal servers, depending on network traffic, etc. Regardless of the server they are logged onto, users see the same desktop configuration, applications, data and settings. They access the Govern application via this connection and run the application on the server.



Note: If you have this type of setup, it is recommended that users log off when you update to newer versions of the application or when you perform a rollback to an earlier version.

Scenario: Organization B: ClickOnce Technology

In Organization B, when the administrator creates the deployment, the deployment file and links to the applications are copied to a file server. Users have access to the links to the applications that they are authorized to use. In order to install an application, they click on a link and the application is automatically copied and installed on their computers. Updates are installed

from the same link. The update is either automatic or manual, depending on the Force Latest Version option.



Culture

- ☒ Force Latest Version
- ☒ Force Latest Version on Mobile Deployment
- ☒ Use Click Once Technology For Deployment

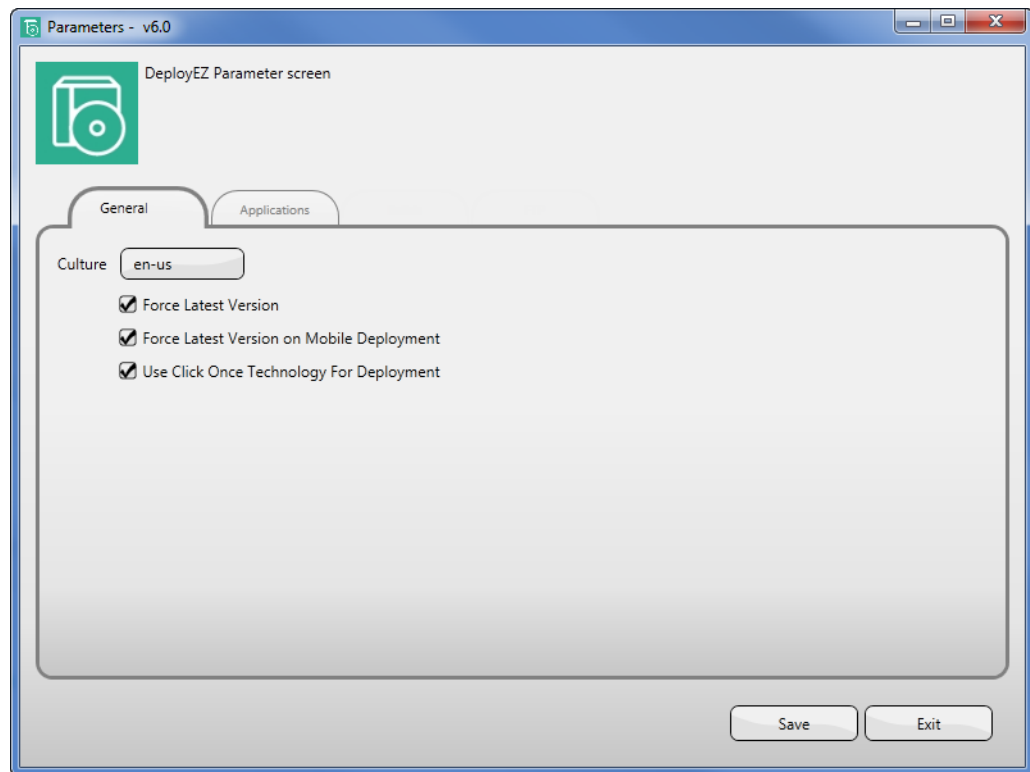
Setting the ClickOnce Technology Option

To set the ClickOnce Technology option:

1. Launch the Deploy EZ application.
2. Click the graphic at the top left of the interface.



The Deploy EZ Parameters screen appears:



3. Do one of the following:

- Deselect the ClickOnce Technology option if you are using Roaming Profiles in a Terminal Server setting.
- Select the ClickOnce Technology option if you are creating a deployment file on a server with links to the applications.

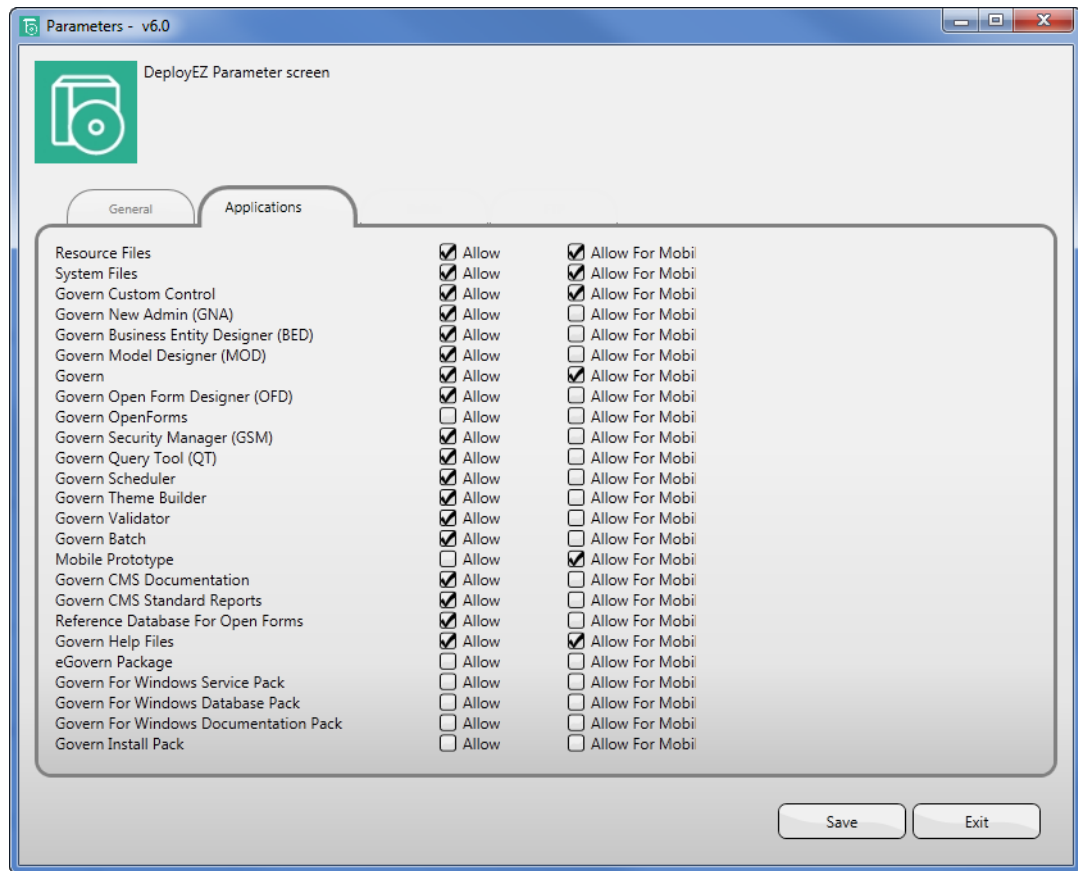
Note: By default, this option is selected.

4. Click **Save**.

5. Click **Exit** to return to the Main Menu. The application closes but reopens immediately.

Applications

The *Applications* screen lists the applications and files that are available for download.



A brief description of each item follows:

- **Resource Files:** The Resource Files contain most of the text that appears on the user interfaces and in the error messages for the Govern applications.
- **System Files:** The System Files are required for running the Govern Product Suite applications. These files are saved in a separate folder in the deployment directory.
- **Govern Custom Control:** The Govern Custom Controls are also required for running the applications. The custom controls are saved in a separate folder in the deployment directory.

- **Govern:** This option is for the Govern version 5.1 and 5.2 of the user application designed for data entry. *Refer to the Govern guide and to the guides for each of the modules, such as Govern Tax, Govern Accounts Receivable, Property Control, and the Govern CAMA guides, for further information.*
- **Govern v6:** This option is for the Govern version 6 user application designed for data entry. *Refer to the Govern guide and to the guides for each of the modules, such as Govern Tax, Govern Accounts Receivable, Property Control, and the Govern CAMA documentation, for further information.*
- **Govern New Administration (GNA):** GNA is the administrative application for the Govern Product Suite. *Refer to the Govern New Administration (GNA) guide and to the administrative section of the Govern Tax guide for further information.*
- **Govern Business Entity Designer (BED):** The BED is the initial application where the connection key for the primary database is set. It is used for defining the business entities and attributes from which the business models are created. *Refer to the Govern Business Entity Designer (BED) guide for further information.*
- **Govern Model Designer (MoD):** The MoD is used for designing the business models from which the user data entry forms are created. *Refer to the Govern Model Designer (MoD) guide for further information.*
- **Govern OpenForms Designer (OFD):** The OFD is a new application that can be used for designing user forms. It is available with the Govern Product Suite, version 6.
- **Govern Security Manager (GSM):** The GSM is used for setting security permissions for the Govern Product Suite applications. *Refer to the Govern Security Manager (GSM) guide for further information.*
- **Govern Query Tool:** The Govern Query Tool is used for building and running queries on the Govern database. It can be used with either Govern for Windows or Govern OpenForms. Search results can be loaded directly to the PC_EXTERNAL table or loaded directly to the tree view in Govern. *Refer to the Govern Query Tool guide for further information.*
- **Govern Scheduler:** The Govern Scheduler is used for monitoring and updating scheduled batch processes. It is a stand-alone application integrated with Govern and GNA. *Refer to the Govern Scheduler guide for further information.*
- **Govern Scheduler Service:** The Govern Scheduler Service is required for running the Govern Batch Scheduler application. *Refer to the Govern Batch Scheduler documentation for details.*
- **Govern WCF Services:** The Govern WCF services are required for installing the web services.

- **Govern Theme Builder:** The Govern Theme Builder is used for designing themes or the background and foreground for the user interfaces in Govern. *Refer to the Govern Theme Builder guide for further information.*
- **Govern Validator:** The Govern Validator can be run after you create a new deployment or when major changes are made. It ensures that the connection keys are valid, that the stored procedures are valid, and that the prerequisites for the applications are correctly installed. *Refer to the Govern Validatory for further information.*
- **Govern Batch:** Govern Batch is required for running some specific batch processes. Usually these are customized for a specific client. The batch process is launched in Govern for Windows batch processing and call Govern OpenForms. These processes are documented in the applicable guides.
- **Mobile Prototype:** This is reserved for future use.
- **Govern CMS Documentation:** This is the documentation for the products.
- **Govern CMS Standard Reports:** This option is used for downloading the
- **Reference Database for OpenForms:** The reference database is downloaded to a folder on the deployment directory where it can be accessed and used to update the Govern applications.
- **eGovern Package:** The eGovern Package is used for an eGovern deployment. *Refer to the eGovern guide for further information.*
- **Govern Installation Pack:** The Govern Installation Pack contains runtime files that are prerequisites for the Govern Product Suite applications, such as Crystal Reports runtime and the Govern Scheduler Service. Not all run times are required for every application in a deployment. They are downloaded to a folder in the deployment directory, where they can be distributed and installed as required.

Exiting the Deploy EZ Parameters Screen

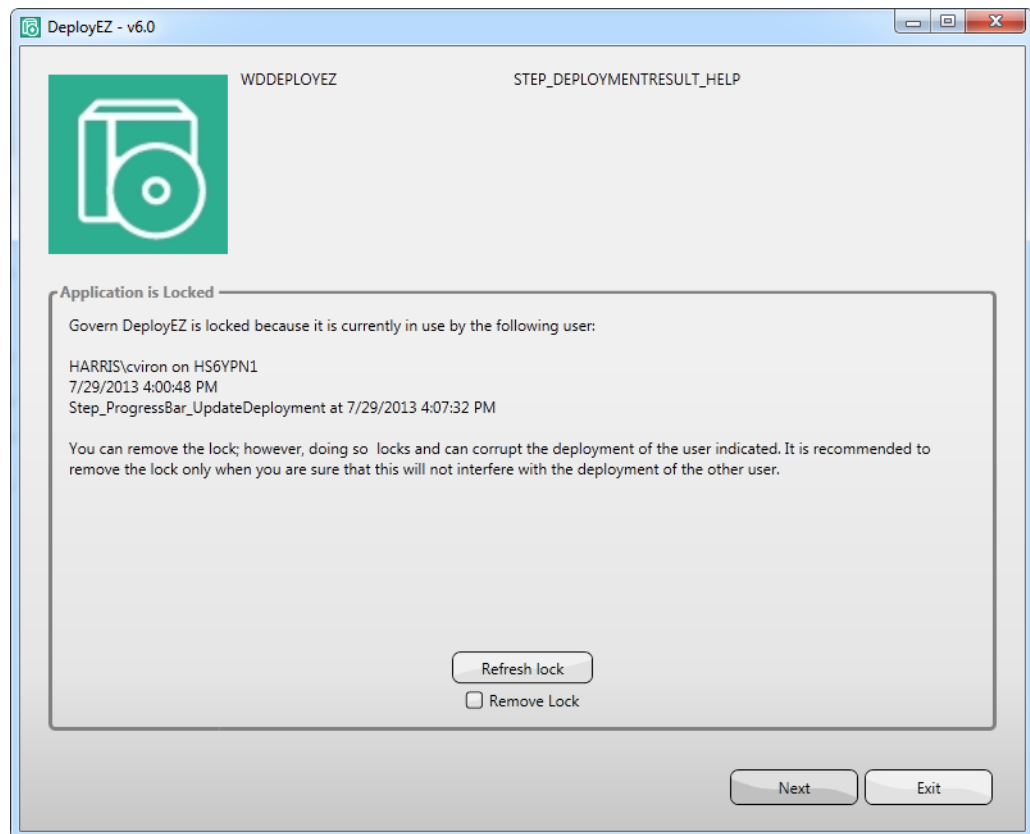
To return to the *Main Menu* or *Deployment Directory* window from the Parameters screen, click the **Exit** button. The Deploy EZ application closes briefly then reopens automatically. When it reopens, the Main Menu is displayed.

About Automatic Locking

Overview

Deploy EZ locks automatically whenever a user or administrator is creating a deployment. This is done to prevent duplication or conflict with a deployment when it is being created.

If you launch Deploy EZ while someone is creating or updating a deployment, a message is displayed on the screen. This is similar to the following screen shot:



The following details are displayed:

- User name of the user or administrator running Deploy EZ
- Date and time that the procedure was started
- Procedure the user is running

To update this information, click **Refresh Lock**.

You can remove the lock; however, doing so can corrupt the deployment of the user indicated. It is recommended to remove the lock only when you are sure that this will not interfere with the deployment of the other user.

Creating a New Deployment

Overview

This section describes the steps required to create a new deployment. These steps include:

- Defining the Deployment Directory. *See page 35.*

Note: The step to define the deployment directory appears only once.

- Downloading the Binary Files. *See page 38.*
- Importing the Binary Files. *See page 40.*
- Creating a Connection Key. *See page 43.*
- Installing the Binary Files. *See page 40.*
- After the Deployment

Other topics in this chapter are:

- Downloading Binaries from an FTP Site on page 52
- Deleting Unused Binaries on page 53
- Creating a Mobile Deployment on page 55

Note: You create a connection key to your deployment during the procedure to create a new deployment.

Defining the Deployment Directory

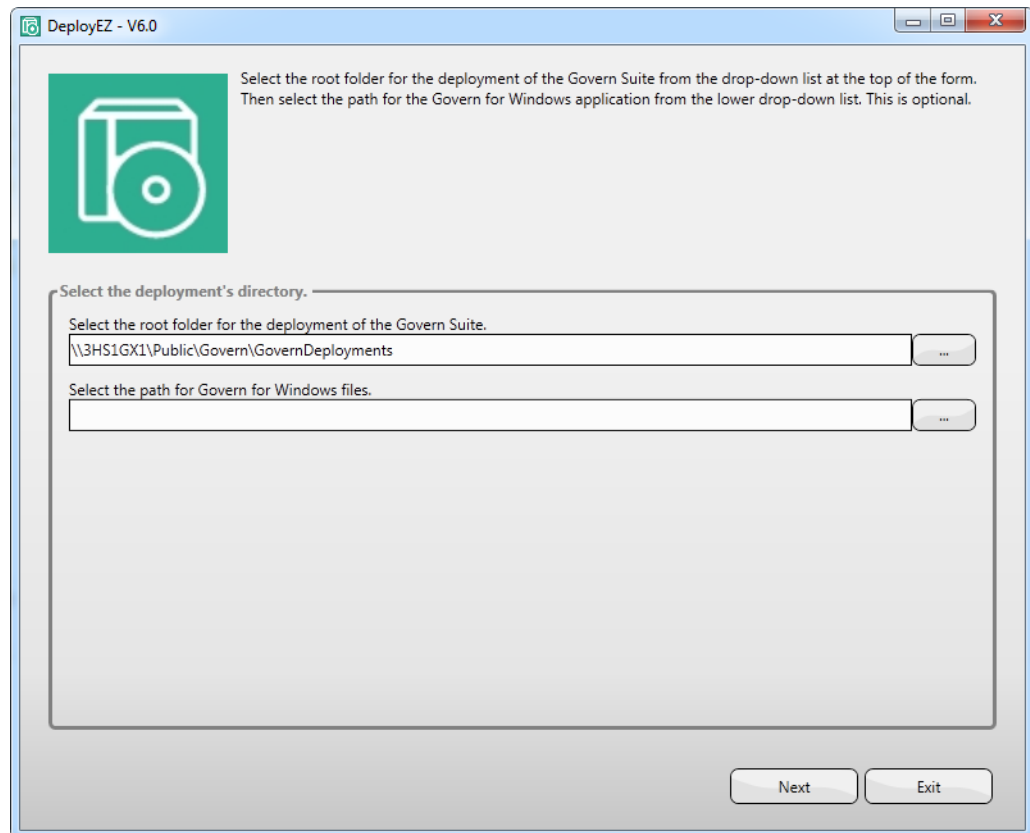
When you create a new deployment, you need to define the deployment directory. The screens that appear in this procedure appear for a new deployment only. Once they are defined, you cannot modify them from Deploy EZ.

Note: If you need to change the deployment directory, follow the procedure under Deleting a Deployment on page 64.

To define the deployment directory for a new deployment:

1. Launch Govern Deploy EZ.

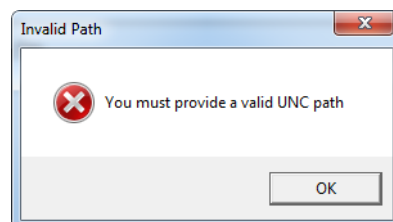
The *Deployment Directory* screen appears.



2. Enter the path for the deployment of the Govern product suite.
Use UNC format when you enter this path or any path in Deploy EZ.

NEW

This is a requirement. If you try to enter a drive letter in a mapped drive, the following error message is displayed.



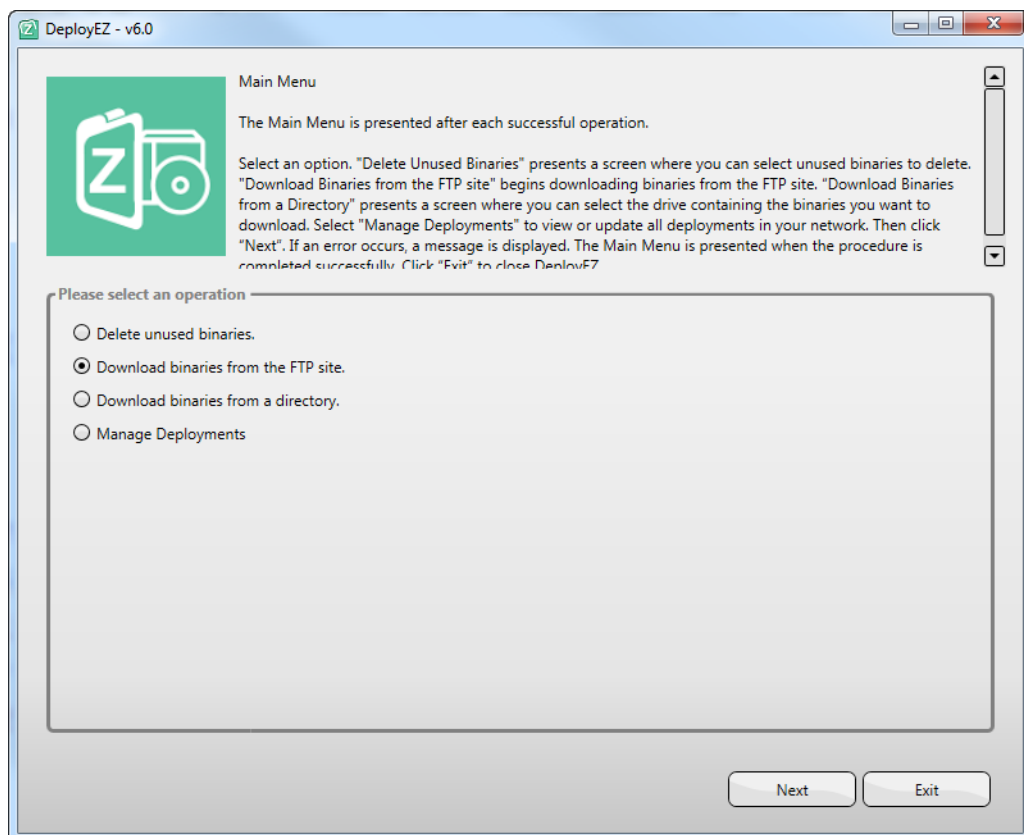
You need to enter the UNC path and click OK in order to continue

3. Leave the path to the Govern for Windows files blank.

Note: This field is reserved for future use.

4. Click **Next**.

The *Main Menu* appears.



5. Select one of the following:

- **Download Binaries from the FTP site** to begin downloading binaries from the FTP site. See *Downloading Binaries from an FTP Site on page 52*.
- **Download Binaries from a Directory** to download binaries from presents a screen where you can select the drive containing the binaries you want to download. See *Downloading the Binary Files on page 38*.
- **Download Custom Package:** See *Downloading a Custom Package on page 53*.

Note: The **Manage Deployments** option is available only after the binary files are downloaded and imported.

6. Click **Next** to continue. Then follow the steps in the required procedure or click **Exit** to close Deploy EZ.

Downloading the Binary Files

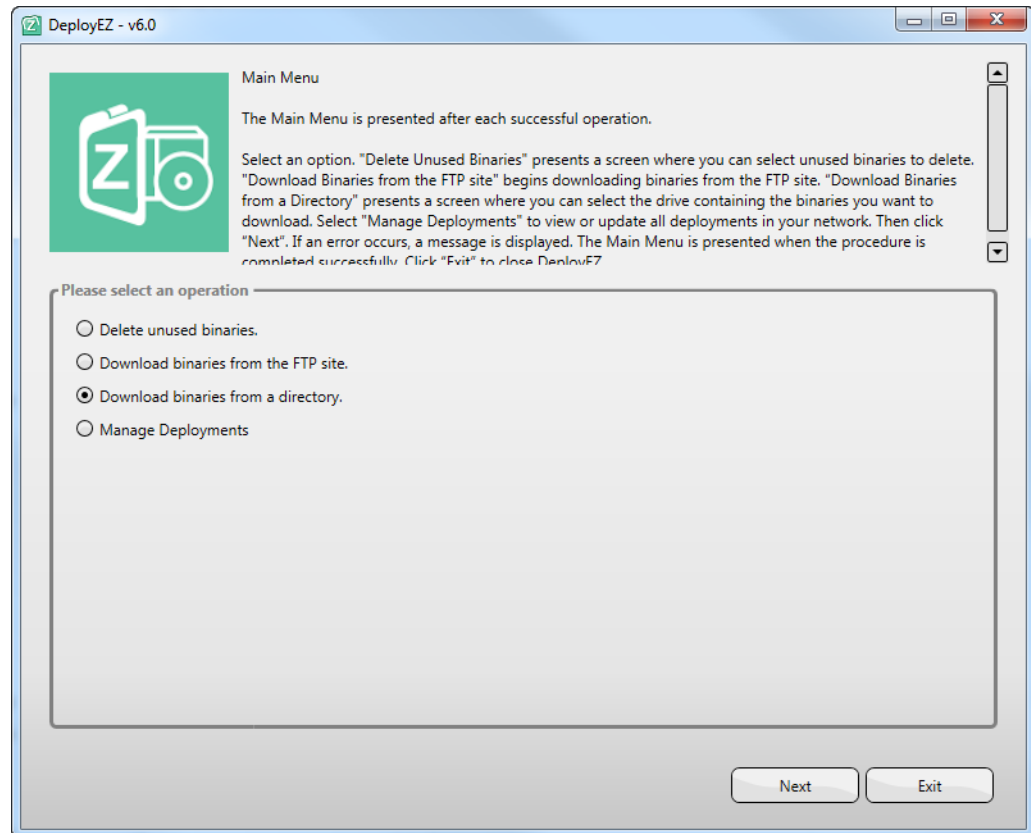
The Binary files contain the executable file and the dlls required for each application in the Govern Product Suite.

The Binary files can be downloaded from a directory, from an ftp site, or from a custom package. See *Downloading Binaries from an FTP Site* on page 52 or *Downloading a Custom Package* on page 53 for details.

Downloading Binaries From a Directory

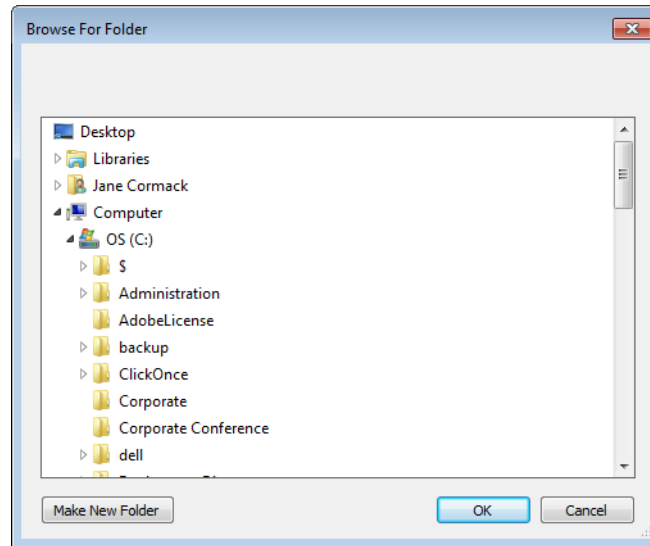
To download files from a directory.

1. Follow the first steps under *Configuring Default Parameters for the Govern Product Suite* on page 20.



2. Select **Download binaries from a directory** on the *Main Menu*.
3. Click **Next**.

The *Browse for Folder* screen appears.



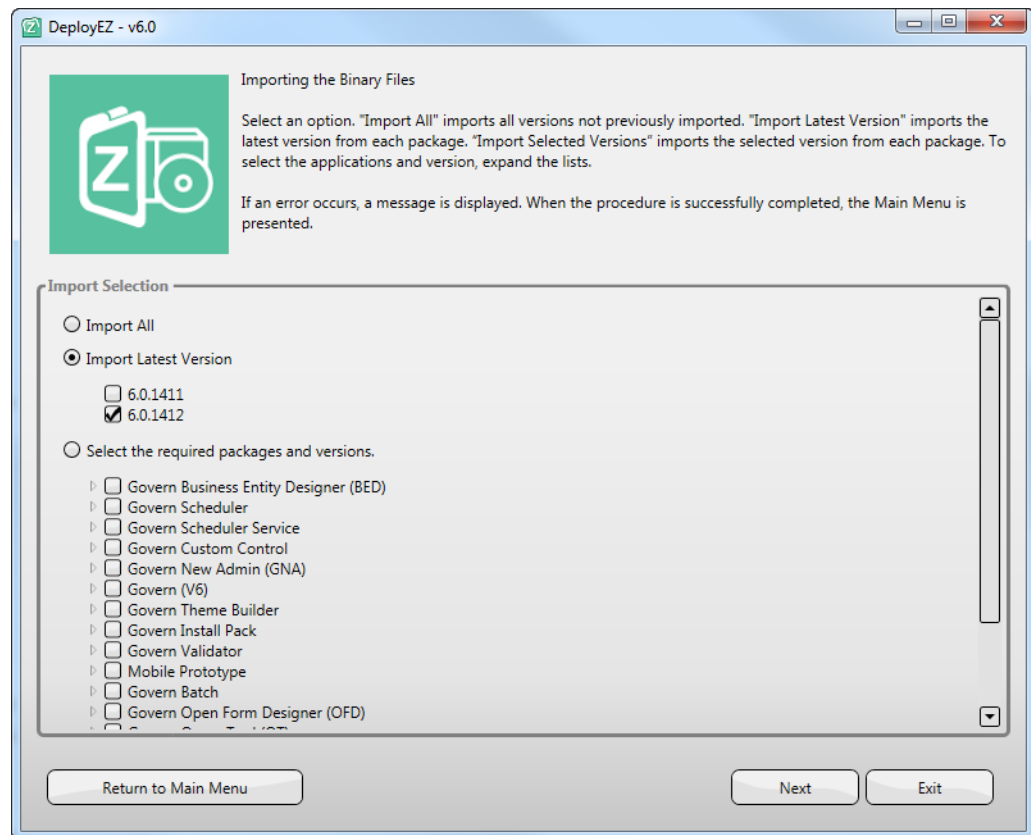
4. Navigate to the folder where the binaries are located and click **OK**.

The Main Menu appears when the Binary Files are downloaded. If you are downloading multiple files and multiple versions this can take several minutes. If the most files are already downloaded and you only need to download an update, this takes only a few seconds.

Once the files are downloaded, you can proceed to the next step, Importing the Binary Files.

Importing the Binary Files

Once the binary files are downloaded, you can import them. The Importing the Binary Files screen is displayed automatically when the download is complete.

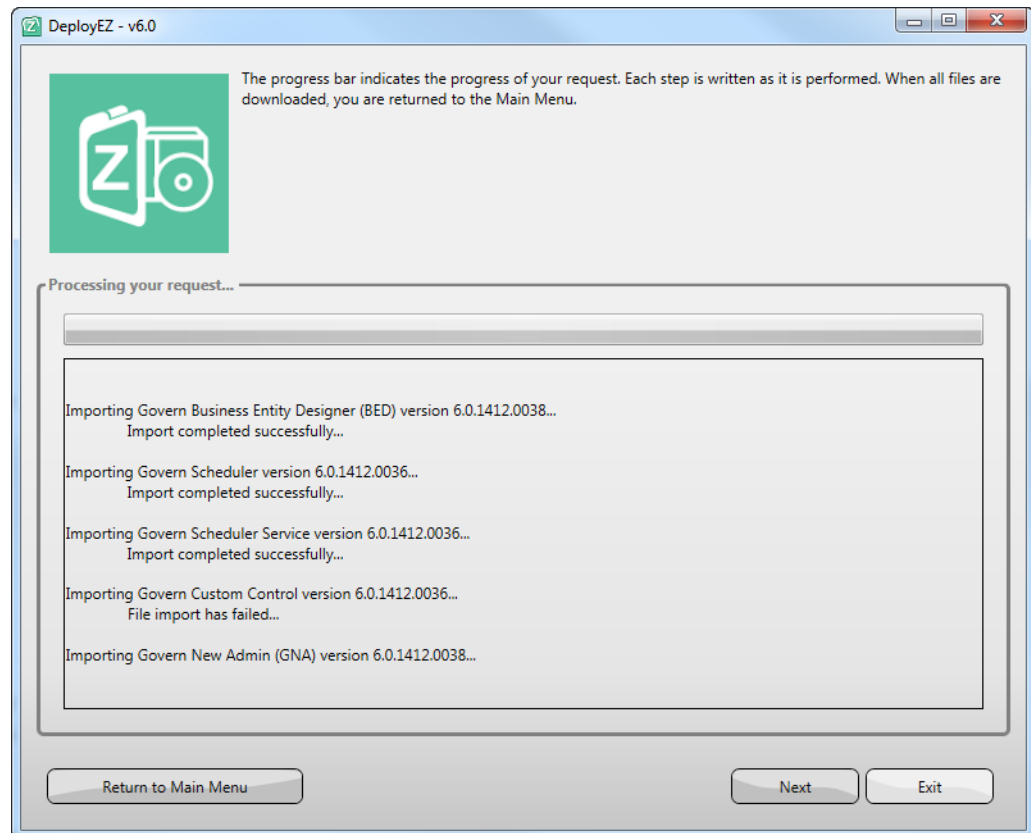


To import the binary files:

1. Select one of the following on the *Import the Binary Files* screen:
 - **Import All:** to import all versions not previously imported.
 - **Import Latest Version:** to import the latest version from each package.
The available versions are listed.
 - **Import Selected Versions:** to import selected version and selected packages. For this option, you can expand the lists to select the required version or versions from each package.

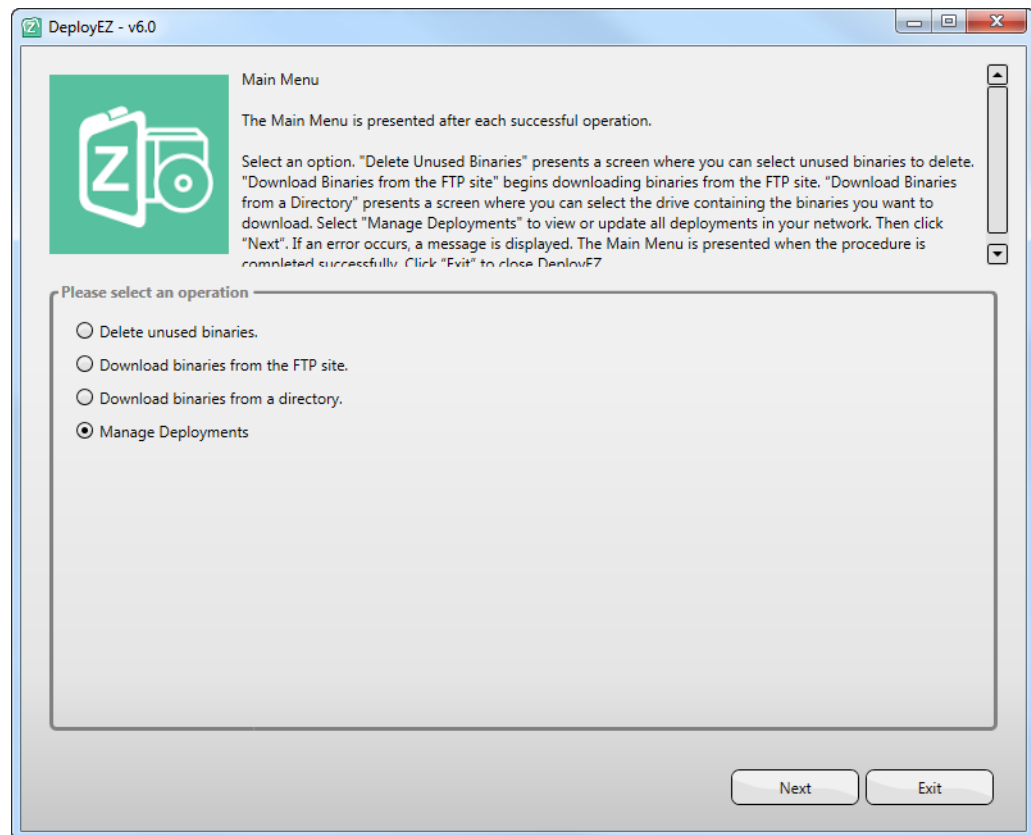
Note: For a new deployment, the Resource Files, Custom Control, and System Files are required. If you try to import files

2. Click **Next**.



A progress bar appears to indicate the progress of the download. If an error occurs, a message is displayed on the screen.

When all the files are imported the Main Menu appears.



3. Select **Manage Deployments** and click **Next**.

For a new deployment, this option is available when all the selected binary files are downloaded and imported.

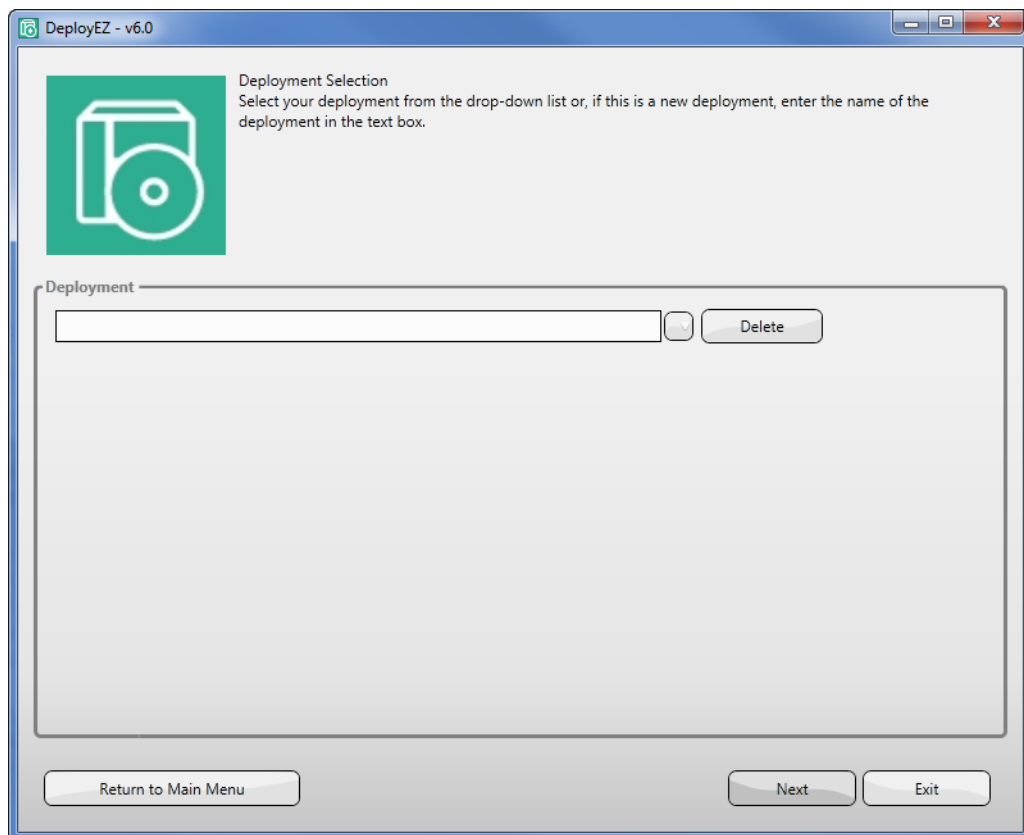
The next step is to create the connection key.

Creating a Connection Key

This step appears for a new deployment only. If you want to change the connection key, you need to change the deployment directory as well. *Follow the procedure under Deleting a Deployment on page 64.*

To create a Connection Key:

1. Launch Govern Deploy EZ.
The *Main Menu* appears.
2. Click **Manage Deployments**.



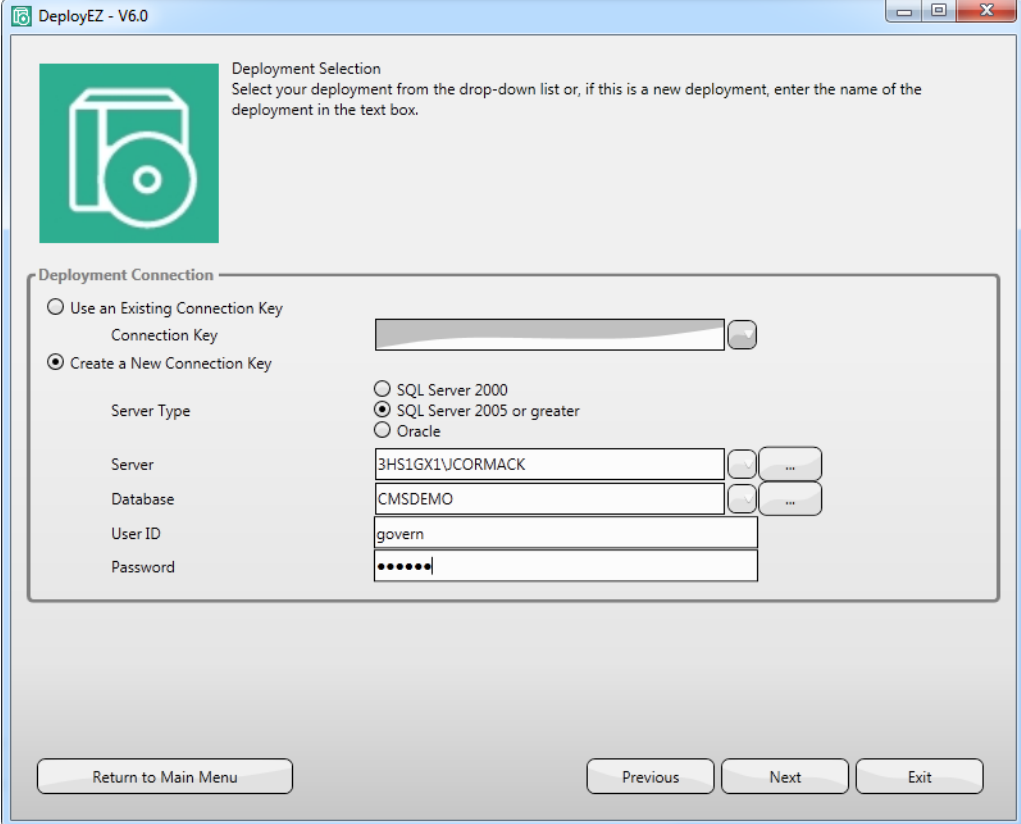
3. Enter the name of the deployment in the **Deployment** text box.

When creating a deployment name, use the following format:

DATABASENAME_SERVERNAME_SERVERTYPE
for example, GOVERNDATABSE_GOVERNSERVER_SQL
Use all uppercase characters for the deployment name.

4. Click **Next**.

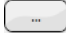
The *Deployment Connection* screen appears.

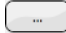


5. Select **Create a New Connection Key**.

6. Select the **Server Type**.

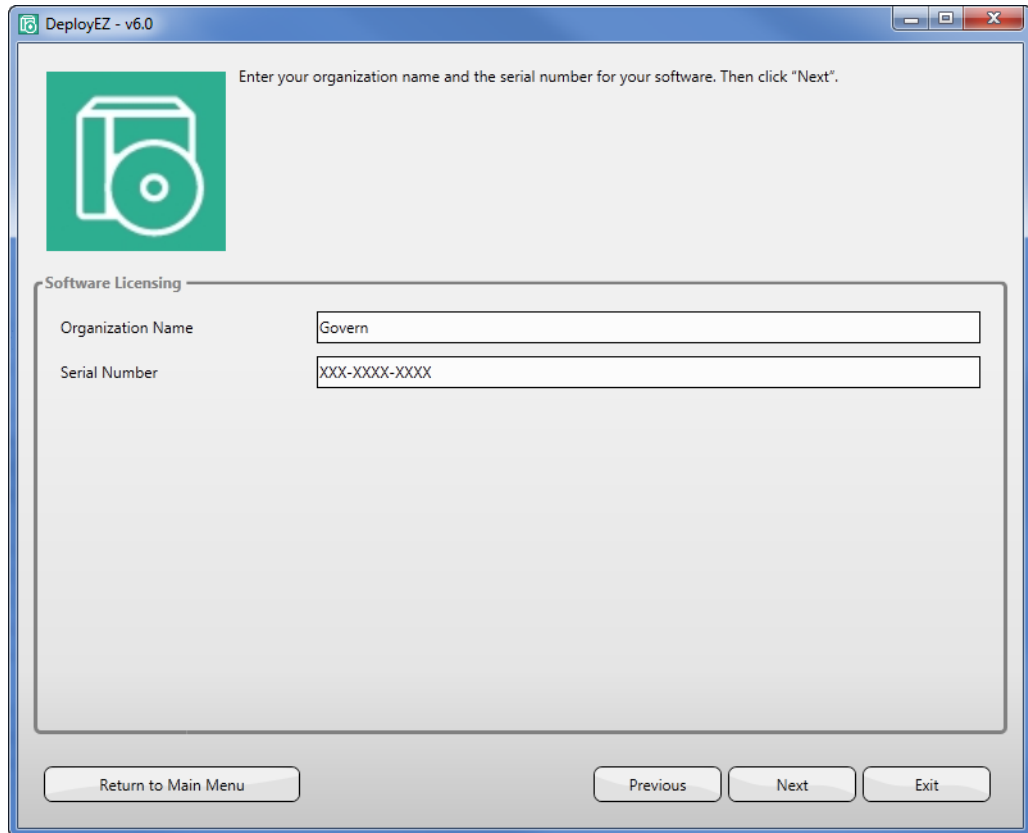
The following server types are supported: SQL Server 2000, SQL Server 2005 or greater, and Oracle.

7. Enter the server name or click the ellipsis button  and browse for a server.

8. Enter the database name or click the ellipsis button  and browse for a database.

9. Click **Next**.

The *Software License* screen appears.



DeployEZ - v6.0

Enter your organization name and the serial number for your software. Then click "Next".

Software Licensing

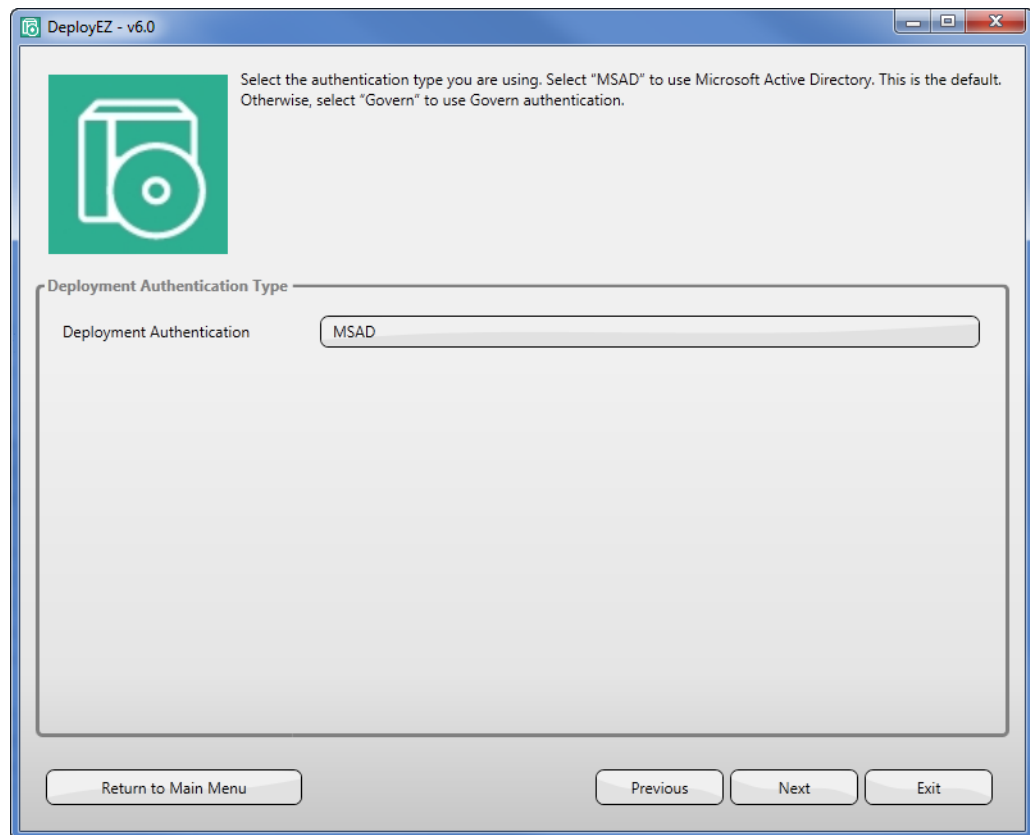
Organization Name:

Serial Number:

Return to Main Menu Previous Next Exit

10. Enter your organization name and the serial number of the software and click **Next**.

The *Authentication Type* screen appears.

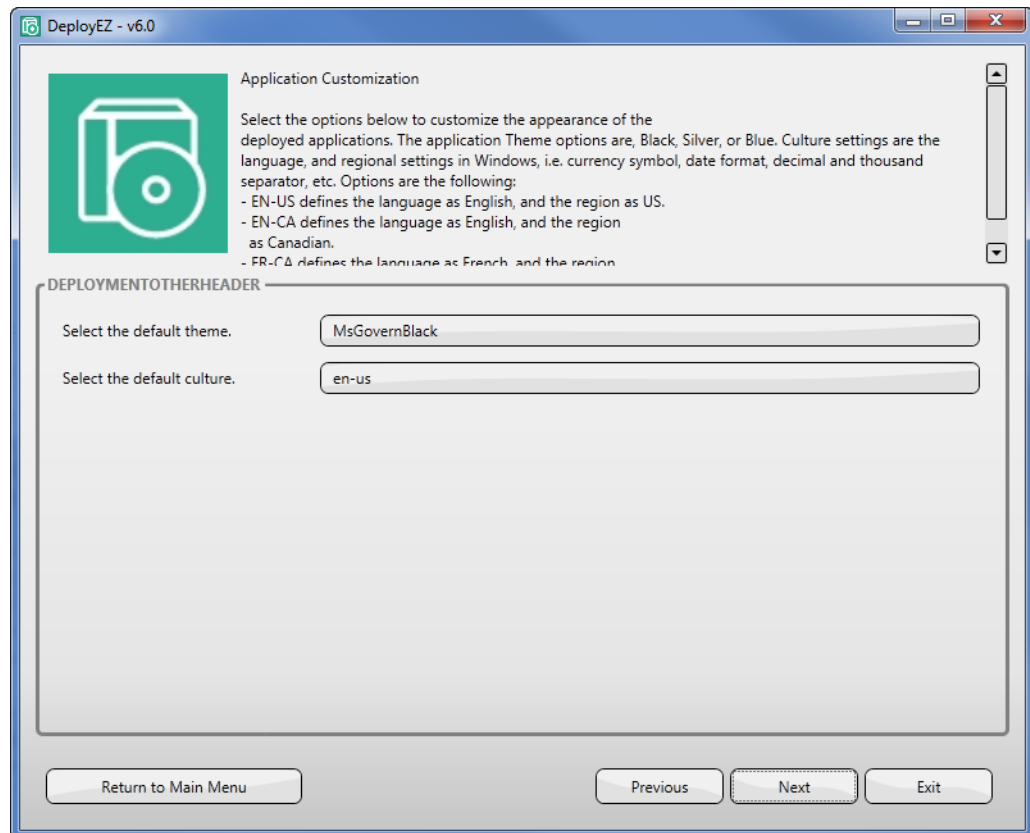


11. Select one of the following options:

- **Govern:** Select **Govern** to authenticate the user with the Govern user table (Table: USR_USERFILE).
With Govern authentication, a user name and password are required for logging in to the applications.
- **MSAD:** Select MSAD to authenticate the user with Microsoft Active Directory. This is the default.

12. Click **Next**.

The *Application Customization* screen appears.



13. Select one of the following options as the theme for the Govern applications that you are installing. The theme specifies the background and foreground colors of the user interfaces:

- MsGovernBlack
- MsGovernBlue
- MsGovernSilver

Note: In Govern OpenForms, version 6 and above, this step is no longer applicable. The themes are based on the Microsoft Windows version.

14. Select the culture from the **Culture** drop-down list:

- en-ca: Canadian English
- en-us: American English
- fr-ca: French Canadian

The culture settings govern the default language of the user interfaces, currency symbols, and date formats.

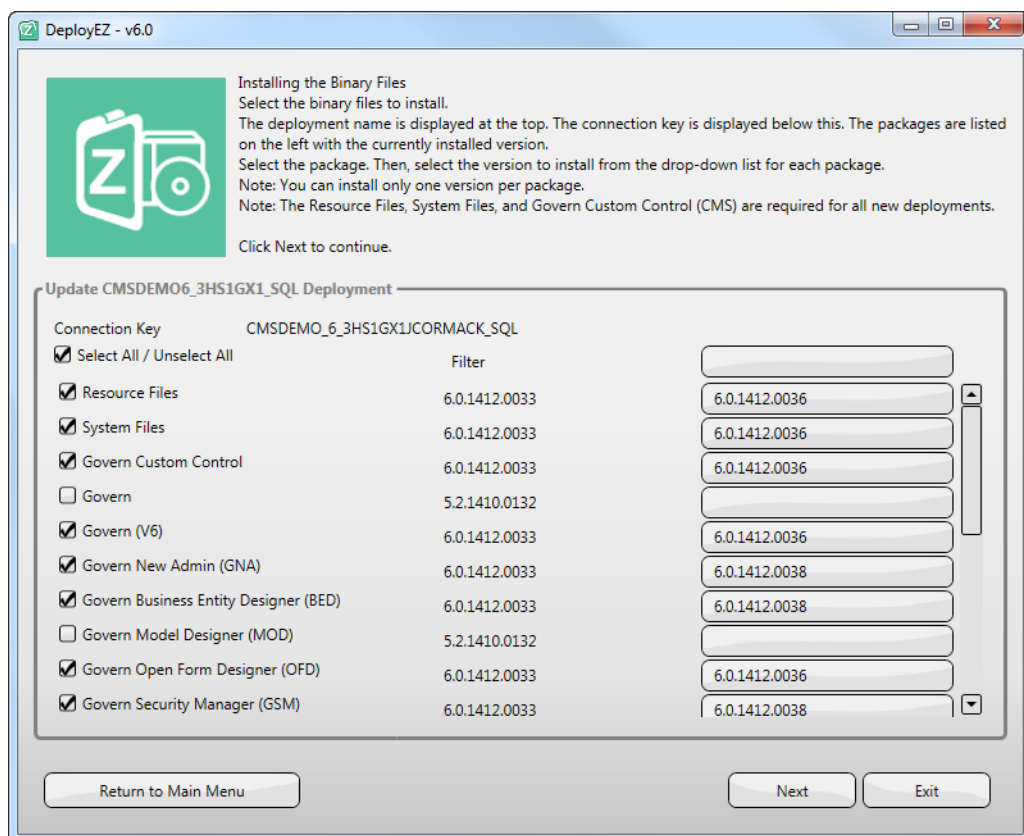
15. Click **Next**.

16. Follow the procedure under Installing the Binary Files on page 49.

Installing the Binary Files

The *Installing the Binary Files* appears automatically, after you have performed the following procedures:

- Downloading the Binary Files
- Creating or Entering the Connection Key



The name of the deployment you are updating is displayed at the top. The connection key is displayed below the deployment name.

All the packages containing the binary files are listed on the left. The packages that you downloaded are enabled.

To install the binary files:

1. Select the packages you want to install on the *Installing the Binary Files* screen.

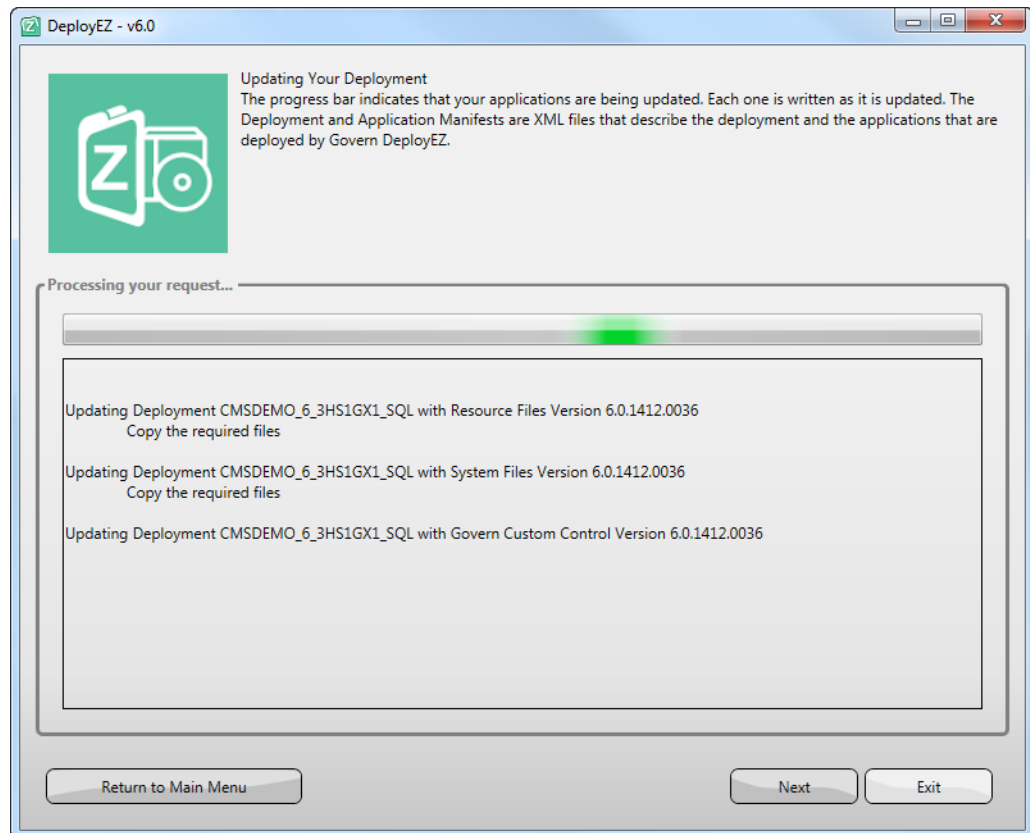
Note: Resource Files, System Files, and the Govern Custom Control (CMS) are required for all new deployments.

2. Select the version you want to install

Note: You can install and run only one version per package.

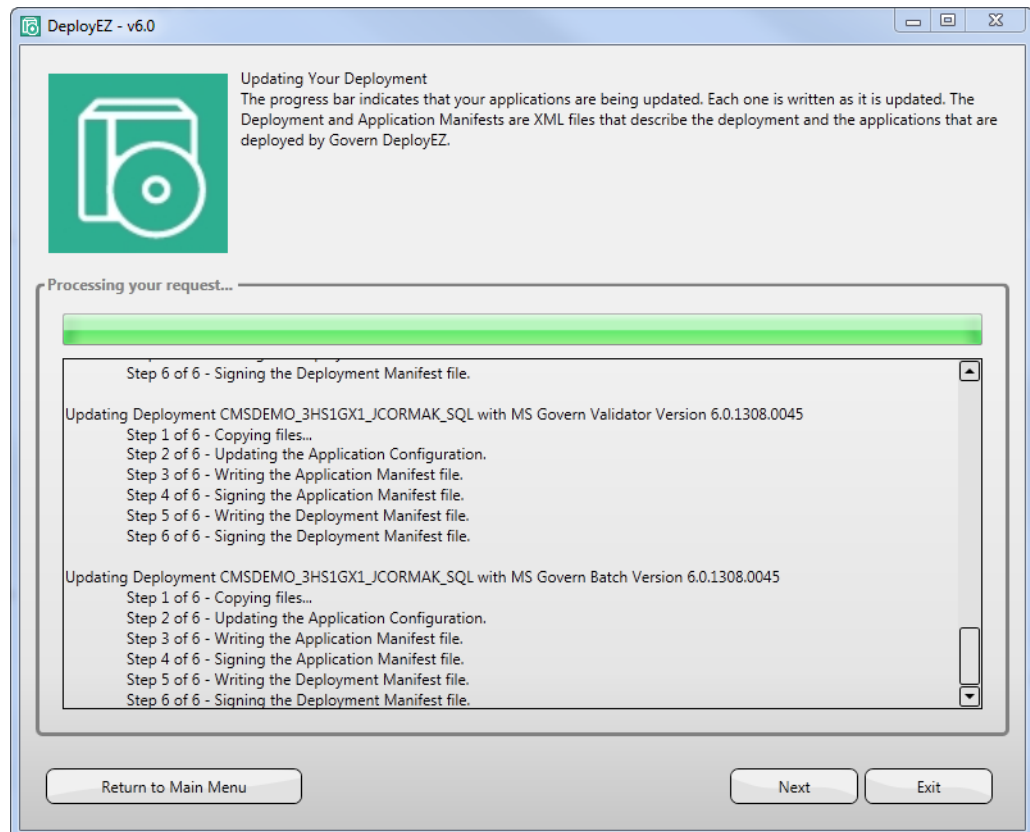
3. Click **Next**.

A progress bar appears indicating the progress of the installation.

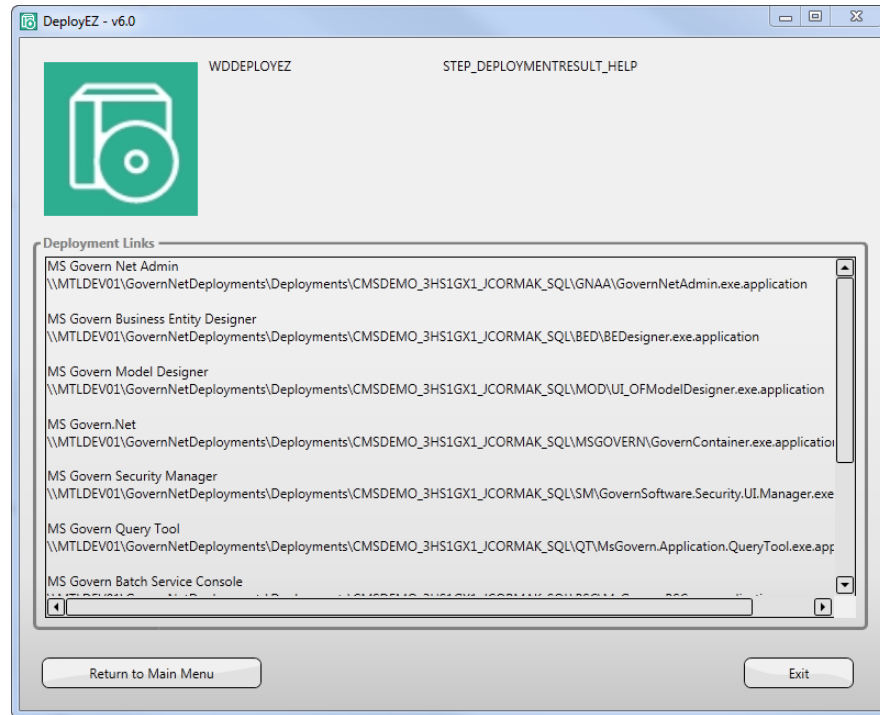


You can click **Exit** or **Return to Main Menu** when the progress bar is running and before the installation is complete.

Otherwise, the progress bar appears indicating the progress of the installation.



4. Click **Next** when the button becomes enabled.



The application installation files are downloaded to the Deployment Directory and the shortcuts are downloaded to the Shortcut folder.

For further details, see [About the Directory Structure Created on page 15](#).

5. Click **Exit** to close the program or **Return to Main Menu** when the deployment links are displayed.

Downloading Binaries from an FTP Site

You are automatically connected to the ftp site when you select this option. You can select the packages and versions that you want to download.

The procedures for creating or updating a deployment from binaries downloaded from an FTP site are similar to those for downloading the binaries from a directory. Follow the procedure described under *Downloading the Binary Files on page 38*.

Downloading a Custom Package

You can download files from a custom package. With this option, the entire package is downloaded. You can then install the files as you would for files downloaded from an FTP site or directory. This option will be available in a future release.

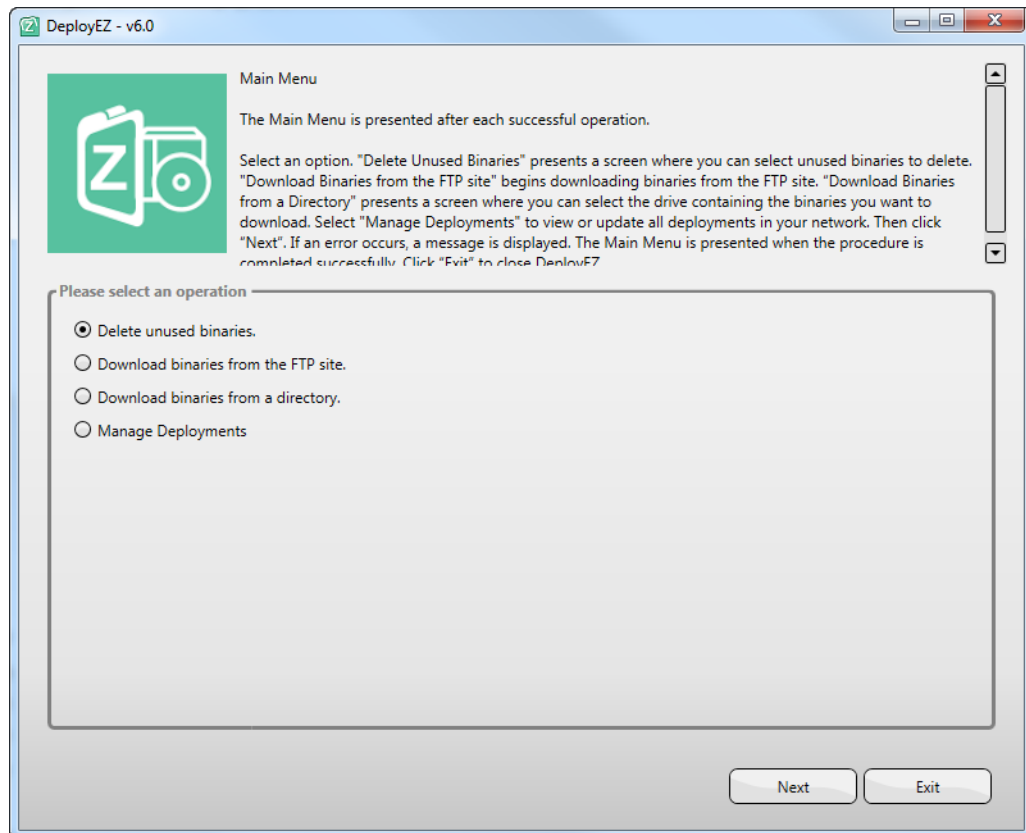
Deleting Unused Binaries

The option to delete unused binaries deletes the binary files that were downloaded to your system but not used.

This option is available only after binary files have been downloaded.

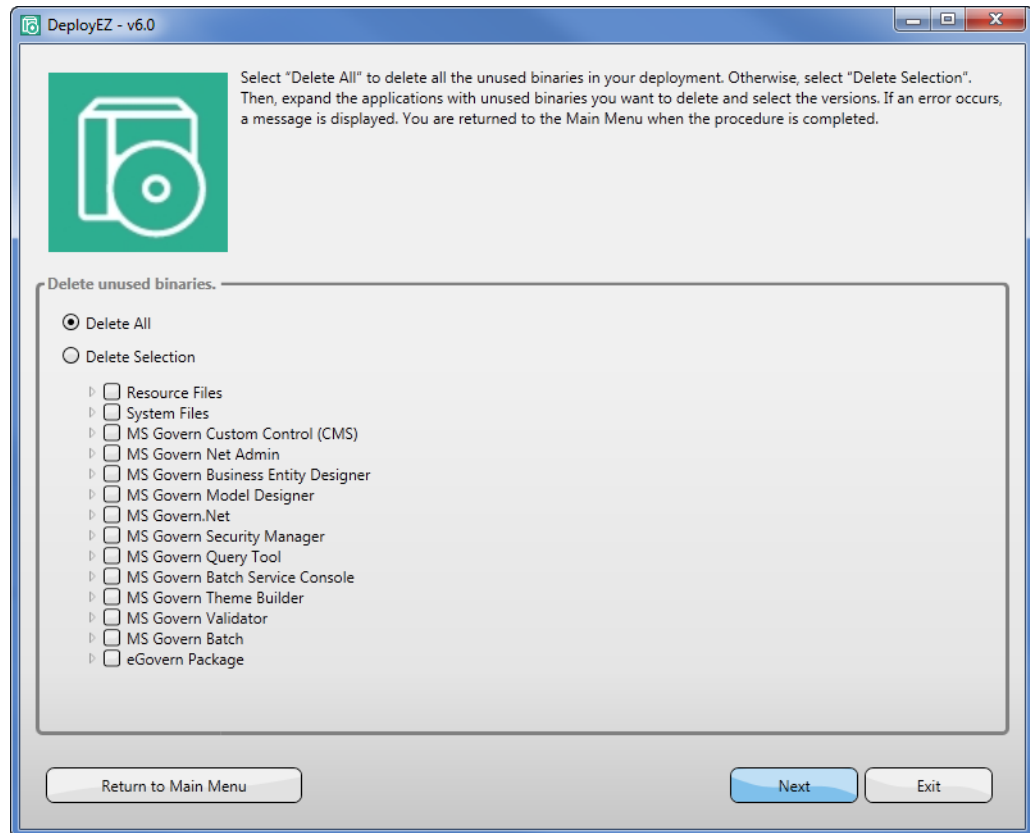
To delete unused binaries:

1. Launch Deploy EZ.
The *Main Menu* appears.



2. Select **Delete Unused Binaries** and click **Next**.

The *Delete Binaries* screen appears.



3. Select one of the following:
 - Select **Delete All** to delete all the unused binaries on your system.
 - Select **Delete Selection** and select the files that you want to delete.
4. Click **Next**.

A Progress bar is displayed to indicate the progress of the deletion.

When the deletion procedure is complete, the Main Menu is displayed.

Creating a Mobile Deployment

The procedure for creating a mobile deployment is described in the *Govern Mobile* guide.

Steps to Follow When the Deployment is Complete

Perform the following steps when the new deployment is complete, but before making the applications available to the users.

1. Update the organization name in GNA.

To perform this step, launch GNA and open the General Installation Parameters form. *Refer to the Govern New Administration guide for details.*

2. Run the Govern Validator.

This application verifies that all prerequisites are correctly installed. It verifies the Resource Files. It confirms that the connection keys in the deployment are valid. It verifies the connection speed and the LAN speed. *Refer to the Govern Validator guide for further details.*

3. Run a Database Verification.

This step verifies that the stored procedures are valid, it verifies the database tables and ensures that there are no errors in the database structure. It rebuilds the user and system validation tables and verifies the table indexes. *Refer to the Govern New Administrator (GNA) guide for further details.*

4. Launch the Govern Scheduler and restart the Scheduler Service.

The Scheduler Service automatically checks for new batch process and updates to existing ones at startup. It automatically updates the Govern Scheduler application. *Refer to the Govern Scheduler guide for further details.*

Updating a Deployment

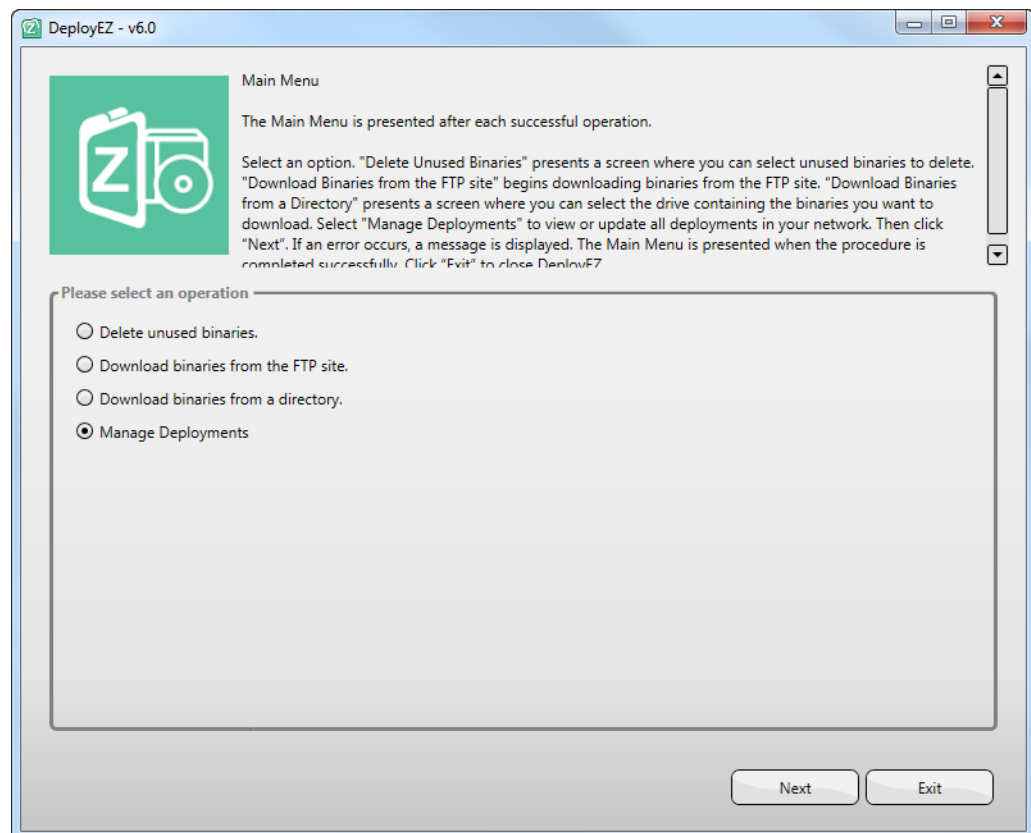
Overview

The steps to update a deployment are similar to the steps for downloading and installing the binary files when creating a new deployment. The difference is that the steps for defining the deployment directory and creating a connection key are not displayed.

To update a deployment:

1. Launch Deploy EZ.

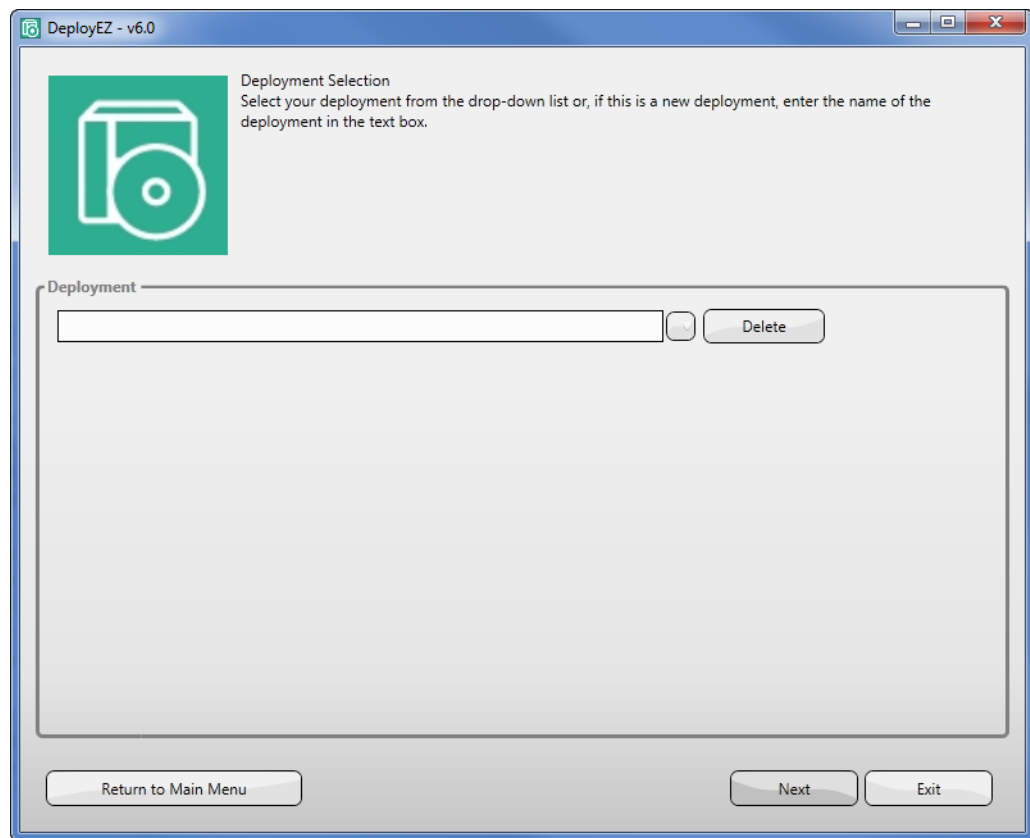
The Main Menu appears.



2. Select one of the options to download files and follow the procedure described under:
 - Downloading the Binary Files on page 38

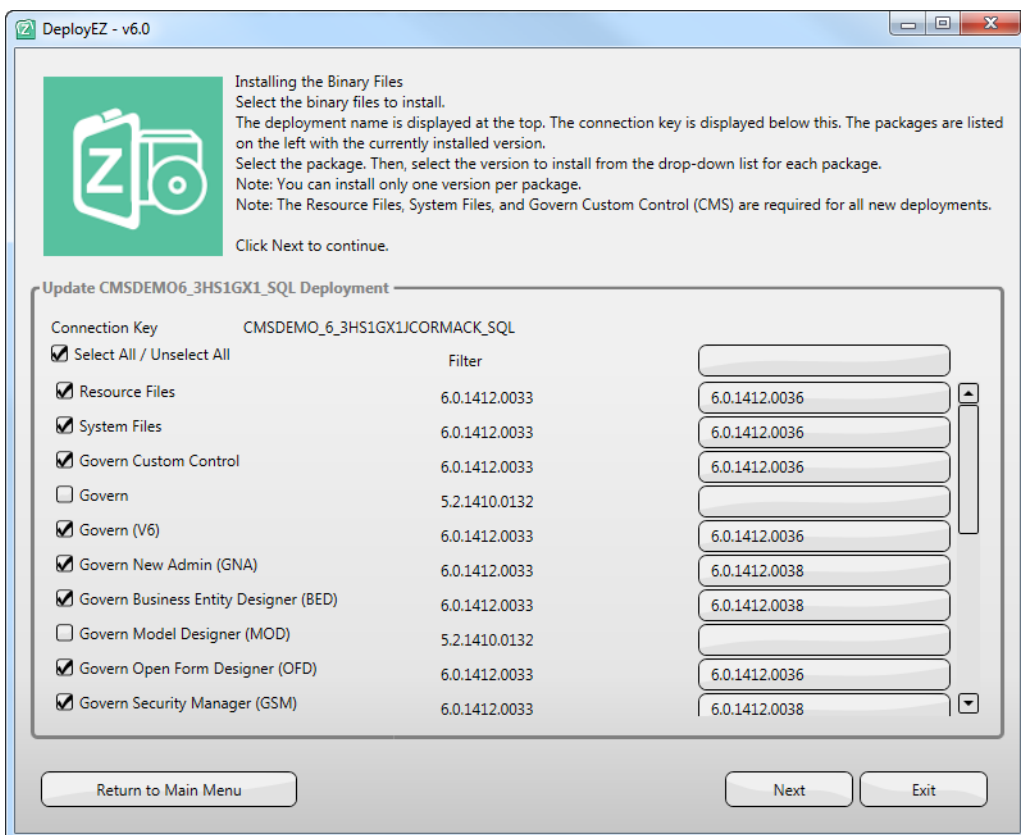
- Downloading Binaries from an FTP Site on page 52
 - Downloading a Custom Package on page 53
3. Select **Manage Deployments** and click **Next**.

The *Deployment Selection* screen appears.



4. Select the deployment you are updating from the dropdown list and click **Next**.

The *Importing the Binary Files* screen appears.



The name of the deployment you are updating is displayed at the top. The connection key is displayed below the deployment name.

All the packages containing the binary files are listed on the left. The packages that you downloaded and imported are enabled.

Note: You can download and import multiple versions of an application or package, but you can install only one version at a time.

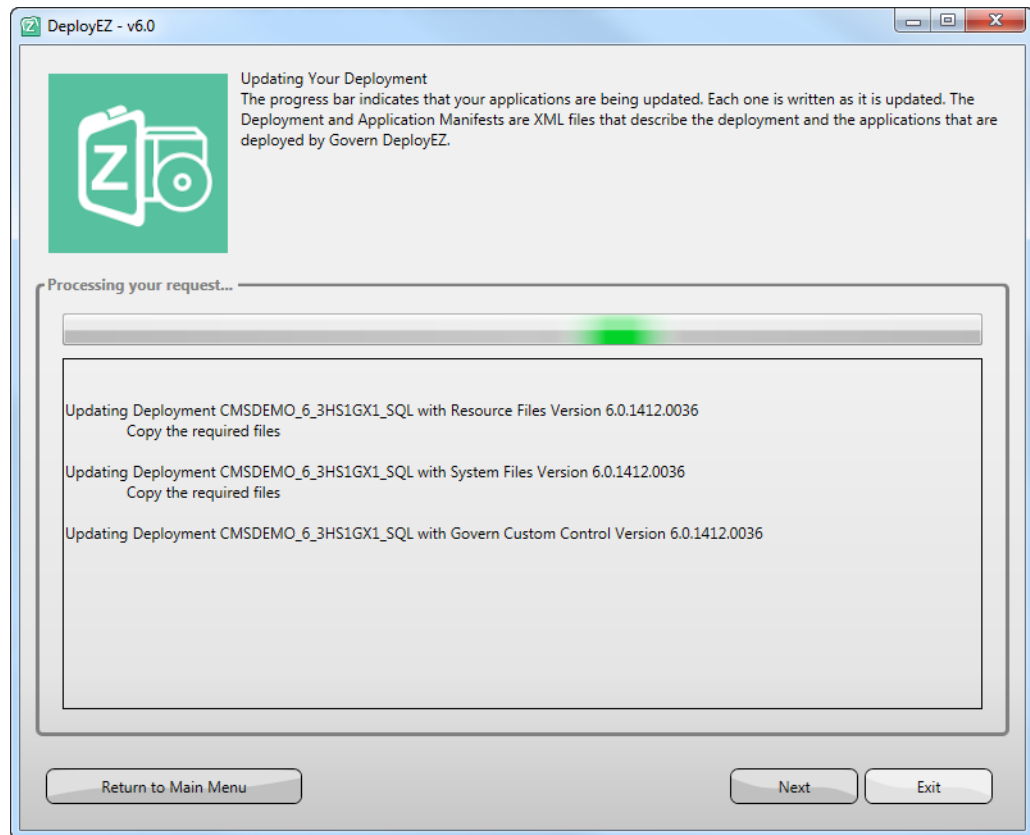
5. Select the packages you want to install.

Note: Resource Files, System Files, and the Govern Custom Control (CMS) are required for all new deployments

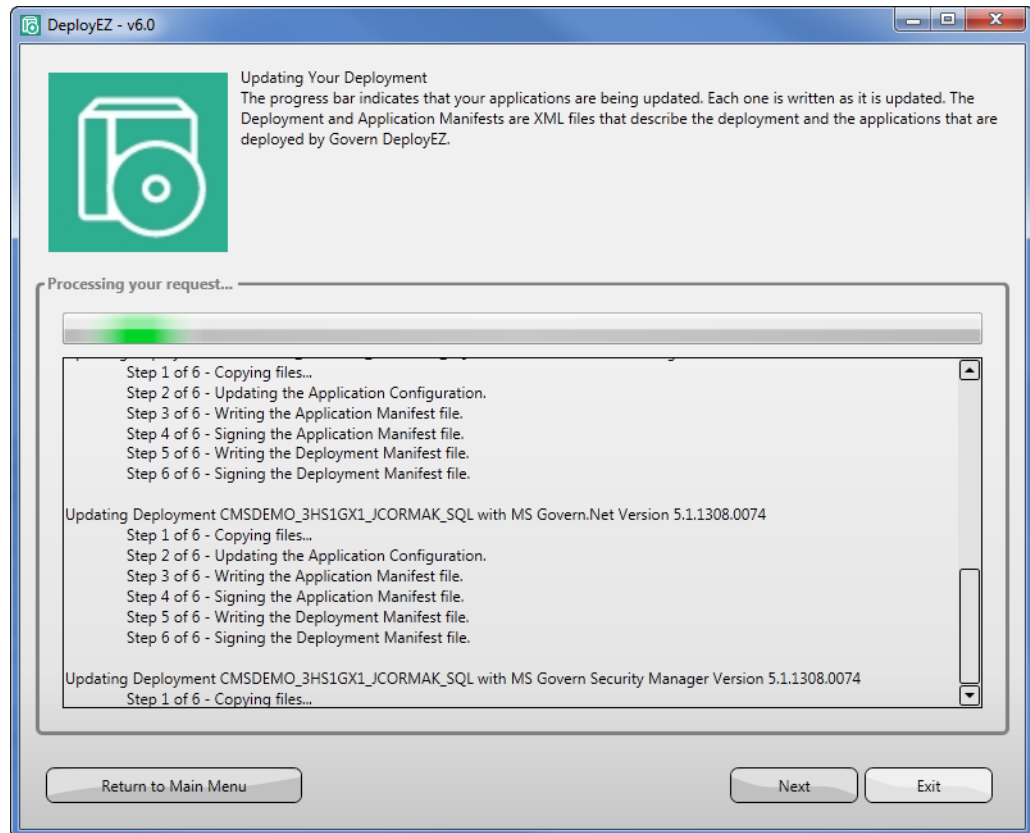
6. Select the version you want to install

Note: You can install and run only one version per package.

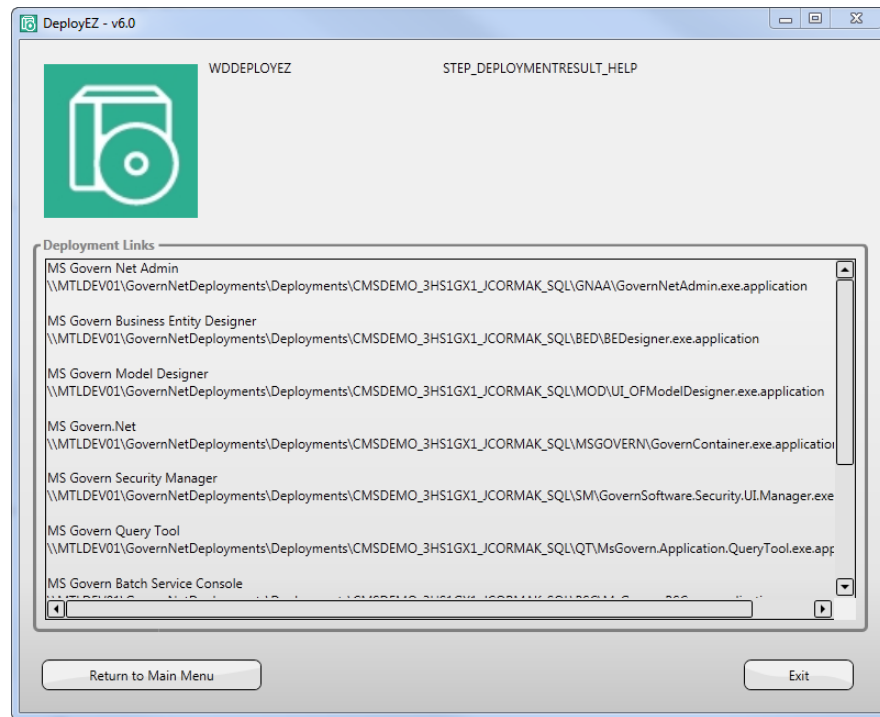
7. Click **Next**.



A progress bar appears indicating the progress of the installation.



8. Click **Next** when the button becomes enabled.



The application installation files are downloaded to the Deployment Directory and the shortcuts are downloaded to the Shortcut folder.

For further details, see [About the Directory Structure Created on page 15](#).

9. Click **Exit** to close the program or **Return to Main Menu** when the deployment links are displayed.

Steps to Follow When the Update is Complete

Perform the following steps when the new deployment is complete, but before making the applications available to the users.

1. Run a Database Verification.

This step verifies that the stored procedures are valid, it verifies the database tables and ensures that there are no errors in the database structure. It rebuilds the user and system validation table and verifies the table indexes. *Refer to the [Govern New Administrator \(GNA\) guide for further details](#).*

2. Launch the Govern Scheduler and restart the Scheduler Service.

Govern Deploy EZ

Note: Ensure that no one is running a scheduled batch process when you perform this step.
















The Scheduler Service automatically checks for new batch process and updates the existing ones at startup. It automatically updates the Govern Scheduler application. *Refer to the Govern Scheduler guide for further details.*

Deleting a Deployment

Overview

You can delete any deployment directly from the Deploy EZ interface.

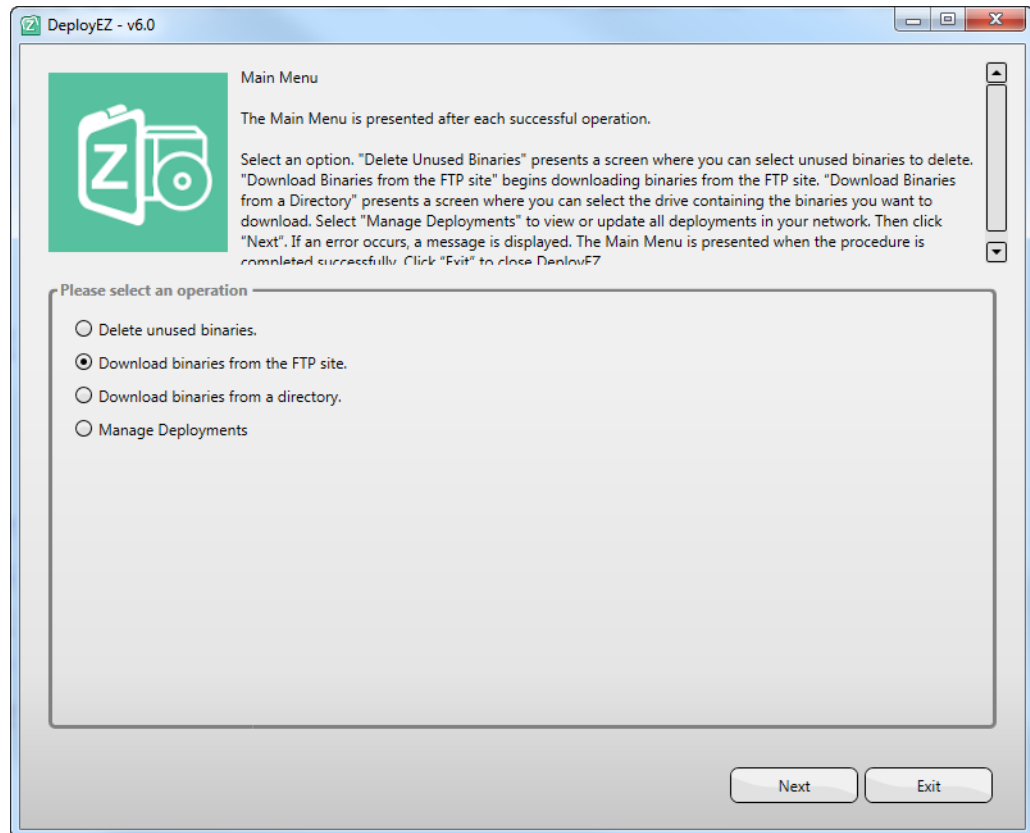
This procedure deletes the deployment folder and shortcuts from the deployment server. This directory is shown in the following screen shot.

| Name ^ | Date modified | Type | Size | |
|---|--------------------|--------------|------|--|
|  BED | 5/23/2014 8:56 AM | File folder | | |
|  BSC | 5/23/2014 8:58 AM | File folder | | |
|  CustomControl | 5/23/2014 8:54 AM | File folder | | |
|  GNAA | 5/23/2014 8:55 AM | File folder | | |
|  Govern | 5/23/2014 8:55 AM | File folder | | |
|  GTB | 5/23/2014 8:59 AM | File folder | | |
|  MGv | 5/23/2014 9:00 AM | File folder | | |
|  MOD | 5/23/2014 8:56 AM | File folder | | |
|  MSGGOVBATCH | 5/23/2014 9:01 AM | File folder | | |
|  MSGGOVERN | 5/23/2014 8:54 AM | File folder | | |
|  OFD | 5/23/2014 8:56 AM | File folder | | |
|  QT | 5/23/2014 8:58 AM | File folder | | |
|  SM | 5/23/2014 8:57 AM | File folder | | |
|  SystemFiles | 5/23/2014 8:53 AM | File folder | | |
|  GovernNetConfig.xml | 5/23/2014 10:21 AM | XML Document | 4 KB | |

It does not uninstall the applications from the computers where they are installed or delete the connection key. *For details about uninstalling a complete deployment, see Completely Uninstalling a Deploy EZ Deployment on page 72.*

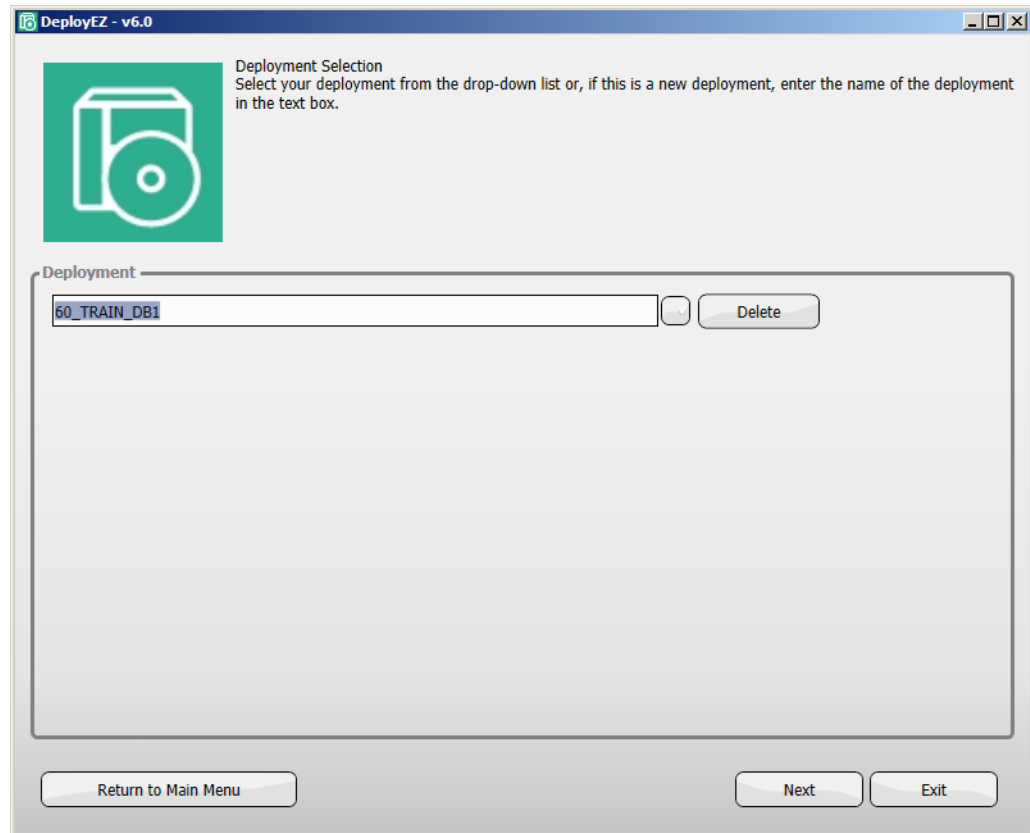
To delete the deployment from the deployment directory:


1. Launch Deploy EZ.



2. Select **Manage Deployments**.
3. Click **Next**.

The *Deployment Selection* screen appears.



The **Delete** button appears when you select the deployment using the arrow on your computer or by entering the first letters in the Deployment text box. It does not appear if you select the button  beside the Deployment text box.

4. Click the **Delete** button next to the **Deployment** text box.

Note: There is no confirmation message or warning when you click **Delete**.

Chapter 3: Installing and Maintaining Deployments for End-Users



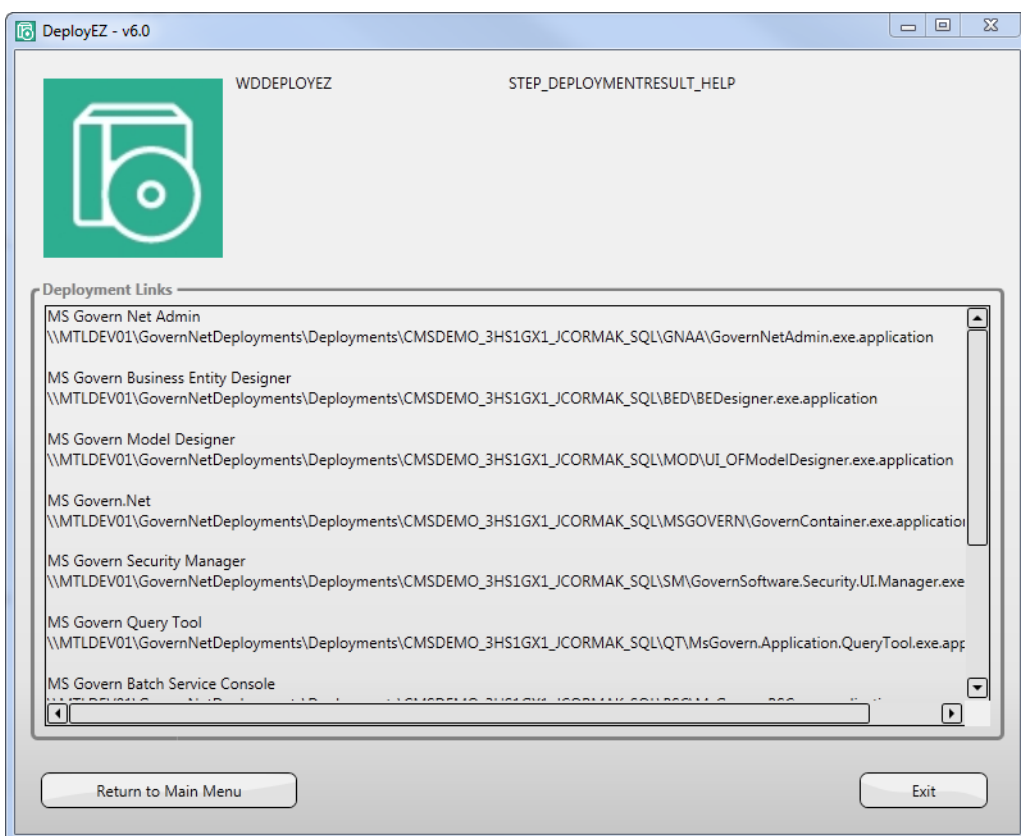
Overview

This chapter has two sections:

- Maintaining the End-User Deployment on page 67
- Installing and Updating Govern Applications on page 68

Maintaining the End-User Deployment

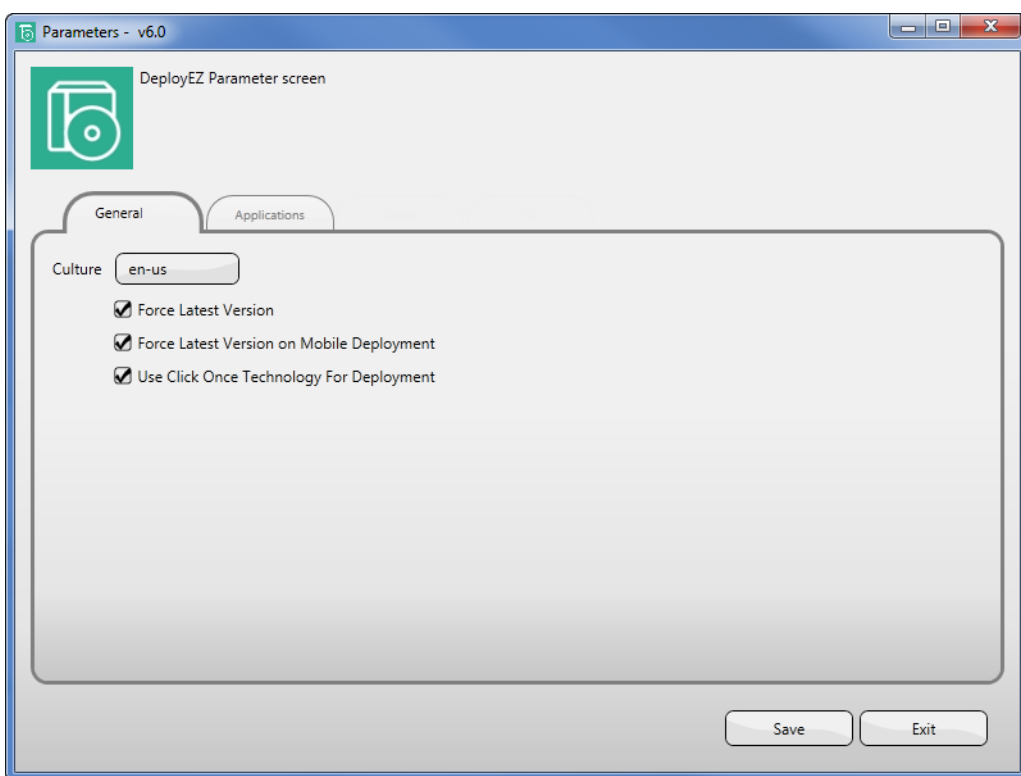
At the end of the deployment procedure, the links to the applications that were downloaded and installed on the server for the deployment are displayed on the *Deployment Links* page.



These links can be made available to the end-users on a shared directory or sent in an e-mail

Installing and Updating Govern Applications

Whenever the user launches a Govern OpenForms application, it is automatically updated, if the **Force Latest Version** option is selected. Otherwise, if this option is deselected, the user is presented a choice as to whether or not to install the latest version, when launching the application.



If **Force Latest Version** is selected, the installation program is automatically launched when the user clicks the application shortcut. If an updated version is available in the deployment folder, it is automatically installed on the client computer.

If **Force Latest Version** is deselected, the installation program is automatically launched to verify if a later version is available in the deployment folder. If there is a more recent version, a prompt appears and the user can choose to continue using the existing version or install the updated version.

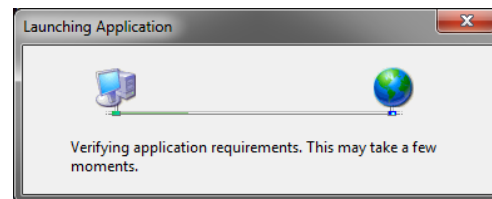
For further details, see *Installing and Configuring Govern Deploy EZ* on page 13.

Installing an Application

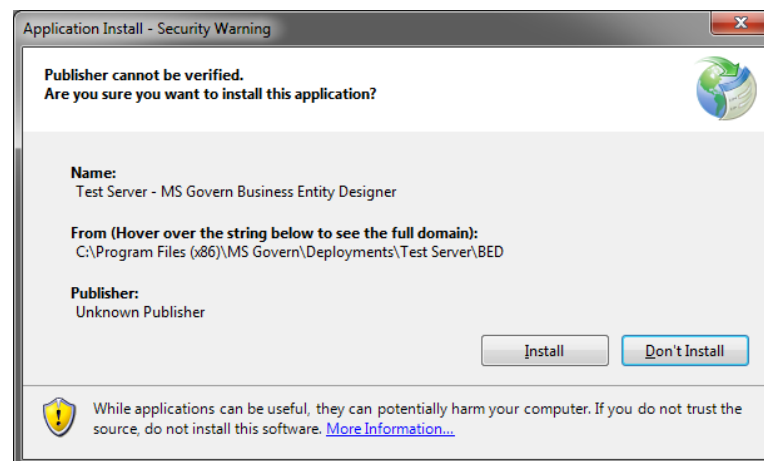
To install an application that is part of a deployment:

1. Click on the link of the UNC path.

The *Launching Application* screen appears.

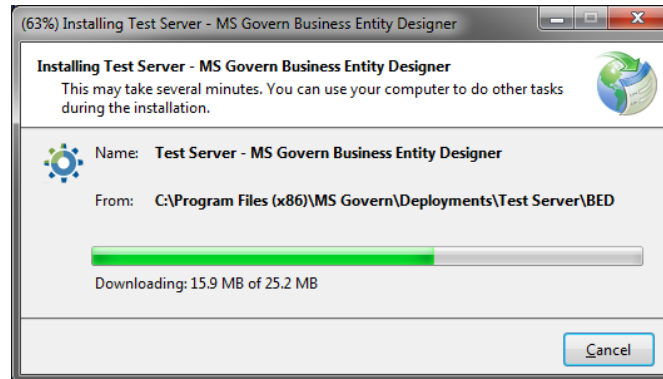


If an updated version is available, the *Application Install* screen is displayed.



2. Click **Install**.

The installation progress screen appears.



When the installation is complete, the splash screen of the application appears and the application opens.

Installing Services and Other Packages

When you are creating or updating a deployment with Deploy EZ, you can select an option to download Install Packages. The Install Packages are sorted into folders by release. They include the following:

Batch Service Scheduler Setup: Open this folder for the required installation file for the required service for the Govern Batch Scheduler. Refer to the Govern Batch Scheduler documentation for details.

Crystal Report Runtime: The runtime is required for opening and selecting crystal reports in Govern, GNA, or the Govern Batch Scheduler. *Refer to the GNA document ion for further details.*

WCF Service Setup: The WCF Service setup is required for the web services. *Refer to the PC Web Service document ion for details.*

Chapter 4: Uninstalling, Reinstalling, or Rolling Back Applications and Deployments



Overview

This chapter provides the required information for uninstalling, reinstalling, and rolling back an application or deployment:

Changing the Server

In order to change the server on which Deploy EZ is installed, you need to uninstall the application and all deployments from the current server. Then follow the procedure for creating a new deployment. *See Creating a New Deployment on page 35.*

Changing the Deployment Directory

If you want to change the directory on which Deploy EZ deployments are saved, you need to delete the configuration file. Then reinstall the Deploy EZ application and create the deployment again. *See Deleting a Deployment on page 64.*

Uninstalling

You can uninstall the deployment directory and shortcuts using the Delete button the Deploy EZ application. *See Deleting a Deployment on page 64.* You can uninstall a single application from Windows Control Panel.

If you want to completely uninstall a deployment, you need to uninstall all the applications and delete the configuration folder. *See Completely Uninstalling a Deploy EZ Deployment on page 72.*

Reinstalling

To reinstall a deployment, follow the procedure for creating a new deployment. *See Reinstalling Deploy EZ on page 75.*

Rolling Back

If required, you can easily roll back to a previous version. *See Performing a Rollback on page 76.*

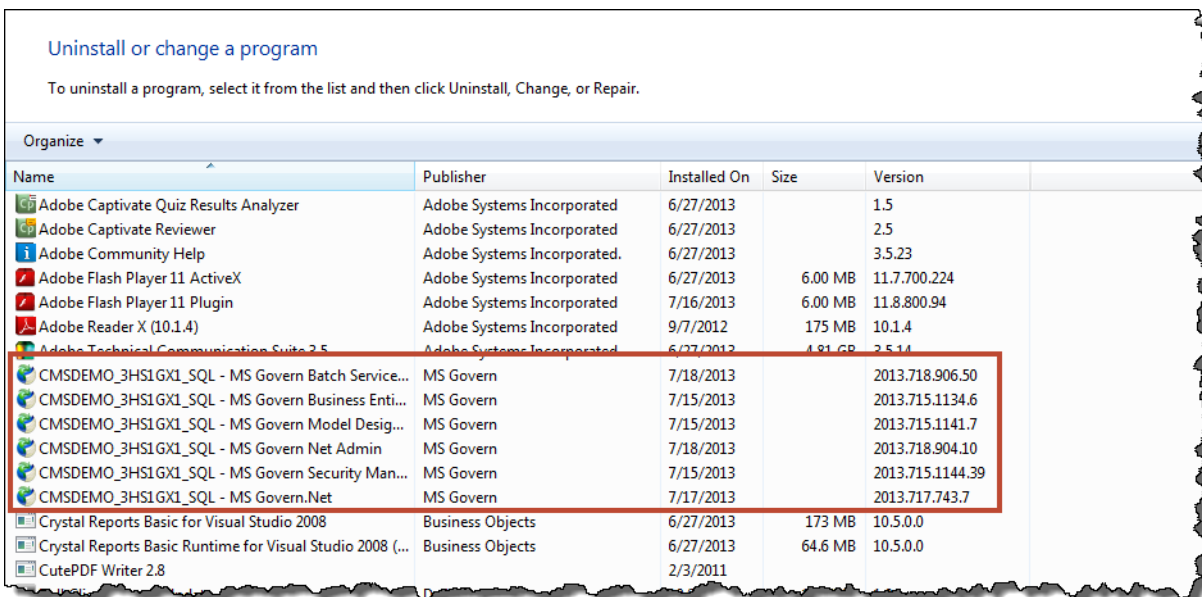
Completely Uninstalling a Deploy EZ Deployment

Overview

Completely uninstalling the deployment involves uninstalling all the applications in the Govern Product Suite and the contents of the deployment directory as described in the following procedure.

To uninstall Deploy EZ:

1. Close all Govern Product Suite applications.
2. Launch Windows Control Panel and open *Programs and Features* or *Uninstall a Program*.



The Govern Product Suite names are preceded by the database name. The version is made up of the year, the month, the day, the hour, the minute, and the second.





Govern Deploy EZ

Application names are as follows:

| Name in Add Remove Programs in Windows Control Panel | Govern Name |
|--|---------------------------------------|
| MS Govern Batch Service Console | Govern Scheduler |
| Govern Scheduler* | Govern Scheduler Service |
| MS Govern Business Entity Designer | Govern Business Entity Designer (BED) |
| MS Govern Model Designer | Govern Model Designer (MoD) |
| MS Govern Net Admin | Govern New Administration |
| MS Govern Security Manager | Govern Security Manager |
| MS Govern.NET | Govern |

*If you are uninstalling the Govern Scheduler, you need to uninstall both the application and the service.

- Right-click on an application in the deployment to remove it.
- Select **Uninstall** and follow the instructions on your screen.
- Repeat step 3 for each application in the deployment.
- Right-click on **MS Govern – Deploy EZ Installer**

| | | | |
|---|-----------|-----------|------------------|
|  MS Govern - .NET Component for Govern for Windows | MS Govern | 7/15/2013 | 10.7.0.3 |
|  MS Govern - Crystal Reports 2008 SP5 for Govern | MS Govern | 7/15/2013 | 12.5.0.2 |
|  MS Govern - DeployEZ Installer | MS Govern | 7/12/2013 | 37.2 MB 5.0.0017 |
|  MS Govern - Govern for Windows 10.7 Runtime | MS Govern | 7/15/2013 | 10.7.0.3 |

- If you installed Deploy EZ 4.7 or lower, the application is named Govern ClickOnce.
- If you installed Deploy EZ 5.0 or 5.1, the application is named MS Govern - Deploy EZ Installer.
- If you installed Deploy EZ 6.0, the application is named Deploy EZ.

The version is displayed in the **Version** column.

- Select **Uninstall** and follow the instructions on your screen.
- Repeat step 3 and 5 on each computer where the deployment is installed.

9. Delete or rename the following files and folders:

| File or Folder Name | Location |
|--|---|
| <p>ClickOnceDeployments.XML</p> <p>Note: you need Administrator privileges to save this file to a new location.</p> | <p>32 bit Windows: Program files\MS Govern\MS Govern - DeployEZ Installer.</p> <p>64 bit Windows: Program files (x86)\MS Govern\MS Govern - DeployEZ Installer</p> <p>also under \\Server Name\Deployment Root\Deployment Directory</p> |
| Deployments folder as well as all subfolders and files under this folder. | \\Server Name\Deployment Root\Deployments |
| GovernDABConfig.xml | \\Server Name\Deployment Root\Deployment Directory |
| ClickOnceSettings.xml | <p>If you created the deployment with Deploy EZ version 5.1 or lower:</p> <p>32-bit Windows: C:\Program Files (x86)\MS Govern\MS Govern - DeployEZ Installer</p> <p>64-bit Windows: C:\Program Files (x86)\MS Govern\MS Govern - DeployEZ Installer</p> <p>If you created the deployment with Deploy EZ version 6.0 or higher, delete the folder from the following location:</p> <p>C:\Users\<username>\AppData\Local\MS Govern\DeployEZ</p> <p>where username is the name of the user, such as C:\Users\jcormack\AppData\Local\MS Govern\DeployEZ</p> |

Reinstalling Deploy EZ

Overview

After uninstalling Deploy EZ, use the following procedure to reinstall the application and deployments. The procedure is the same as installing the application and setting up a deployment for the first time. See *Creating a New Deployment* on page 35.

Note: If you are installing the Govern Scheduler on a new server, you need to install the Govern Scheduler service as well as the application. Then, enter the new information for the service in the General Settings Editor in GNA. *Refer to the Govern Scheduler documentation for details.*

Performing a Rollback

Overview

The procedure for performing a rollback is the same as the procedure for updating a deployment, except that you install an earlier version of each application or package, rather than the most recent. The earlier version overwrites the existing version. The next time users log in, the earlier version is automatically installed, or they are asked to install it, as for a more recent version. This depends on how Deploy EZ is configured in your organization.

Note: It is possible to roll back from version 5.0 to 4.7; however, it is not recommended as the database structure is different.

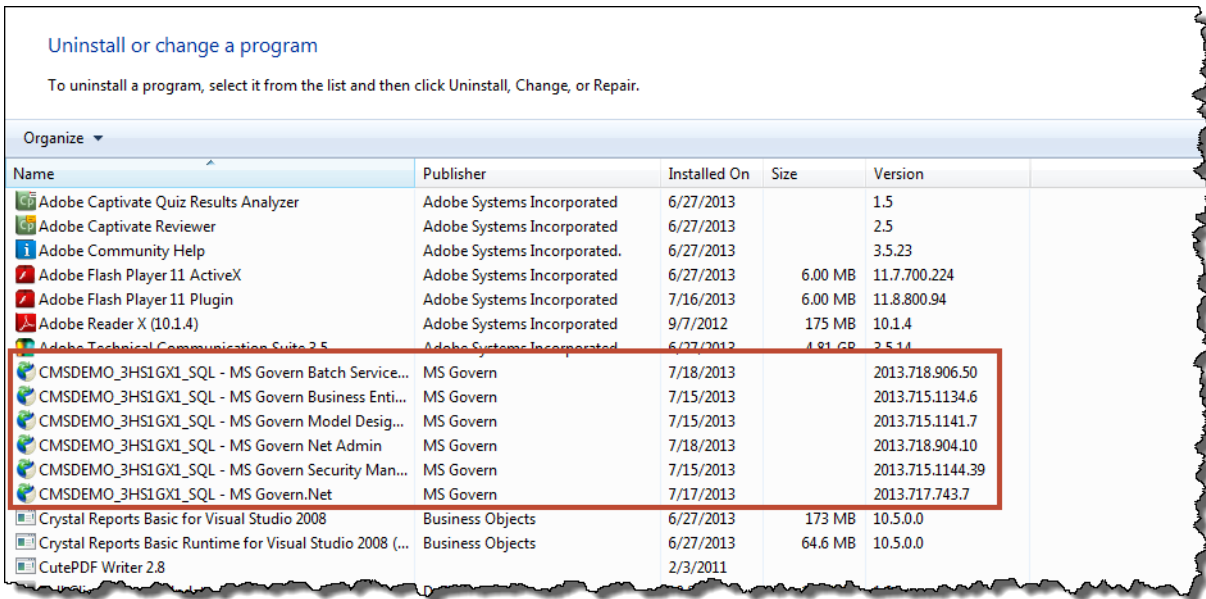
Force Latest Version

Before performing a rollback, you may want to make the following modification to the configuration.

Select or deselect the **Force Latest Version** option, according to whether you want to have all users use the latest version or whether you prefer to give them a choice.

The latest version is the one that was installed the most recently. In Windows Programs and Features or Uninstall a Program.

Govern Deploy EZ



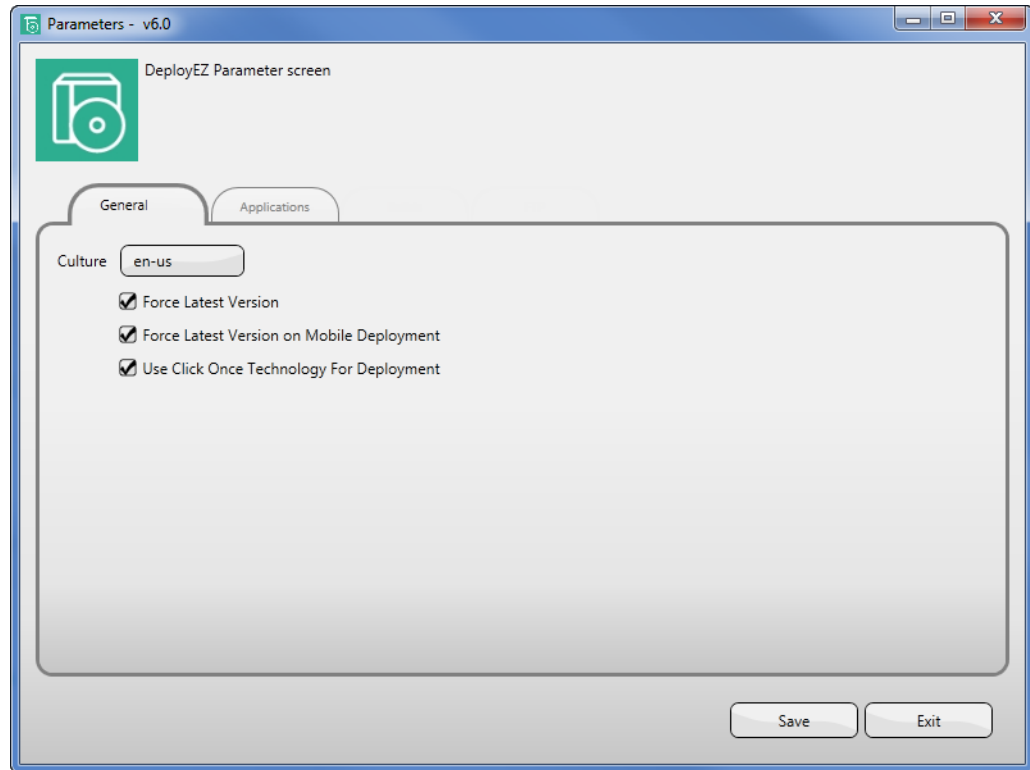
The Govern Product Suite names are preceded by the database name. The version is made up of the year, the month, the day, the hour, the minute, and the second that the application was deployed.

To configure the **Force Latest Version** option:

1. Launch Deploy EZ.
2. Click on the image in the upper left of the interface.



The Deploy EZ Parameters screen appears.



3. Do one of the following:
 - Select **Force Latest Version** to automatically install the most recently deployment.
 - Deselect the **Force Latest Version** option to prompt the user to install the latest version when launching an application.
4. Click **Save**.

See [Configuring Default Parameters for the Govern Product Suite](#) on page 20.

Performing the Rollback Procedure

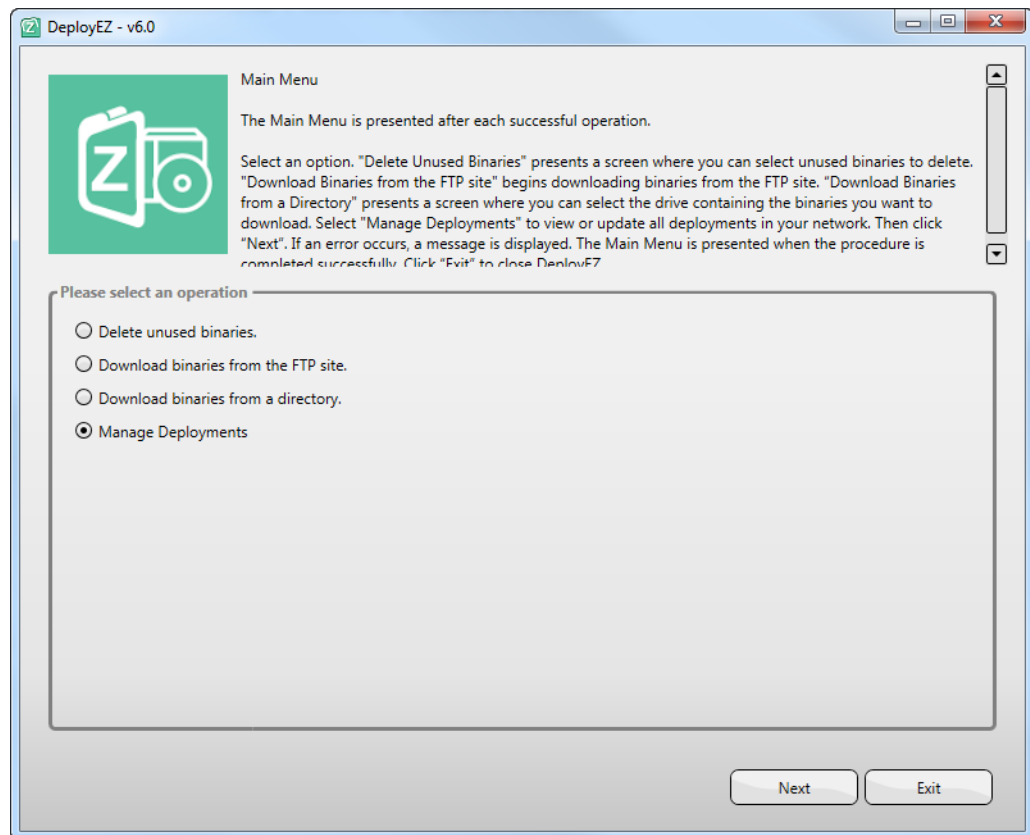
You may want to rollback to an earlier version of Govern OpenForms, if you experience an issue with the current version. For example, if you experience an issue with version 5.1.9, you can roll back to version 5.1.8.

The procedure is the same as for performing an update. You install the version that you want over the existing one. Rolling back from 5.1.9 to 5.1.8 is the same as updating 5.1.8 to 5.1.9.

To roll back to an earlier deployment or to an earlier version of one or more applications in the Govern Product Suite.

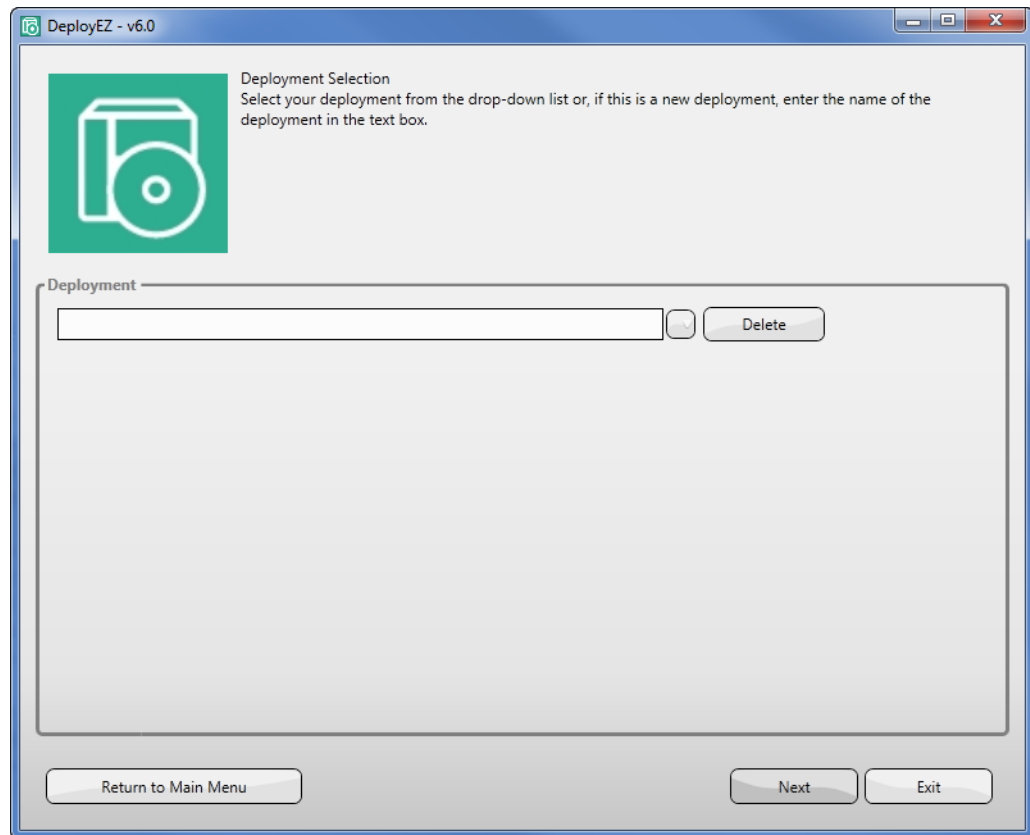
1. Launch Deploy EZ.

The *Main Menu* appears.



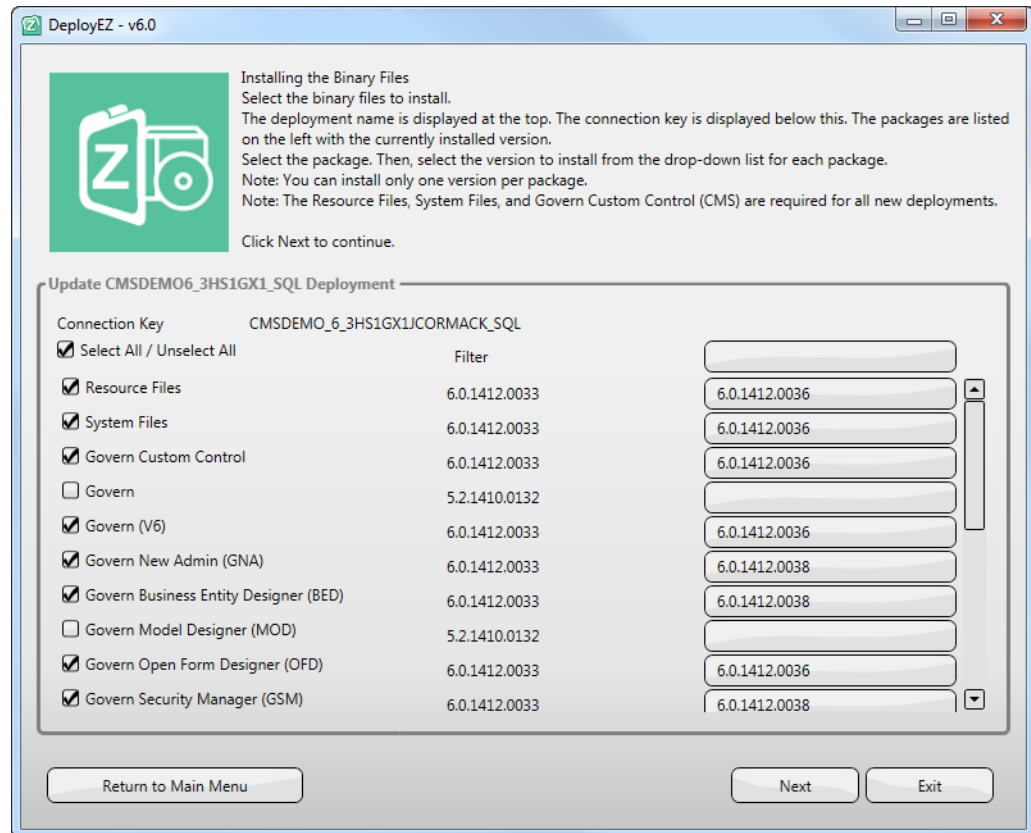
2. If you need to download the applications or packages, follow the steps under *Downloading Binaries from an FTP Site* on page 52.
3. Select **Manage Deployments** and click **Next**.

The *Deployment Selection* screen appears.



4. Select the deployment you are rolling back from the dropdown list and click **Next**.

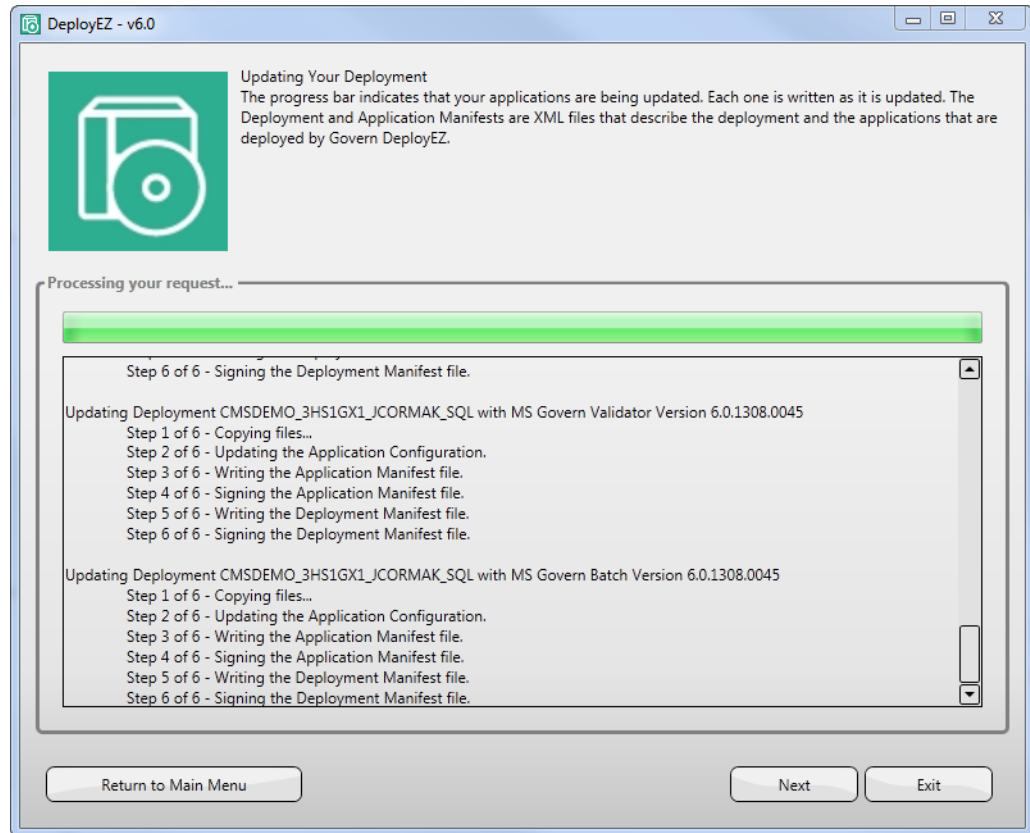
The *Installing the Binary Files* screen appears.



All available packages or applications in the Govern Product Suite are listed on the left under the deployment name. The latest version that was downloaded is displayed beside each package. When you are performing a rollback, this is a later version than the one you want to install.

5. Select the packages you want to roll back.
6. Select the version you want to install
7. Click **Next**.

The *Updating Your Deployment* screen appears.



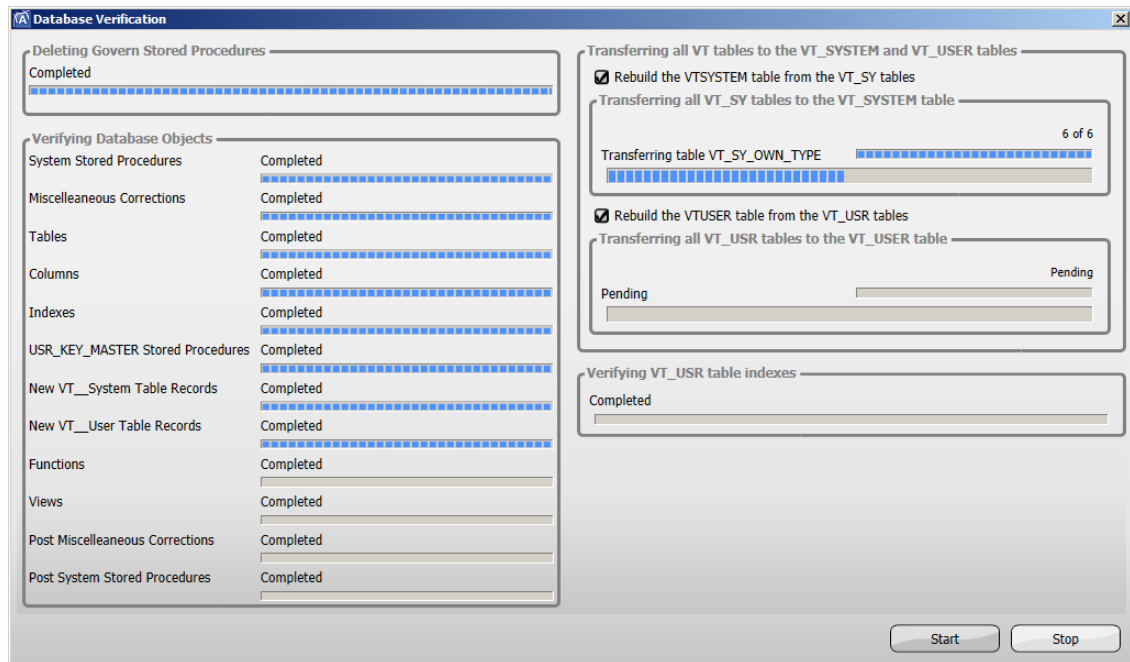
You can then add the links to your Deployment Directory and make them available to users.

Performing a Database Verification

It is recommended to perform a database verification when you create a new deployment, update an existing one, reinstall Deploy EZ, or perform a rollback.

To perform a database verification:

1. Launch Govern New Administration (GNA).
2. Select **Utilities > Database Utilities > Database Verification**.



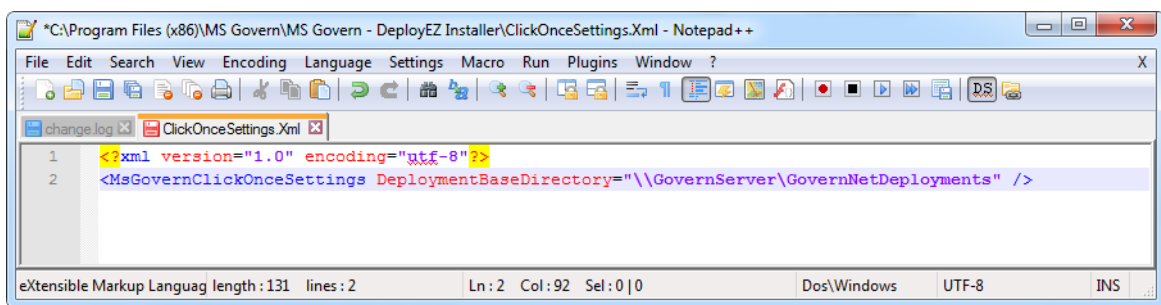
This process verifies and the database and makes any required updates. *For further details, refer to the Govern System Configuration & Administration guide.*

Changing the Deployment Directory or Connection Key

Overview

In order to change the deployment directory or connection key, you need to uninstall the Govern Product Suite applications in the current deployment and delete the Deploy EZ configuration folder.

This folder contains the configuration file where the deployment information is saved, `ClickOnceSettings.xml`.



Location of ClickOnceSettings.xml

The location of the file varies according to the Deploy EZ version that is installed.

Deploy EZ 5.1 or Lower

If you installed Deploy EZ, version 5.1 or lower, this file is located in one of the following locations, according to the Windows version that you are running:

- **64-bit Windows Version:** C:\Program Files (x86)\MS Govern\MS Govern - DeployEZ Installer
- **32-bit Windows Version:** C:\Program Files \MS Govern\MS Govern - DeployEZ Installer

Deploy EZ 6.0 or Higher

If you created the deployment with Deploy EZ version 6.0 or higher, delete `ClickOnceSettings.xml` from the following location:

`C:\Users\<username>\AppData\Local\MS Govern\DeployEZ`

where `<username>` is the name of the user who performed the installation.

Defining the New Deployment Directory

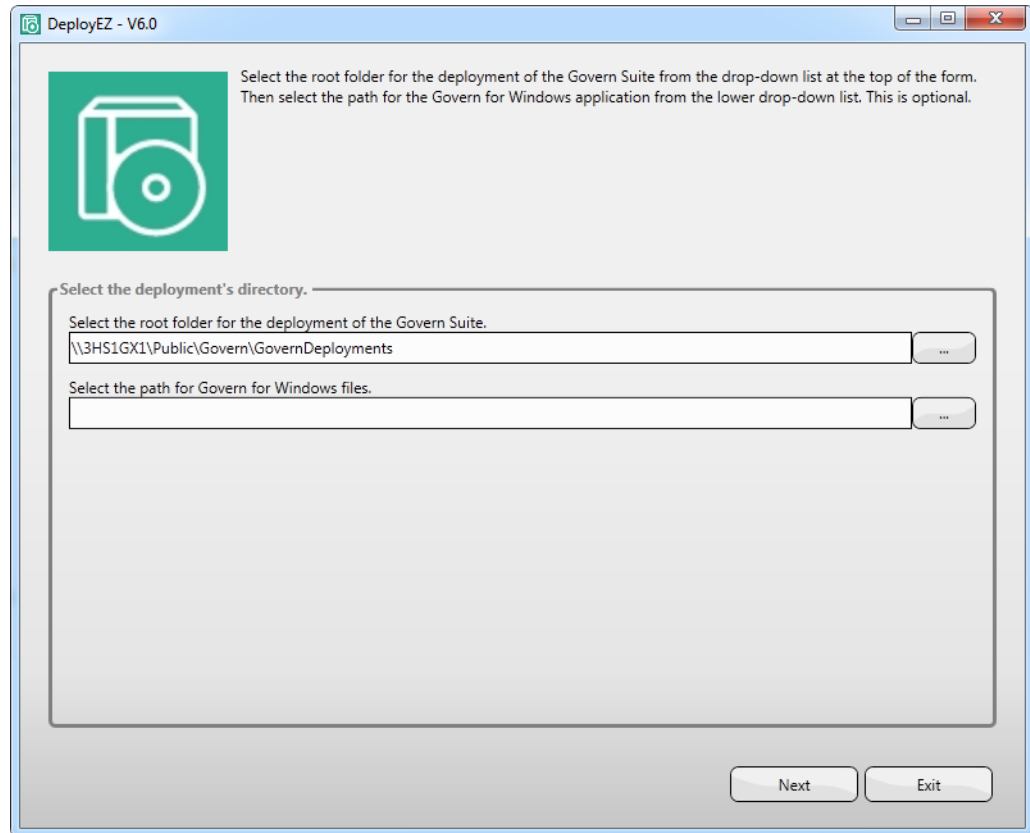
After deleting `ClickOnceSettings.xml`, the deployment directory screen appears when you launch Deploy EZ.

To enter the new deployment directory:

1. Delete `ClickOnceSettings.xml`.
2. Launch Deploy EZ.

The Deployment Directory screen is displayed.

Changing the Deployment Directory or Connection Key



3. Follow the instructions under *Creating a New Deployment* on page 35.

Note: When you change the deployment directory, the screens for creating a new connection key are also displayed. *Follow the instructions under Creating a Connection Key* on page 43.

Chapter 5: Troubleshooting

Overview

This section describes the following issues and provides solutions for them”

- Application Does Not Start on page 87
- Authentication Error on page 88
- Naming Deployments on page 90
- Changing Deployment Server Location on page 90
- Changing a Workstation Hosting Deploy EZ on page 91
- Duplicate Key Error in Oracle Databases on page 92
- Oracle and Different Character Sets on page 93

Application Does Not Start

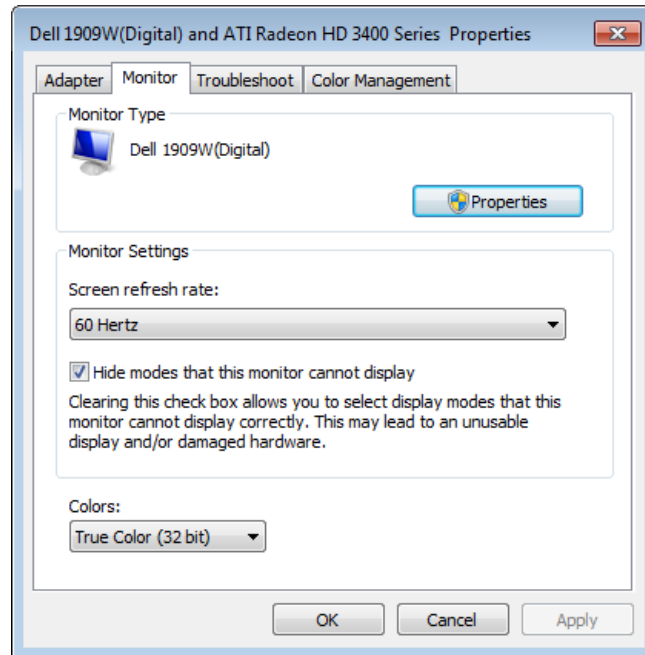
You may have a problem starting Deploy EZ or other Govern Product Suite applications, due to your Windows color-depth setting.

To resolve this problem, change your color setting to the default 32 bit color. All images and icons in the Govern Product Suite applications are created for 32 color and the application does not start if the color is not set to this depth.

The following procedure describes how to change the color depth in Windows 7.

To change to 32 bit color depth:

1. Launch Windows Control Panel.
2. Select **Appearance and Personalization > Display > Adjust Screen Resolution > Advanced Settings**.



3. Select **True Color (32 bit)** from the **Colors** drop-down list.
4. Click **OK**.

Authentication Error

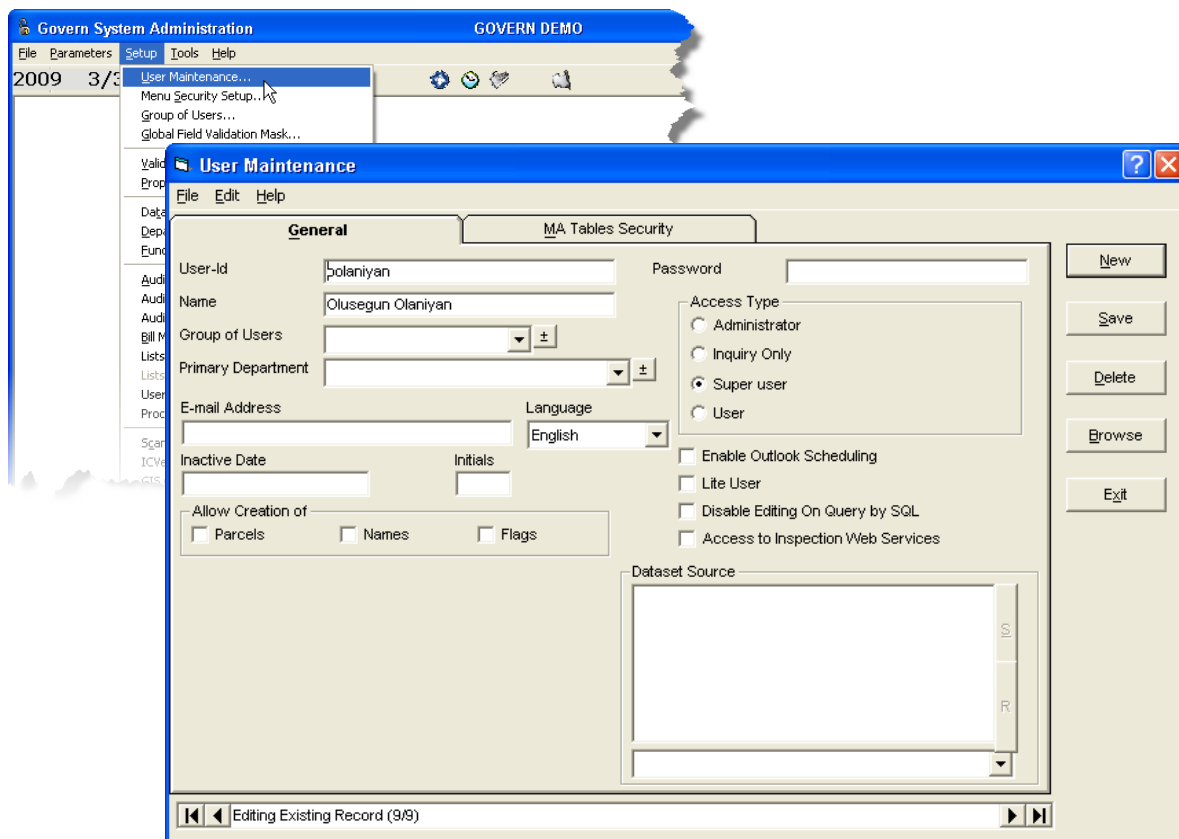
If you are presented with a request for a login when you attempt to run a Govern application, verify that your *Windows* authentication user name is in the Govern user table (Table: USR_USERFILE).

Resolution 1: To resolve this issue, create a User ID in the *Govern Admin* application.

To create a User ID:

1. Launch Govern Admin.

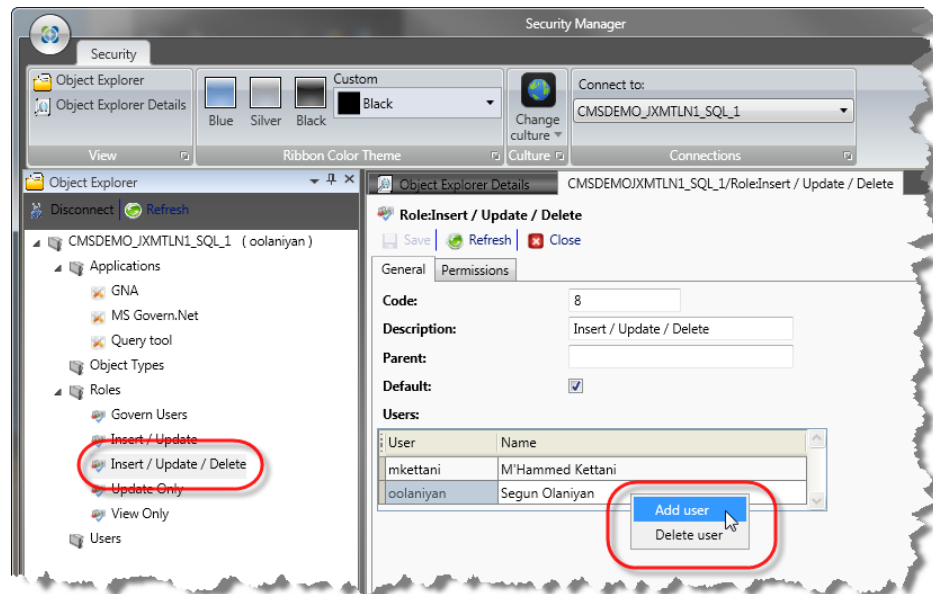
2. Select **Setup > User Maintenance**



3. In the *User Maintenance* form, create a new user; in the **User-ID** parameter, enter the identical name that is used for your *Active Directory* login.
4. Type a name that you will be recognized by in the **Name** parameter.
5. Specify an access type in the **Access Type** group.
6. Click **Save**.
7. Exit *Govern Admin* and try to install the application again.

Resolution 2: This resolution option is to set the required securities in the *Govern Security Manager* (GSM) application. Security can be set at either the

User level or the Role level. *Refer to the Govern Security Manager guide for further details.*



Naming Deployments

You can have multiple *Govern Deploy EZ* deployments in the same work environment; however, all deployments must have a unique name. If you try to create a new deployment using a name that already exists, an error occurs and you are unable to continue.

Resolution: As a means of avoiding the aforementioned cases, it is recommended that the naming of deployments be a centrally coordinated activity.

Changing Deployment Server Location

If you need to relocate the server hosting *Govern Deploy EZ*, the directory structure may change, i.e., the deployment path may be modified. In this case, an error message is displayed, stating that another installation with the same name exists at a different location.

Resolution: To resolve this scenario, when you change the location of a server, it is recommended to uninstall existing deployments, and to reinstall them on the new server.

Changing a Workstation Hosting Deploy EZ

Installing Deploy EZ on a workstation is not recommended. However, if the workstation is not changed, the application is functional. Issues can occur if the deployment is relocated, or the workstation is changed.

Resolution: To resolve the above scenario, copy the file `ClickOnceDeployments.xml` from the directory as the executable, and paste it in the same directory as the executable file on the new computer. The `ClickOnceDeployments.xml` file contains the history of all installations. The following is the files standard installation path:

Root_Dir:/Program Files/MS Govern/MS Govern ClickOnce Installer/.

Note: The `ClickOnceDeployments.xml` file is not deleted by the uninstall process of the application.

Note: After creating and distributing deployments, you have a need to uninstall and reinstall Deploy EZ application, it is recommended to create a backup of the **GovernNetConfig.xml** file before the uninstallation process. During the uninstallation process, this file containing the history of your current deployments is overwritten. The `GovernNetConfig.xml` file is located in the **\\ServerRoot\\Program Files (x86)\\MSGovern \\ Deployments** folder.

The following information cannot be modified from the Deploy EZ application after it is entered and saved:

- Location of the DAB file
- Location of the Deployment directory
- Deployment Information

Resolution: If you want to modify the deployment a re-installation that involves the modification of deployment information be required, the following modification steps must be followed in order to be able to re-enter new information.

To perform a reinstallation of the *Govern Deploy EZ*:

1. Rename or delete the `GovernDABConfig.xml` file located in the Deployment directory.

2. Rename or delete the **ClickOnceDeployments.Xml** file located in **Program Files \ MS Govern \ MS Govern - Deploy EZ**.

Note: Administrator level access credentials are required to modify and save this file to this location.

If you have a 64-bit version of Windows Vista / Windows 7, this file is located in the **Program Files (x86)** folder.

3. Uninstall *Govern Deploy EZ* through Windows **Control Panel**.
4. Reinstall *Govern Deploy EZ*.
5. Enter the updated information in the Deployment Directory parameter.

Duplicate Key Error in Oracle Databases

Issue: Duplicate keys can be created, in tables with sequence numbers, during the restore process of Oracle databases.

System counters are used as a means of monitoring records. When a record is created, a number, usually one, is added to the counter. If a counter is used as a key, a duplicate key record can be generated following the restore process of an Oracle database. Examples of affected tables are VT_SYSTEM_IDS and SY_STOREDPROC_LIST_IDS.

Resolution: Immediately after the restore process, run the Database Verification process in GNA.

To run the Database Verification:

1. Launch GNA.
2. Select **Utilities > Database Utilities > Database Verification**.

Refer to the Govern New Administration (GNA) guide for further details about this process.

Note: There are no known issues with the restore of an SQL backup.

Oracle and Different Character Sets

The national character set (NLS_NCHAR_CHARACTERSET) is used for data stored in NCHAR, NVARCHAR2, and NCLOB columns. The normal character set (NLS_CHARACTERSET) is used for data stored in CHAR, VARCHAR2, CLOB columns.

Issue: Issues can arise when the WE8ISO8859P1 NLS_CHARACTERSET is used in one database and WE8MSWIN1252 is used in another.

WE8MSWIN1252 contains additional characters. WE8MSWIN1252 is described as a logical super set of WE8ISO8859P1. It has 27 code points that do not exist in WE8ISO8859P1. As an example, in WE8MSWIN1252 the *Double Dagger* symbol (‡) is defined as code point 0x87 (hex 87), but in WE8ISO8859P1 the double dagger symbol is unassigned.

SQL, during serialization, uses special characters when storing information into the database, the characters not supported by WE8MSWIN1252 will be changed or removed. This can result in a corrupted business model that will not be functional in OpenForms.

Resolution: For compatibility, if the NLS_CHARACTERSET has been changed, perform the following steps:

1. Restore the character set back to **WE8MSWIN1252**.
2. Re-import the **NLS_CHARACTERSET**.

Note: It is recommended to enter all passwords manually.

Index

A

- About the Directory Structure Created 15
- Applications 30
- Authentication Type 46
- Automatic Locking 33

B

- Binary Files, installing 49
- Business Entity Designer (BED) 31

C

- Changing the Deployment Server Location 90
- Changing the Server 71
- Changing the Workstation hosting the DeployEZ 91
- ClickOnce Technology for Deployment 26
- Connection Key 43
- Crystal Report
 - Installing the runtime* 9
- Culture 23
- currency symbols 23
- Custom Controls 30

D

- Database Verification 82
- date formats 23
- Default Culture 23
- default culture, set 24
- default language 23
- Deploy EZ Parameters 22
- Deployment
 - Installing a Govern Application* 68
- Deployment Directory 6
- Deployment Server Location 90
- Deployments
 - Naming* 90
- Directory Structure
 - About Created* 15
- documentation 32

F

- Force Latest Version 25
- FTP site 52

G

- GNA 31
- Govern 31, 47
- Govern Batch 32
- Govern ClickOnce Installer 4
- Govern ClickOnce Publisher Deployments 4
- Govern Deploy EZ Application 16
- Govern for Windows Service Pack 32
- Govern Installation Pack 32
- Govern Query Tool 31
- Govern Scheduler 31
- Govern Security Manager (GSM) 31
- Govern Theme Builder 32
- Govern Validator 32, 56

I

- Installing and Updating Govern Applications Application 68
- Installing the Crystal Report runtime 9
- Introduction 1

L

- Lock, Refresh 34
- Locking 33

M

- Model Designer (MoD) 31
- MSAD 47

N

- Naming Deployments 90
- New Connection Key 45
- New Deployment 35

O

- OpenForms Designer (OFD) 31
- Oracle Database Users
 - Notes for* 9
- orce Latest Version on Govern Mobile 25
- organization name 46

P

- Performing a Rollback 76
- Performing a Rollback 76
- Prerequisites 5

Govern Deploy EZ

R

- reference database 32
- Reinstalling 75
- Resource Files 30
- Roaming Profiles 27
- roaming profiles 27
- Rollbacks 76
- Rolling Back An Application 76

S

- Scheduler Service 56
- Software License 45
- System Files 30

T

- Terminal Servers and Roaming Profiles 27
- Troubleshooting 87
- Troubleshooting User Installations 87
 - Authentication Error* 88

U

- Uninstalling 72
- User Authentication Error 88
- User Installation of a Deployment 87