

# **STD002 - Workflow**

**Workflow in MSGovern V6**

**Release 6.0 Version 1**

**Last Revision Update: 2014/06/12**

## Version History

Version	Date	Modify By	Description
1.0	2014/06/12	Eric Plante	Create document

## Summary

This document tells how to set up the workflow in Govern and what the functionalities are.

## Description

The workflow allows to set which activities to performe in steps. It depends on a type and some added fields to fill

## Classes

WorkflowType\_Control (CustonControl)

- Fill the combobox with rows from PM\_Type that fills WorkflowTypeKey object which requires KEY\_TYPE, ENTRY\_KEY\_TYPE and <workflow type>\_TYPE attributes
  - When selecting an item, fill the corresponding attributes.
  - The name of the workflow type attribute is based on what the user gives for type (co, of, ...) that got \_TYPE added to.
- Use a property to allow the user to select the workflow type from an enum

WorkflowAddedFields\_Control

- Monitor KEY\_TYPE, ENTRY\_KEY\_TYPE and <workflow type>\_TYPE attributes and load the added fields accordingly.

Workflow\_Controller

## Database

PM\_LK\_MASTER linked to PM\_Complaint.

USR\_LK\_PM\_FORM (must match fpc19w for the department)

PM\_TYPE

VT\_USER

### Example of the query that feeds the combobox

```
SELECT usr_lk_pm_form.form_name,  
vt_user.*,  
pm_type.no_multiple,  
pm_type.entry_key_type,  
pm_type.category  
FROM pm_type  
JOIN usr_lk_pm_form ON (pm_type.pm_type = usr_lk_pm_form.pm_type  
AND pm_type.dept_id = usr_lk_pm_form.dept)  
JOIN vt_user ON (vt_user.code=pm_type.pm_type  
AND vt_user.dept=pm_type.dept_id )  
WHERE vt_user.table_name='COTYPE'  
AND pm_type.key_type='co'  
AND usr_lk_pm_form.form_name='fpc19w'  
AND pm_type.entry_key_type is not NULL  
AND pm_type.dept_id = '16'  
AND pm_type.entry_key_type = 'P_ID'  
ORDER BY vt_user.code
```

## Functionalities

Choose a workflow Type

Show the added fields based on the selected workflow type

After creation, Initiate the first activity

Create, update, save and delete workflows.

Override fees when updating a workflow

During creation and deletion:

- A report can be loaded
- Multimedia documents can be created
- Inspections can be overridden
- Ar and GI accounts can be overridden (Also during fee override)
- Link to name can be overridden
- Email user information can be overridden (Creation only)

# Configuration

## BED

The screenshot shows the Govern Business Entity Designer (BED) interface. The main window displays the 'List of Attributes' table, which lists attributes for the 'PM\_COMPLAINT' table. The 'CO\_ID' attribute is highlighted in red. A blue arrow points from the 'CO\_ID' attribute in the table to the 'Properties' panel on the right, specifically to the 'Is Required' property, which is also highlighted in red. A text box with an arrow pointing to the 'CO\_ID' attribute states: 'The controller will create everything so CO\_ID key must not be required and not be a governed type for that purpose'.

Attribute	Data Type	Is PrimaryKey	Is Required	Datasource	Table	Column
CO_ID	Int	True	False	UC2013	PM_COMPLAINT	CO_ID
CO_NUMBER	Text	False	False	UC2013	PM_COMPLAINT	CO_NUMBER
CO_TYPE	Text	False	False	UC2013	PM_COMPLAINT	CO_TYPE
CREATED_ON_W	Text	False	False	UC2013	PM_COMPLAINT	CREATED_ON_W
EXPIRATION_DA	Datetime	False	False	UC2013	PM_COMPLAINT	EXPIRATION_DA
HISTORY_DATA	Text	False	False	UC2013	PM_COMPLAINT	HISTORY_DATA
LAST_FEE	Real	False	False	UC2013	PM_COMPLAINT	LAST_FEE
LAST_FEE_DATE	Datetime	False	False	UC2013	PM_COMPLAINT	LAST_FEE_DATE
LAST_MODIF_DA	Datetime	False	False	UC2013	PM_COMPLAINT	LAST_MODIF_DA
LAST_MODIF_UI	Text	False	False	UC2013	PM_COMPLAINT	LAST_MODIF_UI
NOTES	Text	False	False	UC2013	PM_COMPLAINT	NOTES
PRIORITY	Text	False	False	UC2013	PM_COMPLAINT	PRIORITY
REQUEST_DATE	Datetime	False	False	UC2013	PM_COMPLAINT	REQUEST_DATE
START_DATE	Datetime	False	False	UC2013	PM_COMPLAINT	START_DATE
STATUS	Text	False	False	UC2013	PM_COMPLAINT	STATUS
TOTAL_FEE	Real	False	False	UC2013	PM_COMPLAINT	TOTAL_FEE
WYTRIC	Text	False	False	UC2013	PM_COMPLAINT	WYTRIC
TAXYEAR	Int	False	False	UC2013	PM_COMPLAINT	TAXYEAR
ASMTYEAR	Int	False	False	UC2013	PM_COMPLAINT	ASMTYEAR
ENTRY_KEY_TYP	Text	False	False	UC2013	PM_COMPLAINT	ENTRY_KEY_TYP
PRIMARY_DEPT	Text	False	False	UC2013	PM_COMPLAINT	PRIMARY_DEPT
KEY_ID	Int	True	False	UC2013	PM_LK_MASTER	KEY_ID
KEY_TYPE	Text	True	True	UC2013	PM_LK_MASTER	KEY_TYPE
REF_ID	Int	True	True	UC2013	PM_LK_MASTER	REF_ID

Validation Rules for Current Attribute: COID

Validation ID	Rule Name	Engine Type	Expression	Is Shared
---------------	-----------	-------------	------------	-----------

Properties

- 1 - Basic Data Settings
  - ATTRIBUTE: CO\_ID
  - Data Type: Int
  - Length: 4
  - Default Value: None
  - Is PrimaryKey: True
  - Is Required: False
  - LookUp Value: None
  - Encrypted Value: False
  - Is Searchable: False
  - Special Attribute: None
- 2 - Data Mapping Settings
  - DataMapping: RelationalDatabase
  - Datasource: UC2013
  - Table: PM\_COMPLAINT
  - Column: CO\_ID
  - Identity Type: None
- 3 - Displaying Settings
  - Label (EN): Complaint Id
  - Label (FR): Co Id
- 4 - Help Settings
  - Help (EN): Co Id
  - Help (FR): Co Id
- 5 - Central Notes
  - Allow Notes: False
  - Allow is require: False

The screenshot shows the Govern Business Entity Designer (BED) interface in the 'Tables (Relationship)' view. It displays a relationship diagram between 'PM\_COMPLAINT' (Parent Table) and 'PM\_LK\_MASTER' (Child Table). The 'CO\_ID' attribute of 'PM\_COMPLAINT' is linked to the 'KEY\_ID' attribute of 'PM\_LK\_MASTER'. The 'Properties' panel on the right shows the settings for the 'KEY\_ID' attribute.

Parent Tables

- PM\_COMPLAINT
- PM\_LK\_MASTER

Child Tables

- PM\_LK\_MASTER

Parent Columns

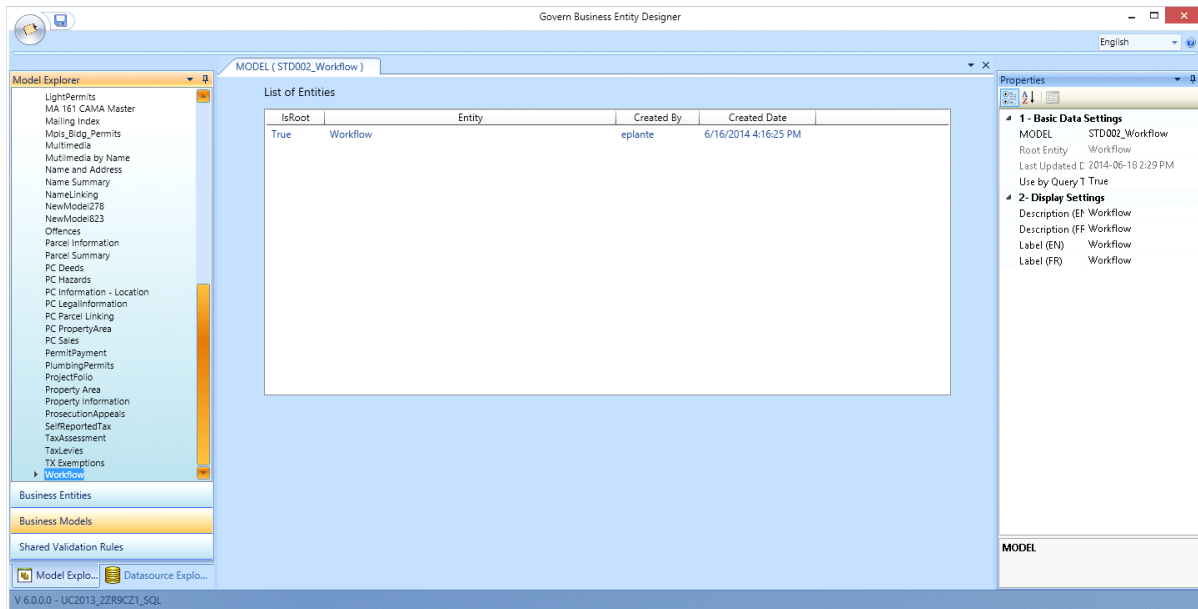
- CO\_ID

Child Columns

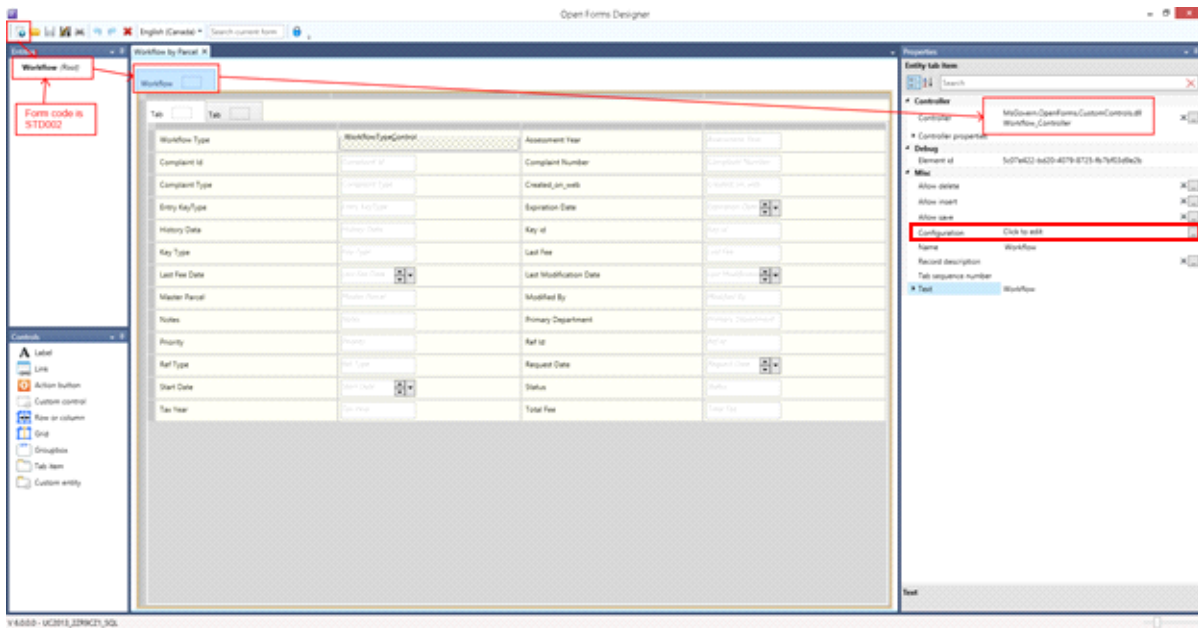
- KEY\_ID

Properties

- 1 - Basic Data Settings
  - ATTRIBUTE: KEY\_ID
  - Data Type: Int
  - Length: 2
  - Default Value: None
  - Is PrimaryKey: False
  - Is Required: False
  - Calculated Value: False
  - LookUp Value: None
  - Encrypted Value: False
  - Is Searchable: False
  - Special Attribute: None
- 2 - Data Mapping Settings
  - DataMapping: RelationalDatabase
  - Datasource: UC2013
  - Table: PM\_COMPLAINT
  - Column: KEY\_ID
  - Identity Type: None
- 3 - Displaying Settings
  - Label (EN): Created\_on\_web
  - Label (FR): Created\_on\_web
- 4 - Help Settings
  - Help (EN): Created\_on\_web
  - Help (FR): Created\_on\_web
- 5 - Central Notes
  - Allow Notes: False



## OFD



Entity configuration

Attributes

Assessment Year

Complaint Id

Complaint Number

Complaint Type

Created\_on\_web

Entry KeyType

Expiration Date

History Data

Key id

Key Type

Last Fee

Last Fee Date

Last Modification Date

Master Parcel

Modified By

Notes

Primary Department

Priority

Ref Id

Ref Type

Request Date

Start Date

Status

Tax Year

Total Fee

Filters by system ID

Attribute	System ID	
Ref Id	parcel id	
Primary Department	department	

Filters by constants

Attribute	Operator	Constant
Ref Type	equal to	P_ID
Key Type	equal to	co

Order by

Attribute	Direction
-----------	-----------

Reposition

Attribute	System ID
-----------	-----------

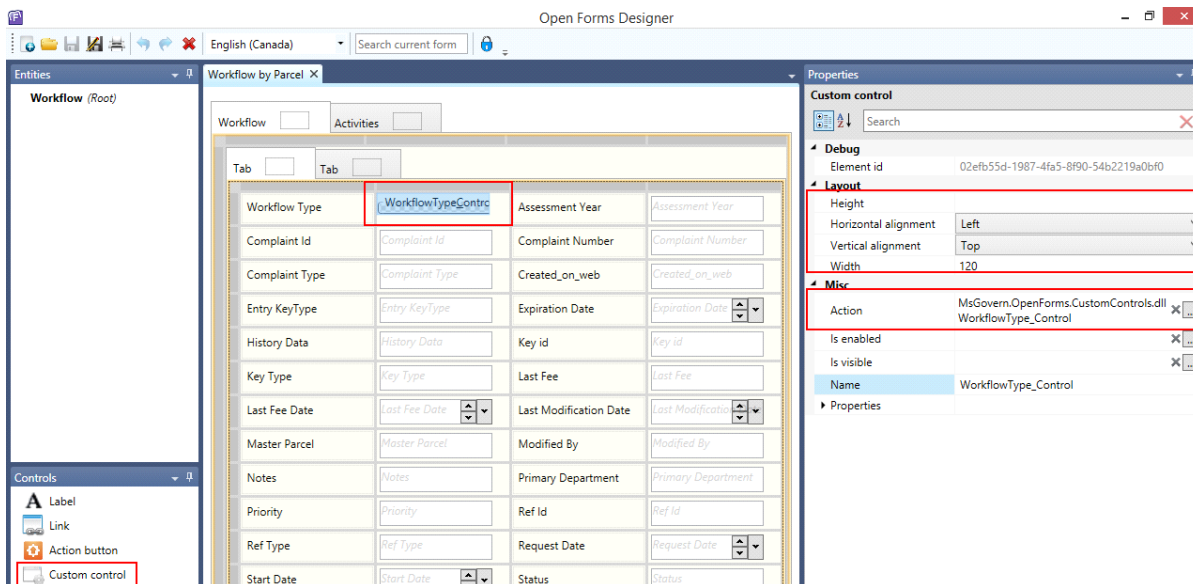
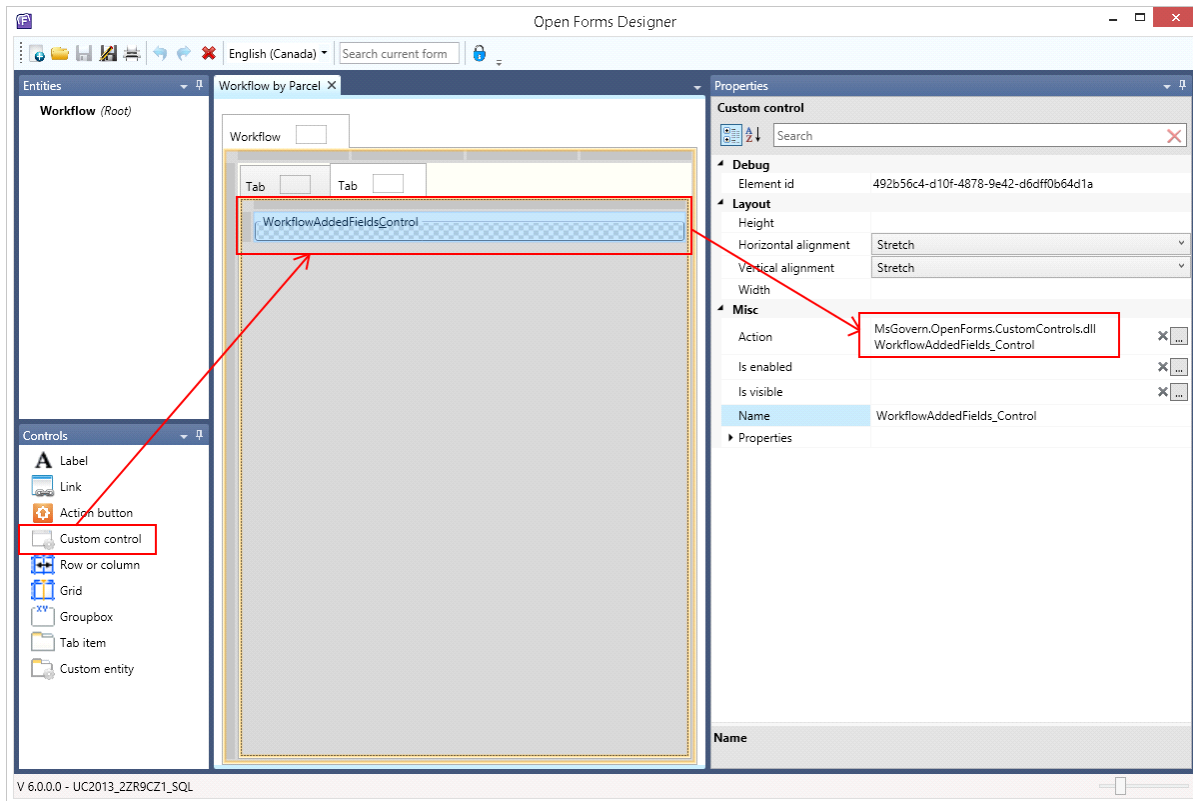
ID setters

Attribute	System ID
-----------	-----------

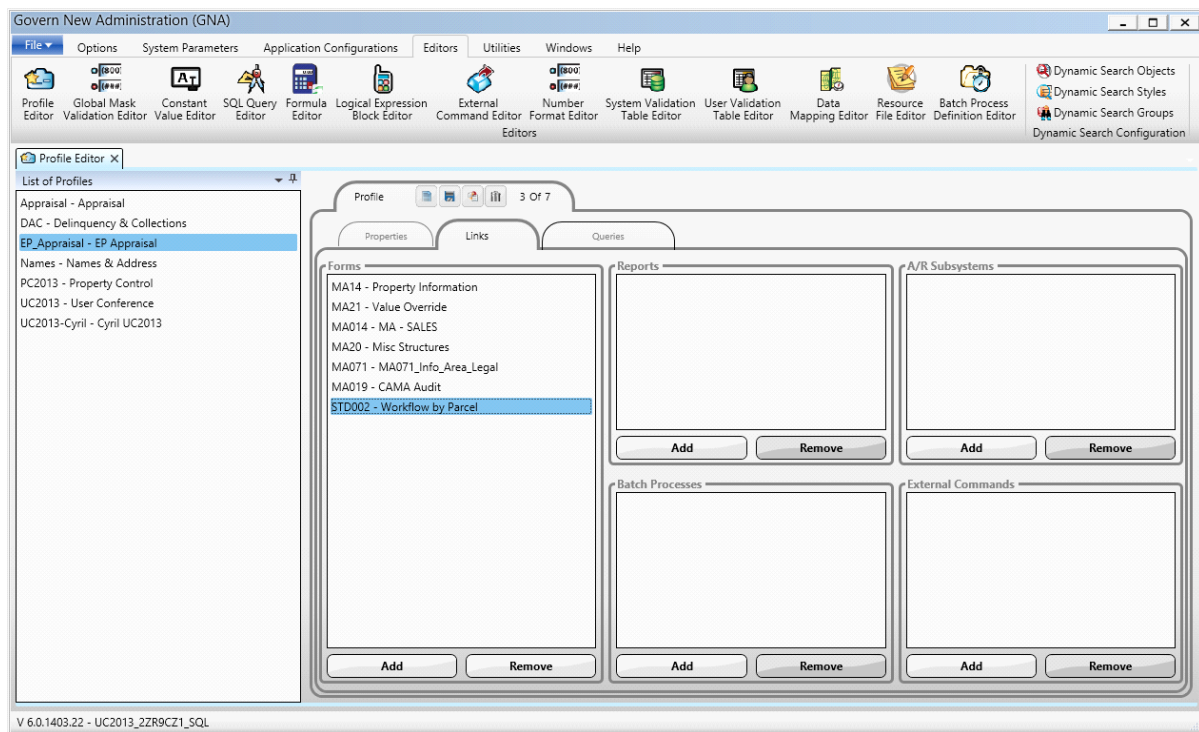
OK

Cancel

This workflow was made for parcels but you can use any Ids



## GNA



## IET

Not applicable

## Mobile

Not applicable

## Security

Not applicable

## Scenario