



I03-ut-fea-005
RE / PP Tax Conversion Script
Govern Network Administration (GNA) Feature V6

Release 6.0/6.1 Version 1
Last Revision Update: 2018/03/22

Version History

Version	Date	Modify By	Description
1.0	2018/03/20	Olusegun Olaniyan	Create document

Disclaimer

Harris Govern has taken due care in preparing this manual. However, nothing contained herein modifies or alters in any way the standard terms and conditions of the purchase, lease, or license agreement by which the product was acquired, nor increases in any way the liability of MS Govern to the customer.

Table of Contents

Version History.....	2
OVERVIEW.....	5
Software Changes	5
Functionality	5
Govern Network Administration (GNA).....	6
Execution in GNA	6
APPENDIX.....	8
Tables	8

OVERVIEW

In Govern for Windows a Cycle Code was not mandatory. As a result of the architectural change in Govern for .NET, a Cycle code in Real Property (RE) and Personal Property (PP) is mandatory. The default Cycle Code is "RE". A script will need to be provided in order to create a Cycle code and change all existing Data to this cycle code.

*This feature is available in Release **6.1.1706.0418** and **6.1.1707.0537***

Software Changes

In the system, the following software changes were made:

- An error was added in the Verify Database process to validate the presence of any RE data that does not have a cycle code.
- A script was written to create a cycle code and update all RE data in the system.

Two (2) options are available for this modification. The first option will link the query to the Verify Database message. The second option creates a new menu in the database utilities / conversion for RE and add the query at this location.

Functionality

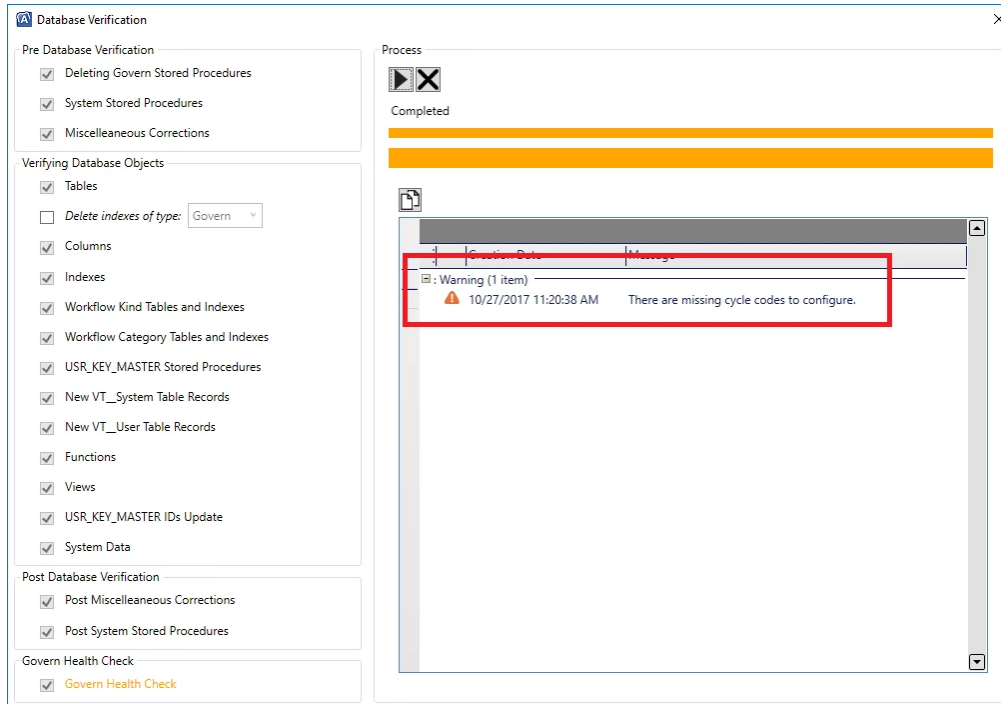
When the Database Verification process is initiated, updates are made to the Real Property (RE) and Personal Property (PP) subsystems. The script will be run on each subsystem only if the following preconditions are met:

- The scripts has never been initiated on the subsystem
- There is no property cycle code
- There are existing assessment records in either the RE or PP subsystems

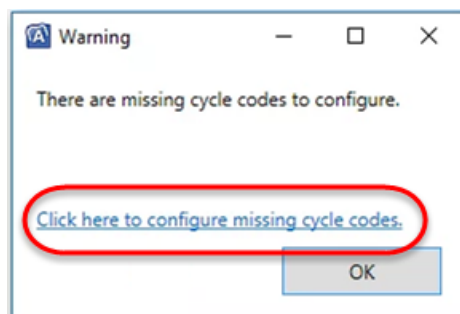
If it has been determined that the preconditions have been met for either or both subsystems, script

Govern Network Administration (GNA)

Execution in GNA



The process is executed when the GNA Database Verification process is initiated. During the last phase of *Govern Health Checks*, one of the “checks” will include determination of whether cycle codes are not correctly configured. If the required conditions described in the *Functionality* section above are met, then the script will run. A warning message is displayed before the script is executed. A double-click on the warning in the grid will display a popup window with a hyperlink.

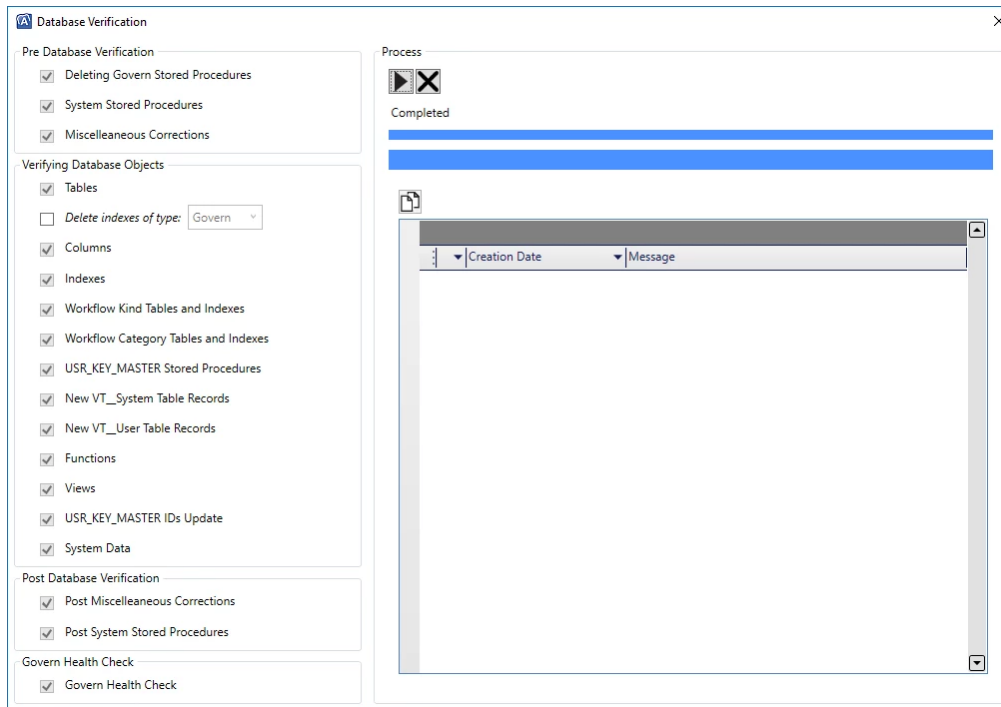


A click on the hyperlink will initiate the script based upon the conditions set in the Functionality section above. For details, refer to Technical Documentation at the following URL -

<https://harrisgovern.atlassian.net/wiki/spaces/govrd/pages/86704132/RE+Tax+Conversion+Script+-+Missing+VB6+to+.NET+Cycle+Codes+Configuration+for+RE+PP>.

NOTE: The busy cursor is the only visual indicator that the script is running.

Upon successful conclusion of the Database process, i.e. the required queries have been run with no returned errors, this message will not be presented again as the record will have been added to (Table: SY_EXEC_MISC_CORR_SCRIPT).



APPENDIX

Tables

NOTE: Technical details are found on the following Confluence page:

<https://harrisgovern.atlassian.net/wiki/spaces/govrd/pages/86704132/RE+Tax+Conversion+Script+-+Missing+VB6+to+.NET+Cycle+Codes+Configuration+for+RE+PP>