



HARRIS
GOVERN



Crystal Report Portrait / Landscape Printing Feature Govern V6

Release 6.0/6.1 Version 1

Last Revision Update: 10/16/2018

[illegible]

Disclaimer

Harris Govern has taken due care in preparing this manual. However, nothing contained herein modifies or alters in any way the standard terms and conditions of the purchase, lease, or license agreement by which the product was acquired, nor increases in any way the liability of MS Govern to the customer.

Table of Contents

Overview	5
Functionality	5
User Interface	5
Configuration	6
Changing the Print Parameter	7
Printing a Landscape Orientation Report.....	7

Overview

Govern for OpenForms is installed with the standard **Crystal Reports™** viewer for viewing its standard reports. These reports are generated, typically as a result of a batch process, and are viewed in the embedded *Crystal Report Viewer*. Reports can be printed out through the *Crystal Reports* viewer. Users may also design their own reports, and depending on their business requirements, some users may create reports that are intended to be displayed in a landscape orientation. There is a known issue with the Crystal Report viewer that can prevent the correct printing of custom reports that are designed in the Landscape orientation.

NOTE: Correct printing of reports that are designed in the Landscape orientation is a recurring issue with different versions of the Crystal Report viewer. This issue dates back to 2009.

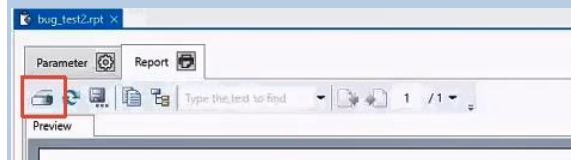
This print issue is known in the following Govern Releases:

- 6.0.1611.0742
- 6.0.1803.0197
- 6.0.1804.0392
- 6.1.1611.0761
- 6.1.1803.0639
- 6.1.1804.0702

Functionality

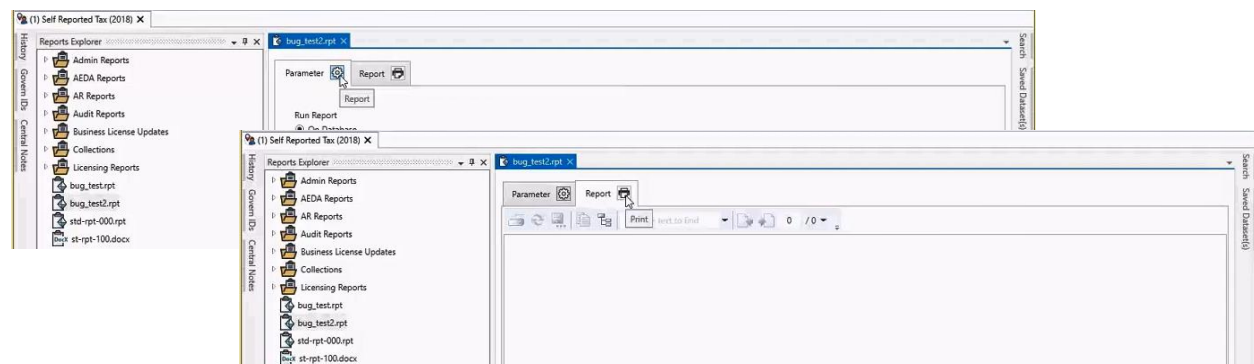
In order to resolve this issue, a print button has been added to the tab header of the Crystal Report viewer screen. The function of this button is to bypass the print process. Instead of using the built-in print function of the viewer, this button will bypass the viewer. This functionality is not new; it is shared with other Govern functions such as receipt printing.

NOTE: This print feature should only be used for reports that have been created to be printed in the Landscape orientation. All other reports can still use the standard print functionality that is available along the top row of the embedded *Crystal Report* viewer.

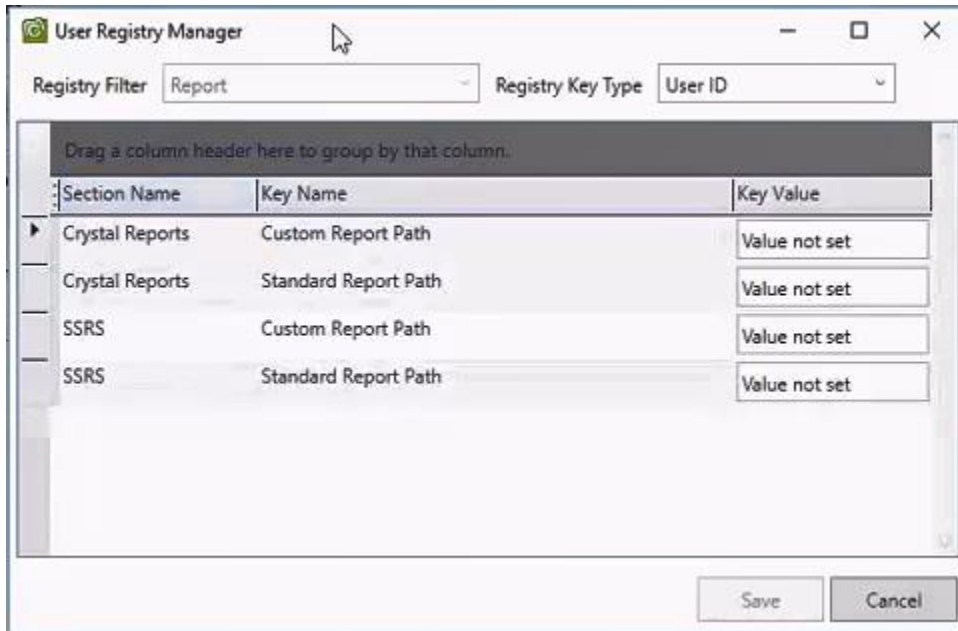


User Interface

There are two (2) buttons that are available to the user when the functionality of this feature is present. One button is located on the Parameter tab, and the second on the Report tab. Note that the **Print** button will not be enabled until a report has been generated.



Configuration



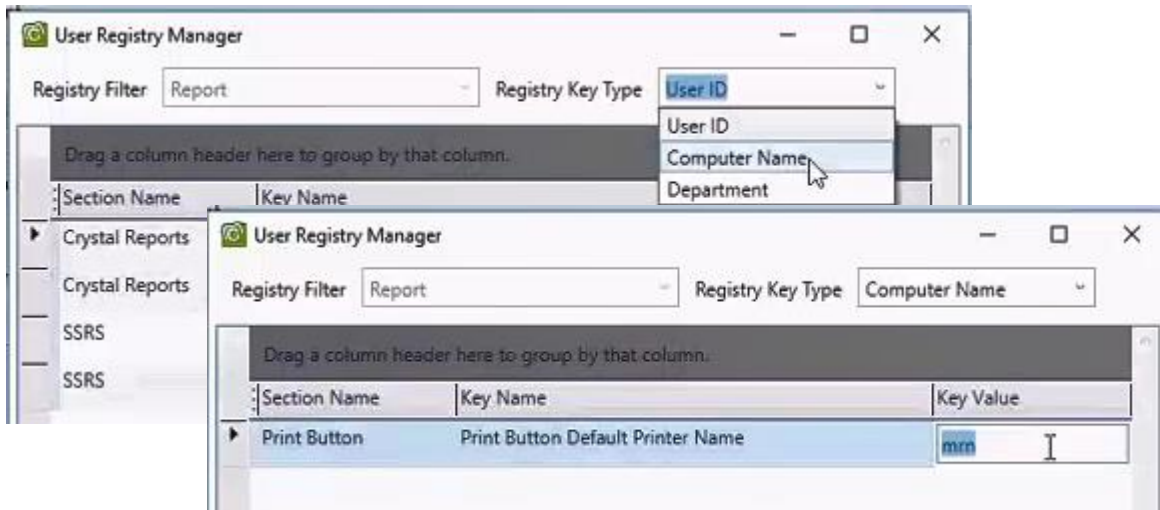
The screenshot shows the 'User Registry Manager' window. At the top, 'Registry Filter' is set to 'Report' and 'Registry Key Type' is set to 'User ID'. Below this is a table with columns 'Section Name', 'Key Name', and 'Key Value'. The table contains four rows: 'Crystal Reports' with 'Custom Report Path' and 'Standard Report Path', and 'SSRS' with 'Custom Report Path' and 'Standard Report Path'. All 'Key Value' cells are empty and labeled 'Value not set'. At the bottom are 'Save' and 'Cancel' buttons.

Section Name	Key Name	Key Value
Crystal Reports	Custom Report Path	Value not set
Crystal Reports	Standard Report Path	Value not set
SSRS	Custom Report Path	Value not set
SSRS	Standard Report Path	Value not set

Prior to printing a report, you will need to enable this print functionality; a printer device will need to be configured in the *User Registry Manager* screen.

To configure a printer...

1. Open the Report.
2. Click on **Report** on the **Parameter** tab to display the *User Registry Manager* screen.
3. At the top in the Registry Key Type combo box, select Computer Name.

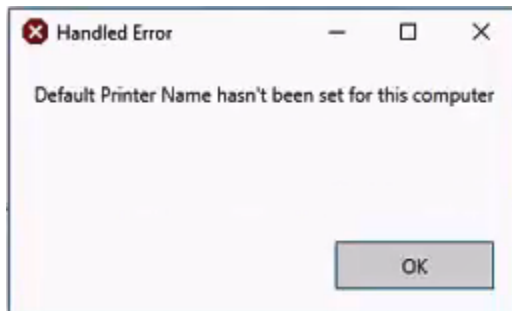


The screenshot shows the 'User Registry Manager' window with 'Registry Filter' set to 'Report' and 'Registry Key Type' set to 'Computer Name'. The table below shows the configuration for the 'Print Button'.

Section Name	Key Name	Key Value
Print Button	Print Button Default Printer Name	mm

4. On the right hand side (RHS) of the **Print Button** row, the value appearing under the Key Value heading will be the name of the printer that any document will be sent to by default.

NOTE: Ensure that a valid printer is entered, otherwise an error will be generated. If no printer name is entered and you attempt to print a report with this feature, a Handled Error window will be displayed and with the following message: **A default Printer Name has not been set for this computer.**



5. After making a change, click **Save** to save your settings.

Changing the Print Parameter

TIP: If you have changed the *Print Button* parameter in the **User Registry Manager**, you will need to “reload” Govern so that the change can be recognized by the system and used.

Printing a Landscape Orientation Report

As mentioned above this feature is intended for use with custom reports that are designed to present in a landscape orientation. After configuring your printer, to print out your landscape report...

1. Generate your report.
2. Click **Print** on the Printer tab.

