



**HARRIS**  
GOVERN



# **201-all-eGov-Display Periods as Text**

## **Govern V6**

**Release 5.1/6.0/6.1 Version 1**

Last Revision Update: 11/16/2016

[illegible]

## Table of Contents

OVERVIEW.....	4
Functionality .....	4
CONFIGURATION.....	5
Presentation in eGovern .....	5
APPENDIX.....	6
Tables .....	6

## OVERVIEW

Users of the Govern eGovern – Public Self Service Portal (Release 5.1.1407), that are using eRemittance to submit their filings online, will note the following enhancement. The periods for eFiling that are displayed online are, by default, only displayed as numeric values which correspond to the period of the filing. For example:

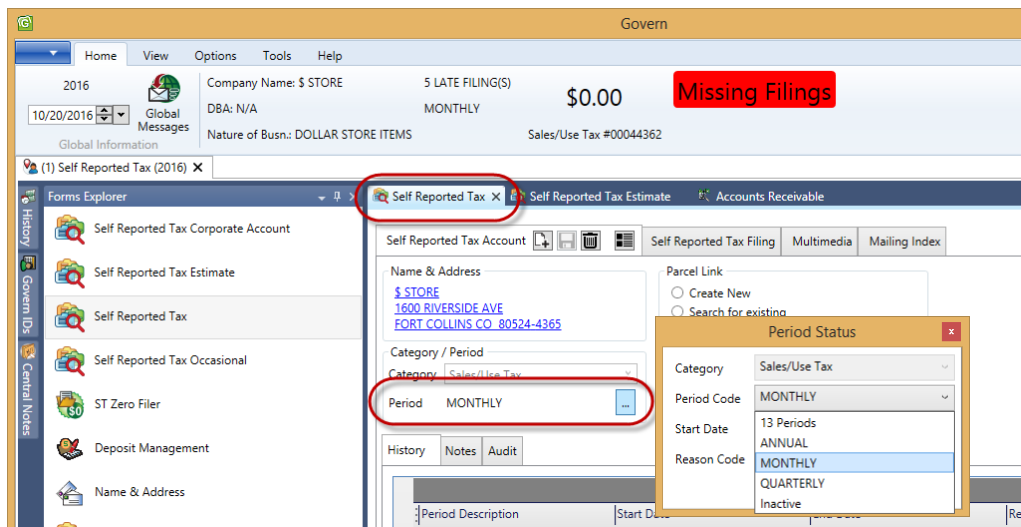
- 1 = 1st Month or 1st Quarter or Year
- 2 = 2nd Month or 2nd Quarter or Year

...and so on.

Straight numerical representation of months, quarters, and years are not always intuitive. This method of representation may also be error prone. As a result, the following system enhancement has been made.

## Functionality

The Govern system currently creates Tax Periods by year and assigns them to customer as a default reporting period through the Self Reported Tax Account Maintenance form.

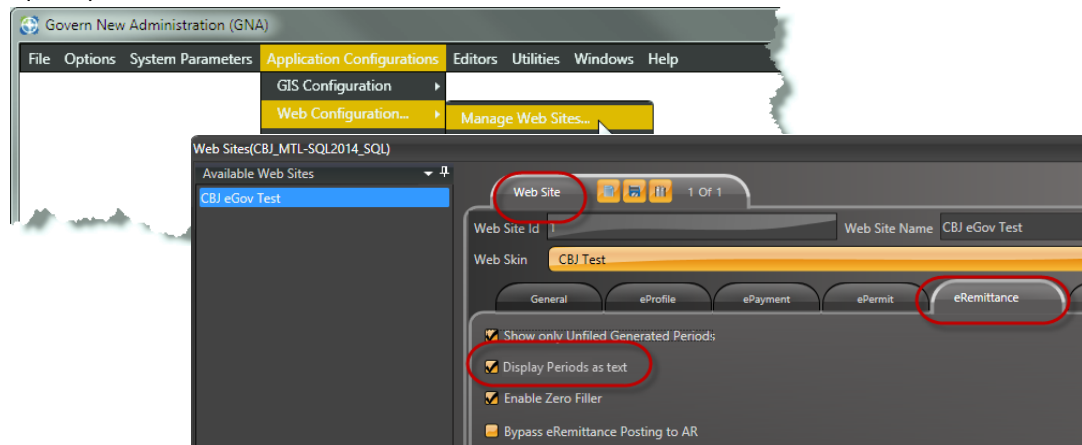


The screenshot shows the 'Govern' application interface. At the top, there's a navigation bar with 'Home', 'View', 'Options', 'Tools', and 'Help'. Below this, a header section displays '2016', 'Global Messages', 'Company Name: \$ STORE', '5 LATE FILING(S)', '\$0.00', and a red 'Missing Filings' button. The 'Nature of Busn.: DOLLAR STORE ITEMS' and 'Sales/Use Tax #00044362' are also visible. The main content area is titled '(1) Self Reported Tax (2016)'. On the left, a 'Forms Explorer' sidebar lists various forms like 'Self Reported Tax Corporate Account', 'Self Reported Tax Estimate', 'Self Reported Tax', 'Self Reported Tax Occasional', 'ST Zero Filer', 'Deposit Management', and 'Name & Address'. The 'Self Reported Tax' form is active, showing 'Name & Address' for '\$ STORE' at '1600 RIVERSIDE AVE, FORT COLLINS, CO, 80524-4365'. The 'Category / Period' section shows 'Category: Sales/Use Tax' and 'Period: MONTHLY'. A 'Period Status' dropdown menu is open, showing options for 'Category: Sales/Use Tax', 'Period Code: MONTHLY', 'Start Date: 13 Periods', and 'Reason Code: MONTHLY, QUARTERLY, Inactive'. Red circles highlight the 'Self Reported Tax' tab and the 'Period' dropdown menu.

The text based period descriptions are now displayed in the eGovern eRemittance forms.

## CONFIGURATION

This enhancement for displaying periods is enabled in the Manage Web Site form in the *Govern New Administration (GNA)* form.



To enable this feature...

1. In GNA, select Application Configuration > Web Configuration... > Manage Web Sites...
2. In the Web Site form click the eRemittance tab to display available options for eFiling.
3. Locate the **Display Periods as text** option and click the checkbox to enable the option.

**NOTE:** If not enabled (Default), the Govern system will display the periods in numerical format.

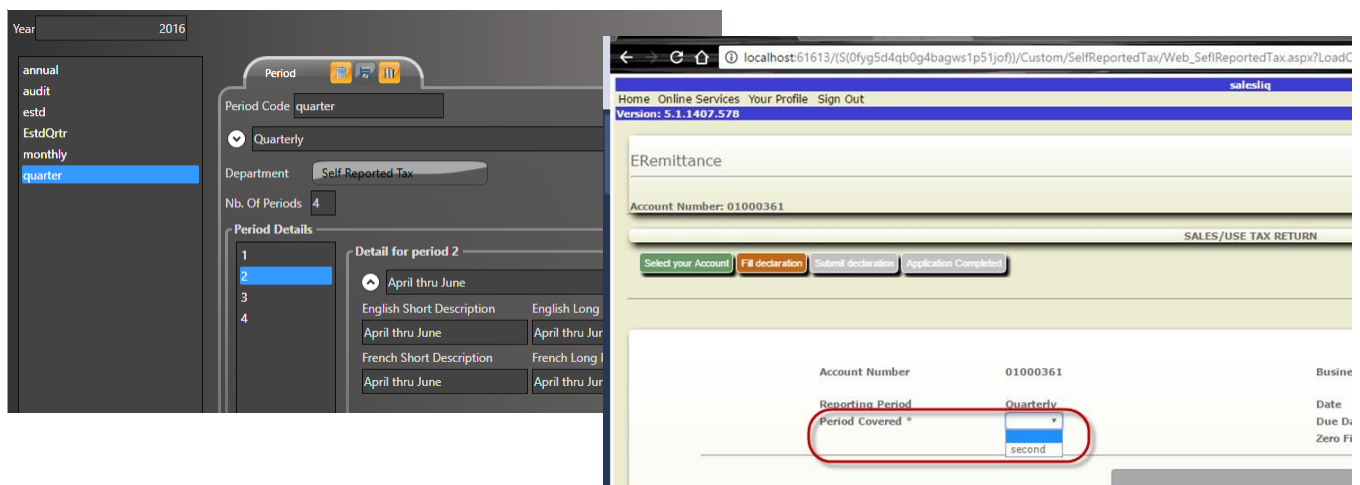
### Customizing the Label Resource

Users that wish to modify the “**Display Periods as text**” label can do so through the GNA Resource File editor, (use the WD > WEBSITEMAINTENANCE > CHKSRT\_SHOWVERBIAGE\_TX) key.

The default setting that is displayed is the Period Details value maintained in (Table: VT\_USER). When enabled, the Long Description value is now displayed in the eRemittance online form.

### Presentation in eGovern

When the Display Periods as text option is enabled in the GNA, users of the online eRemittance form will note that periods are now displayed using the text description that is entered in the period Long Description parameter.



**NOTE:** User should note that this feature will only present itself in the eGovern – Public Self Service Portal (Govern Release 5.1 / 6.0 / 6.1).

## APPENDIX

### Tables

The following tables are implicated in the implementation of this feature:

- VT\_USER
- ST\_PARM\_DETAILS