



# **101-std-frm-003**

## **Web Browser Integration**

**Release 6.0**

**Last Revision Update: 3/26/20**

# Version History

Version	Date	Modified By	Description
1.0	2020/02/12	Olusegun Olaniyan	Document creation document

## Table of Contents

Version History.....	2
Overview .....	4
Description.....	5
Getting Started.....	6
Web Browser Integration (WBI) – Business Rules .....	6
Best Practice.....	7
Creating a New Model and Form for Web Browser Integration .....	8
Creating the Business Model in the Business Entity Designer (BED) .....	8
Adding a Root Entity to the New Model .....	9
Configuring the New Business Model in the OFD .....	10
Adding the New Form to a Profile .....	11
Defining Security for the New Form .....	11
Defining Security for the New Form .....	11
Configuring the Custom Entity in the OFD.....	12
Hiding the Root Entity and Adding Security.....	14
Viewing the Integrated Web Browser in Govern .....	15

## Overview

The OpenForms Application Browser form technology is a form that is based on the Web Browser OpenForms technology. This form can be used as a container for simple, e.g. Web Browser, to complex integrations such as MATIX, Governs' *Geographic Information Services (GIS)* solution.

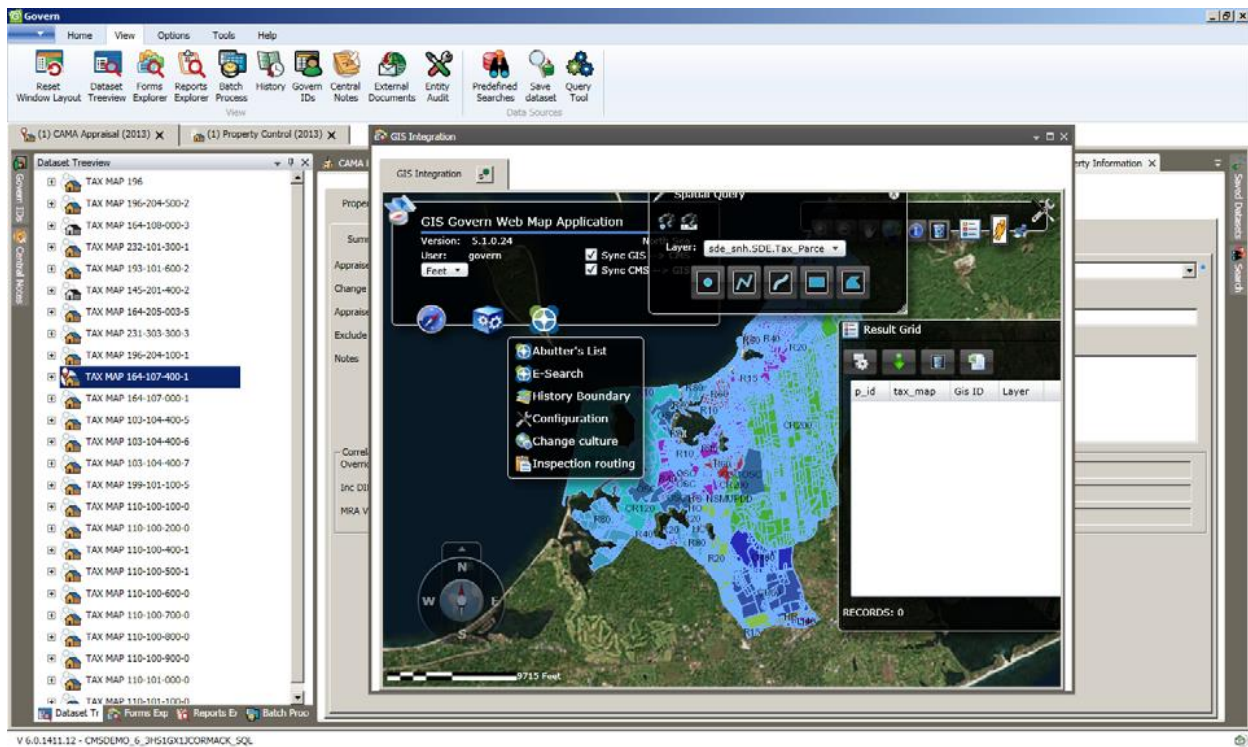
An unlimited number of forms can be set up to meet the requirements for displaying spatial, and tabular content of profile users. In addition, an unlimited number of Application Browsers can be configured in a form. These forms can be set up with options that can include the following Key Types, e.g. Parcel ID (P\_ID), Name ID (NA\_ID), as well as Unformatted Tax Map. Other options include configuration via GIS Server URL, through Synchronization Options, and by Viewing Tabular Data.

For a basic integration, *Web Browser Integration (WBI)* can be used for adding an interactive website to Govern OpenForms. For example, you could use WBI to add a GIS web browser interface, such as the Govern GIS Explorer, to a Govern user form and Profile. You could then select records in Govern and view them on the GIS interface. You could also select records on the GIS interface and load them to the Govern Treeview, with the option to set up manual or automatic synchronization between Govern and the website.

The WBI control is added to a custom entity in the *Govern OpenForms Designer (OFD)*. All configuration is performed in the OFD including any related security settings.

## Description

Web Browser Integration (WBI) is used for adding an interactive website to Govern OpenForms. For example, you could use WBI to add a Geographic Information Services (GIS) web browser interface, such as the Govern GIS Explorer, to a Govern user form. This is illustrated in the following screen shot.



WBI is supported by most websites. It is fully integrated with Govern. It implements predefined commands to add the following functionalities:

- Loading all records from the Govern treeview to the website
- Loading the active records in Govern to the website
- Replacing all records in the Govern treeview with a list provided by the website
- Replacing the active record in Govern with a list provided by the website

WBI is configured through a custom control added to a form and entity in the Govern OpenForms Designer (OFD). The recommended setup and configuration procedures are described in the following sections:

- [Getting Started](#)
- [Configuring the Custom Entity in the OFD](#)
- [Viewing the Integrated Web Browser in Govern](#)

## Getting Started

Before configuring Web Browser Integration, it is important to understand the following information and follow the procedures for the preliminary steps:

- [Business Rules for Web Browser Integration](#)
- [Best Practices](#)
- [Creating a New Model and Form for Web Browser Integration](#)

## Web Browser Integration (WBI) – Business Rules

WBI Integration is available as a Custom Control in the OFD. Custom Controls contain specialized code that performs specific actions. They can be added anywhere on an entity. In the following case, the custom control is added to a custom entity because an integrated web site needs the space of an entire entity.

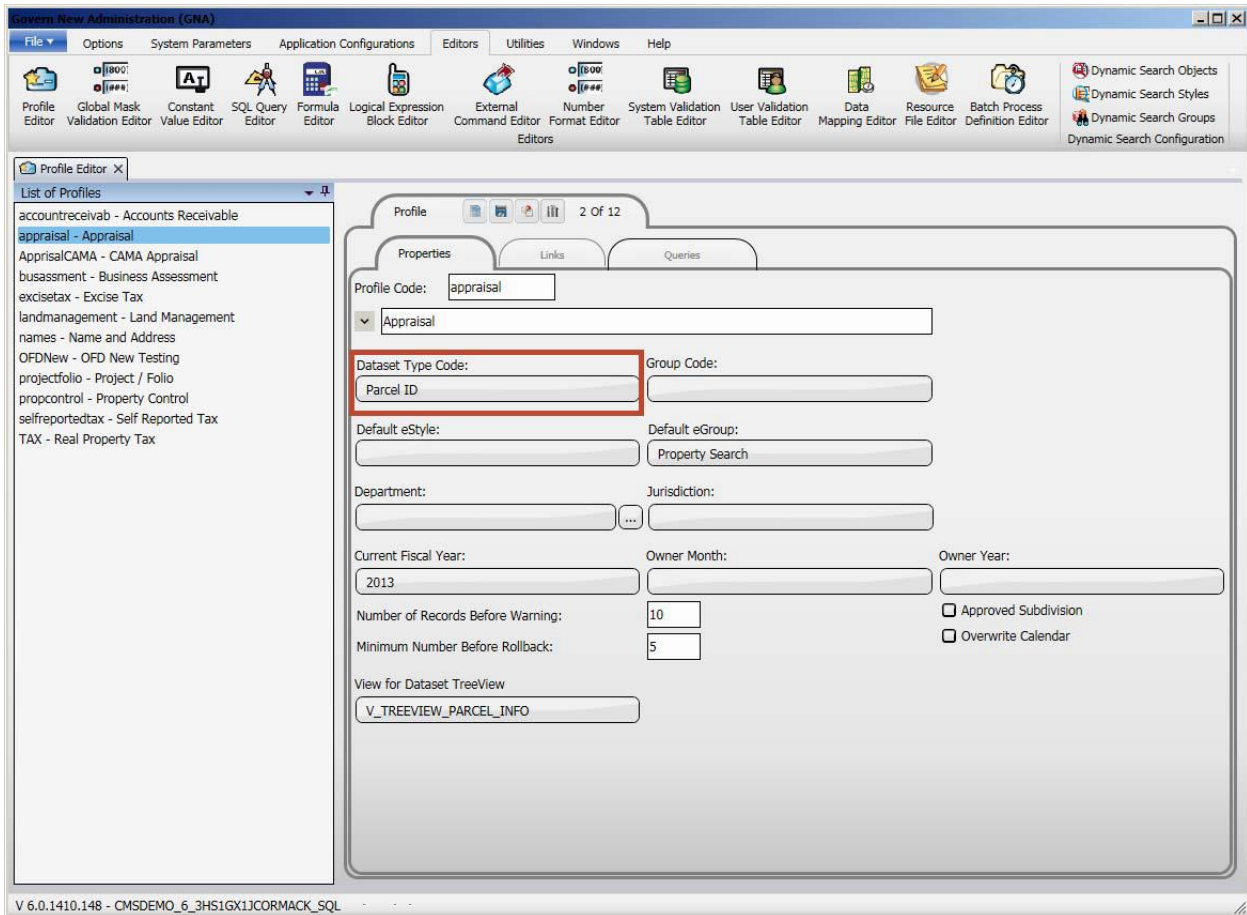
A custom entity cannot stand alone. It needs to be added to an existing form and linked to another entity on the form. It is recommended to use the Root Entity. The form must then be added to a Profile in order to make it available in Govern. The same form can then be added to multiple Profiles.

Configuration for the WBI control is performed in the Govern *OpenForms Designer (OFD)*; security permissions are also defined in the OFD.

For successful configuration the following steps must be applied:

- The WBI control must be added to a custom entity.
- The custom entity must be added to an OpenForms form.
- The form must be added to a Profile.
- The Dataset Type Code for the Profile must be set to Parcel ID (**P\_ID**) or the Name ID (**NA\_ID**) and must correspond to the value set for the **SelectedKeyType**.

The Dataset Type Code is shown in the following screen shot:



Refer to the documentation on the GNA Profile Editor for details on the Dataset Type Code.

- The form to which the WBI control is added is always floating.

## Best Practice

Although you can add the WBI custom control to any form, it is recommended to create a new business model in the Govern Business Entity Designer (BED) and add the SY\_Empty entity to the model, as the root entity. You will then add the custom entity to the new model in the OFD.

This method has the following advantages:

- If you use an existing Govern model, your changes are overwritten when you import updated models.

If you create a new model with a new name, it is not overwritten.

- A custom entity with the Web Browser Integration is always floating. If you add it to a form with multiple entities, it could be confusing.

- The SY\_Empty entity does not have many associated attributes and has no associated calculations.

## Creating a New Model and Form for Web Browser Integration

The following sections run through the procedures and best practices for creating a new business model and form for Web Browser Integration:

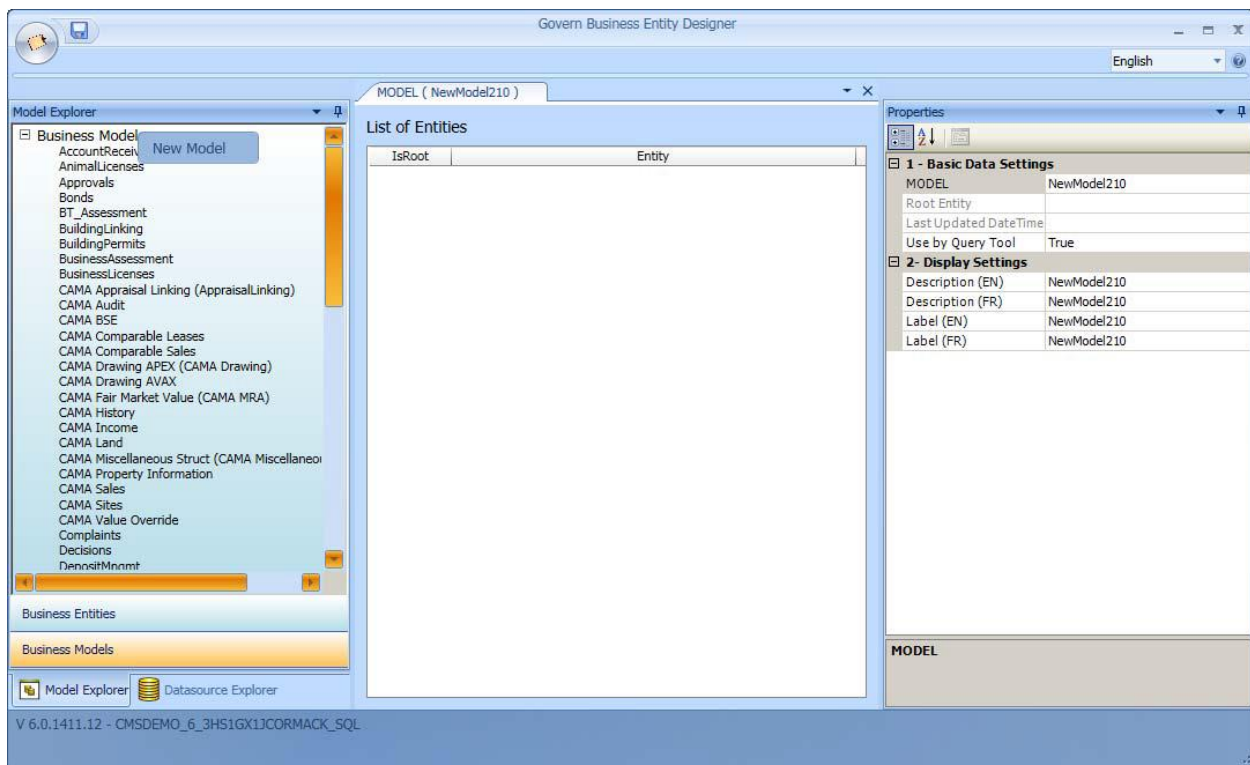
- Creating the Business Model in the Business Entity Designer (BED) on page 122
- Adding a Root Entity to the New Model on page 123
- Configuring the New Business Model in the OFD on page 125
- Adding the New Form to a Profile on page 126
- Defining Security for the New Form on page 127

## Creating the Business Model in the Business Entity Designer (BED)

The first step is to create a new model for Web Browser Integration and assign a unique name to it. This ensures that the model will not be overwritten when you import updated OpenForms models to your deployment.

To create a new business model:

1. Launch the BED.
2. Open the Model Explorer.





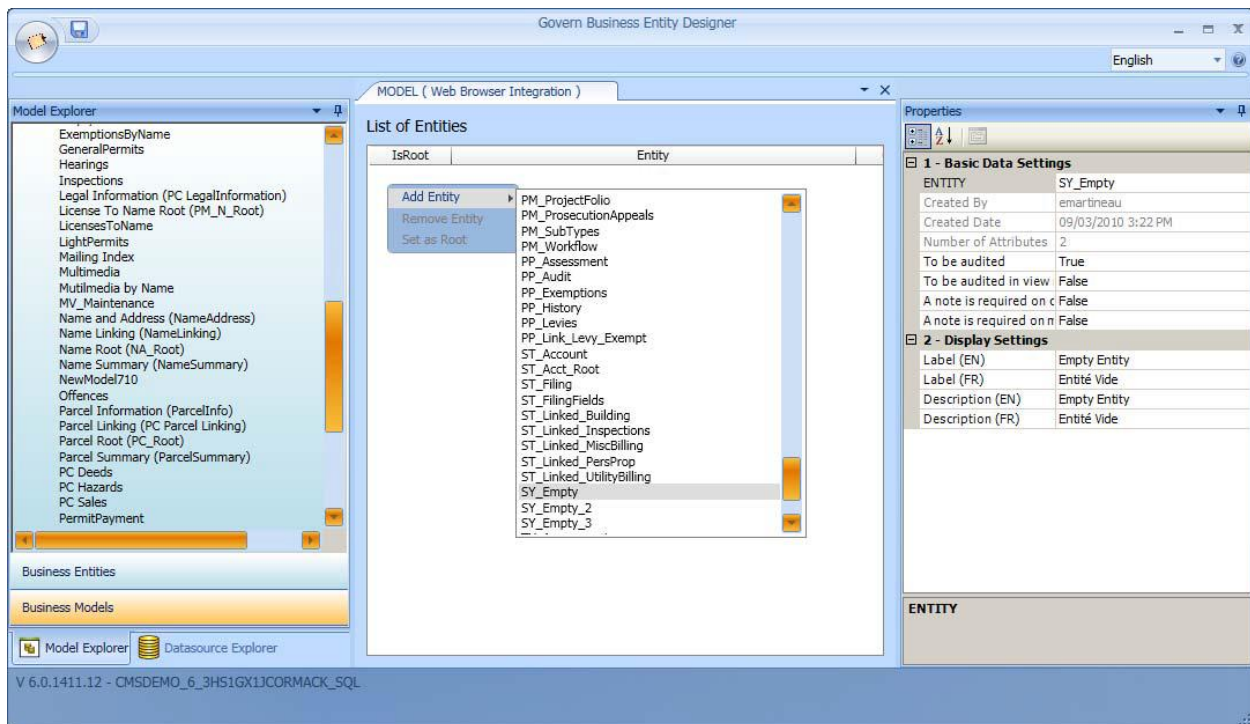
3. Right-click on the heading Business Models at the top of Model Explorer.
4. Select New Model.
5. Enter a name for model in the Model text box.
6. By default, all business models are available for use in the QueryTool. Select False in field if you do not want to run queries on the model in the QueryTool.
7. Enter English and French Descriptions in order to identify the model in the Business Entity Designer.
8. Enter English and French Labels in order to identify the model in the OpenForms Designer (BED)
9. Click Save.

## Adding a Root Entity to the New Model

The WBI Controller is added to a Custom Entity. A root entity is required. If you are adding a Web site that uses name information for the integration with Govern, select an entity that includes the Name ID (NA\_ID). Otherwise if the integration is based on Parcel Information, select an entity that includes the Parcel ID (P\_ID).

To add a Root Entity:

1. Open the business model in the BED.
2. Right click anywhere inside the BED Editor and select Add Entity.



**TIP:** You can use SY\_Empty for the Web Integration, in order to facilitate the process. It does not have many attributes associated with it and has no associated calculations. You could also create a new entity.

3. Select the entity from the drop-down list.  
By default, the first entity added to a model is the Root Entity.
4. Click Save.


**NOTE:** If the entity is added to multiple business models, any changes that you make to the entity in one business model apply to the entity in all business models.

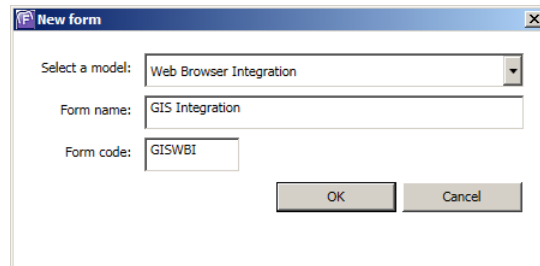
For example, if you add the SY\_Empty entity to your model and change the To be audited. Label, or Description parameters, these changes apply to all models that contain SY\_Empty.

## Configuring the New Business Model in the OFD

The next step is to configure the new business model to the OpenForms Designer (OFD).

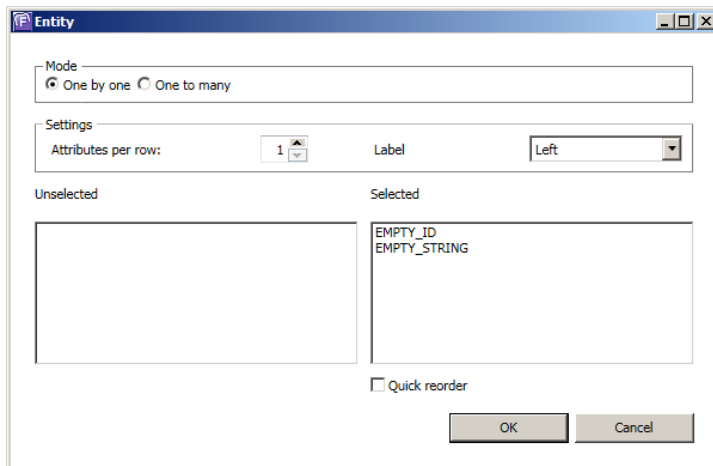
To configure the new business model:

1. Launch the OFD.
2. Click the New Form icon  [+] to open the New Form dialog box.
3. Select the model you created in the BED.
4. Enter a Form name. to identify the form in the OFD. You can change the name at any time.
5. Enter a code in the Form Code to identify the model in the database.
6. Click Save. This new form opens in the OFD.



The 'New form' dialog box shows the following fields and options:

- Select a model:** A dropdown menu with 'Web Browser Integration' selected.
- Form name:** A text field containing 'GIS Integration'.
- Form code:** A text field containing 'GISWBI'.
- Buttons:** 'OK' and 'Cancel' buttons at the bottom right.



The 'Entity' configuration dialog box shows the following settings:

- Mode:** Radio buttons for 'One by one' (selected) and 'One to many'.
- Settings:**
  - Attributes per row:** A spinner box set to '1'.
  - Label:** A dropdown menu with 'Left' selected.
- Unselected:** An empty rectangular box.
- Selected:** A list box containing 'EMPTY\_ID' and 'EMPTY\_STRING'.
- Quick reorder:** An unchecked checkbox.
- Buttons:** 'OK' and 'Cancel' buttons at the bottom right.

The root entity is displayed. The idea is to hide the root entity; therefore, no specific setup is required on this form.

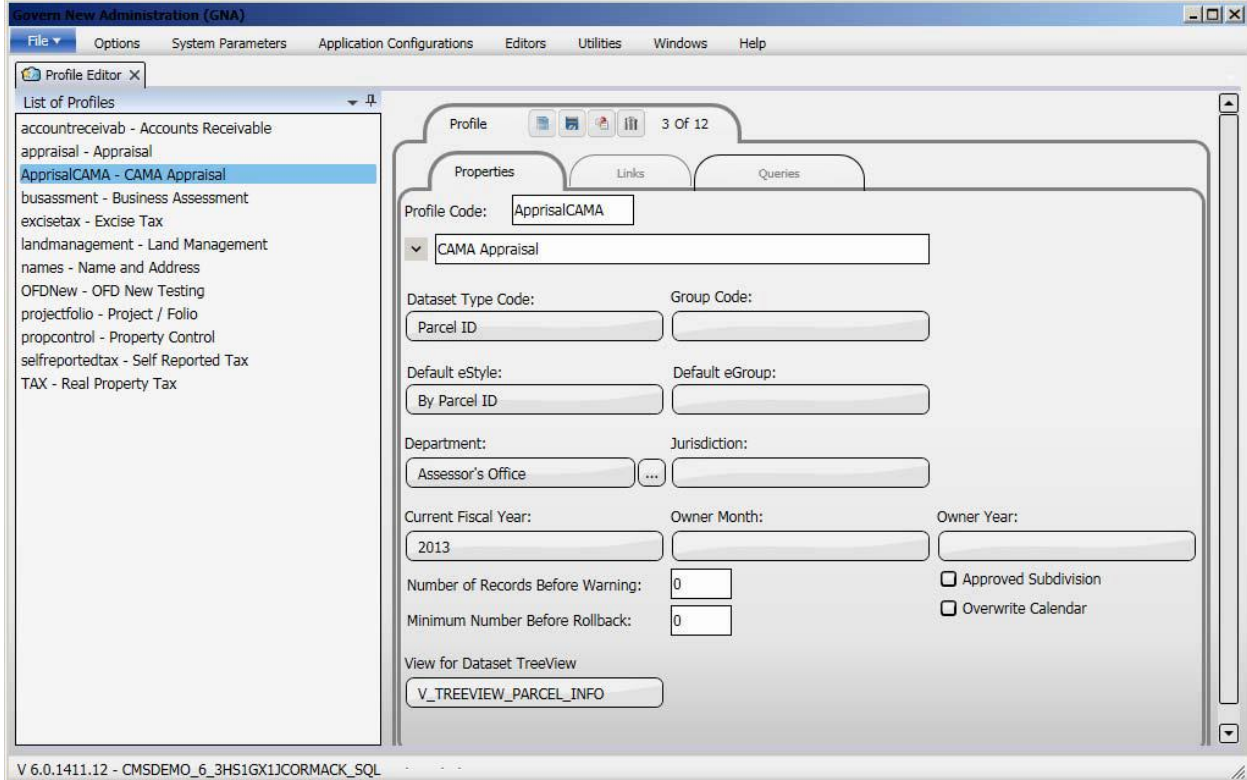
7. Click OK.

## Adding the New Form to a Profile

The next step is to add the form that you just created to a Profile. This makes it available in Govern.

To add the new form to a Profile:

1. Launch Govern New Administration (GNA).
2. Open the Profile to which you want to add the new form.



- The Dataset Type Code must correspond to the value that you set for the SelectedKeyType. See SelectedKeyType on page 130.
3. Click the Links button on the Profile editor and select your new form.
  4. Click OK.
  5. Click Save on the Profile editor.

Refer to the Govern New Administration (GNA) documentation for additional details.

## Defining Security for the New Form

The initial access to view the form is defined in the Security Manager (SM).

To verify or set the security rights on executing the form:

## Defining Security for the New Form

The initial access to view the form is defined in the *Security Manager (SM)*.

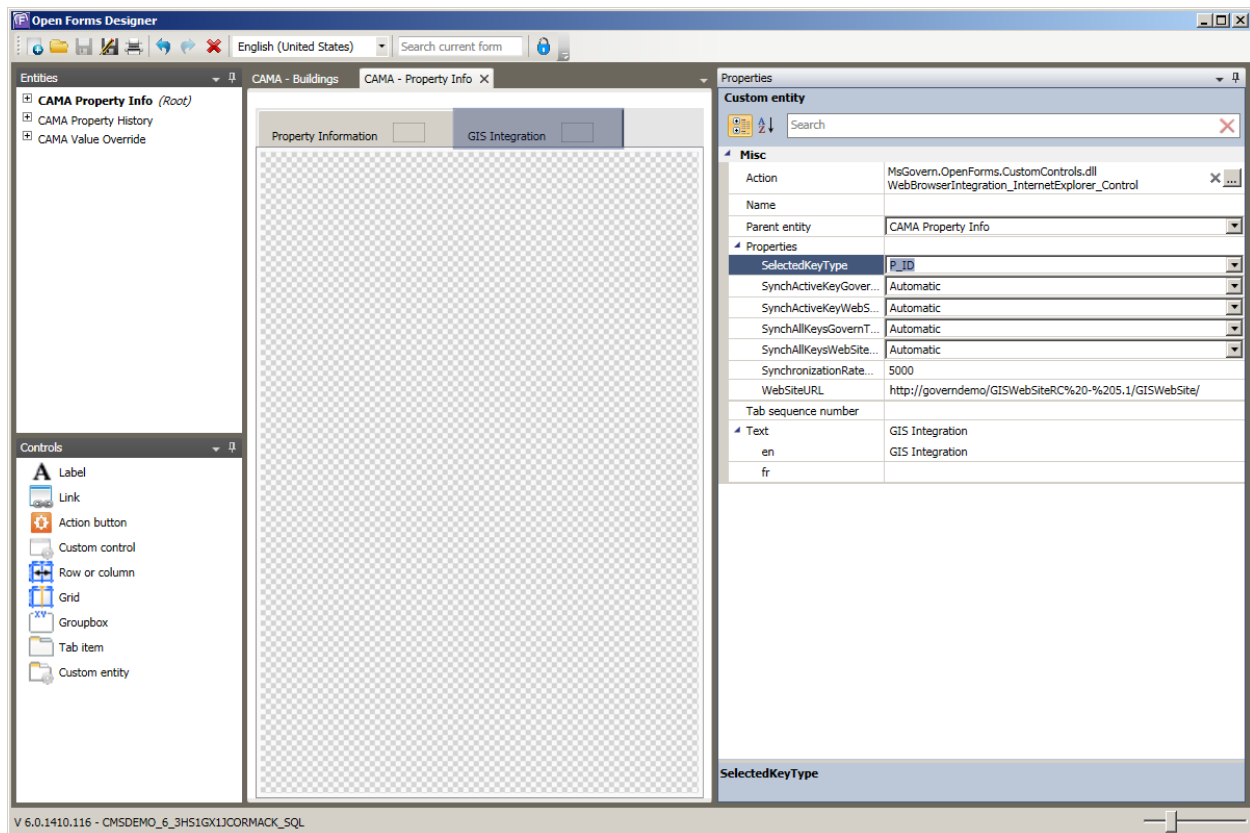
To verify or set the security rights on executing the form:

1. Launch the GSM.
2. Expand your datasource connection key.
3. Select Applications > Govern > Profiles > the Profile you are using for the Web Browser Integration.
4. Select OpenForms > the form you are using for Web Browser Integration.
5. Select Edit or Exclusions and define the rights to execute the form.
6. Click Save.

## Configuring the Custom Entity in the OFD

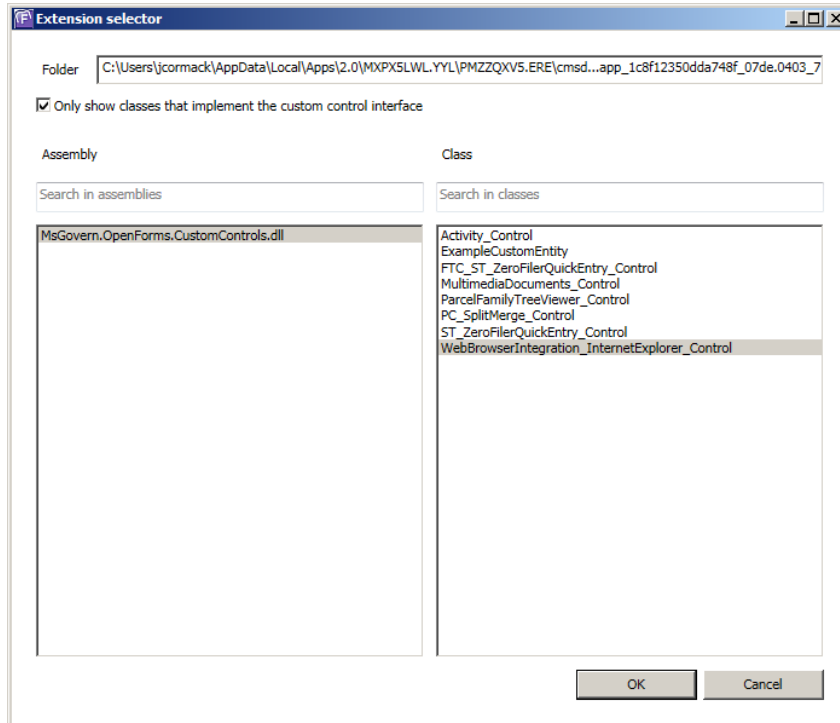
Perform the following steps to add an integrated website to a Govern form.

1. Launch the Govern OpenForms Designer (OFD).
2. Open the form to which you want to add the website.
3. Select the Custom Entity control in the Controls Explorer and drag it to the top of the OFD Editor, beside the other entities.



4. Define the following properties in the Property Explorer:

**Action:** Click the ellipsis button in the Action text box to open the Extension Selector.



- Select Only show classes that implement the custom control interface.
- Select MsGovern.OpenForms.CustomControls.dll under Assembly.
- Select WebBrowserIntegration\_InternetExplorer\_Control under Class.
- Click OK.

**Name:** This is used to identify the entity for the Help files. Enter a name if you are adding a custom help file for the entity.

**Parent Entity:** Select the root entity in the form as the Parent Entity.

**SelectedKeyType:** Select one of the following:

- **None:** If you select this option, there is no interaction between Govern and the website.
- **P\_ID:** Select this option if you are using the P\_ID as the link between Govern and the website.

**NOTE:** The Dataset Type Code in the Profile Editor must also be set to Parcel ID (P ID).

- **Tax\_Map\_Unformat:** Select this option to use the unformatted tax map number as the link between Govern and the website.
- **NA\_ID:** Select this option to use the Name ID (NA\_ID) to establish the link between Govern and the website.

The following **Synchronization** parameters are used for loading records from Govern to the website and from the website to Govern. You need to set each parameter to automatic or manual synchronization.

- **Automatic:** Select Automatic to load the record, or records, automatically, without any user action. Records are refreshed according to the synchronization rate defined in the Synchronization Rate (Milliseconds) parameter.
- **Manual:** Select Manual to load all records when the user clicks an action button.

The action buttons are included in the control, and also appear at the top of the entity in Govern, when Manual is selected.

**SynchActiveKeyGovernToWebSite:** This parameter is used for loading the record that is currently open in Govern to the website. Select Automatic or Manual synchronization.

**SynchAllKeysGovernToWebSite:** This parameter is used for loading all the records that are currently in the Govern treeview to the website. Select Automatic or Manual synchronization.


**SynchActiveKeyWebSiteToGovern:** This parameter is used for loading the record that is open in the website to Govern. Select Automatic or Manual synchronization.

**SynchAllKeysWebSiteToGovern:** This parameter is used for loading all records from the website to Govern. It replaces the records that are currently in the Govern treeview. Select Automatic or Manual synchronization.

**SynchronizationRateMilliSeconds:** This setting is applicable to automatic synchronization only. It is used for setting the frequency at which the website is polled for new information. It is recommended to set it to 1,000 milliseconds (one second) or less.

**WebSiteURL:** Enter the URL of the website that you are integrating.

**Tab Sequence Number:** The tab sequence number is reserved for future use.


**Save:** Click Save  in the OFD to save your configuration settings.

## Hiding the Root Entity and Adding Security

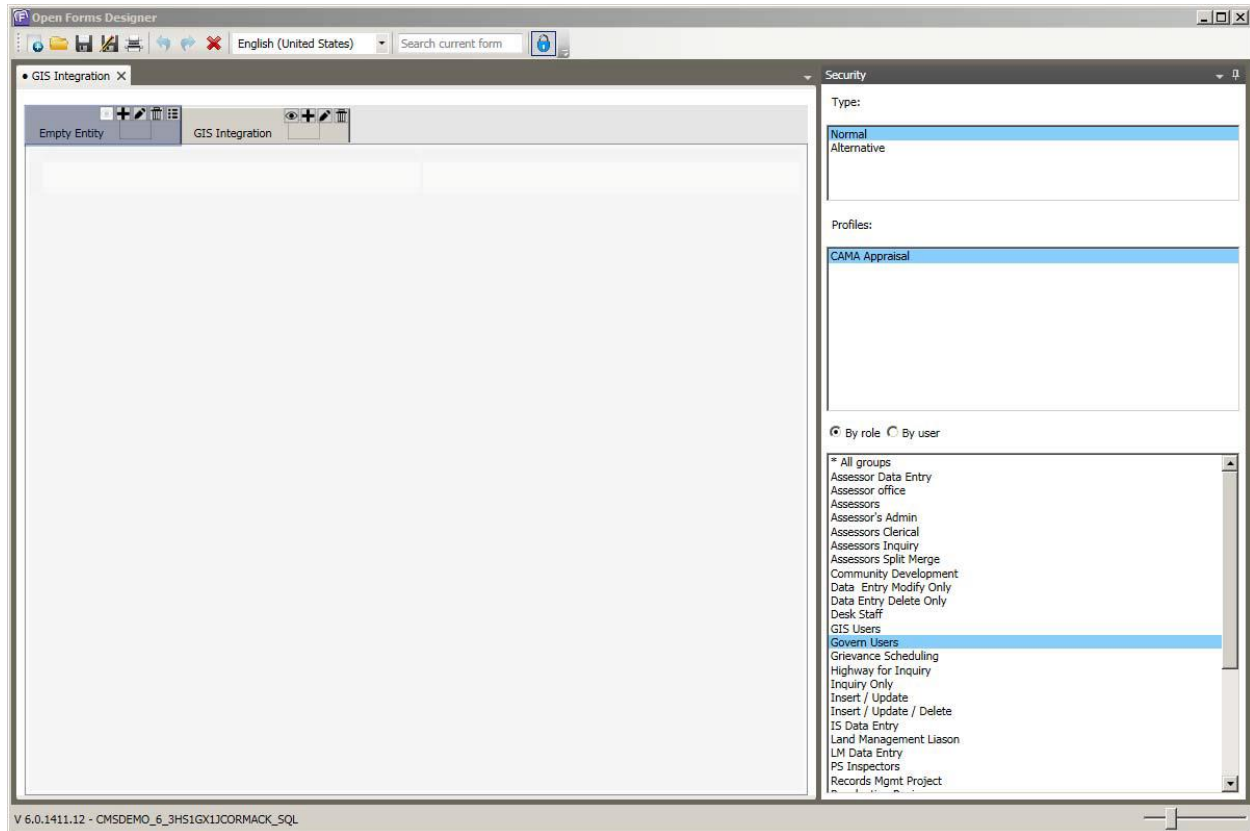
You can set permissions and restrictions for viewing the custom entity that contains the integrated Web browser. The add, edit, delete, and browser rights are not applicable. You need to define security by type: Normal or Alternative, Profile, Role, and user. For more information about security, see Security in the OpenForms Designer on page 160.


To hide the root entity:

1. Launch the OFD.
2. Open the form you are using for Web Browser Integration.

3. Select the root entity.
4. Select the Security icon .

This will open the Security Settings page.



5. Select Normal under Type.
6. Select the Profile for the security rights you are configuring.
7. Select the Role.
8. Click the View  icon.
9. Click Save.
10. Repeat the procedure in order to set the security rights for Alternative security and the other Profiles, Roles, and Users using GIS Integration.

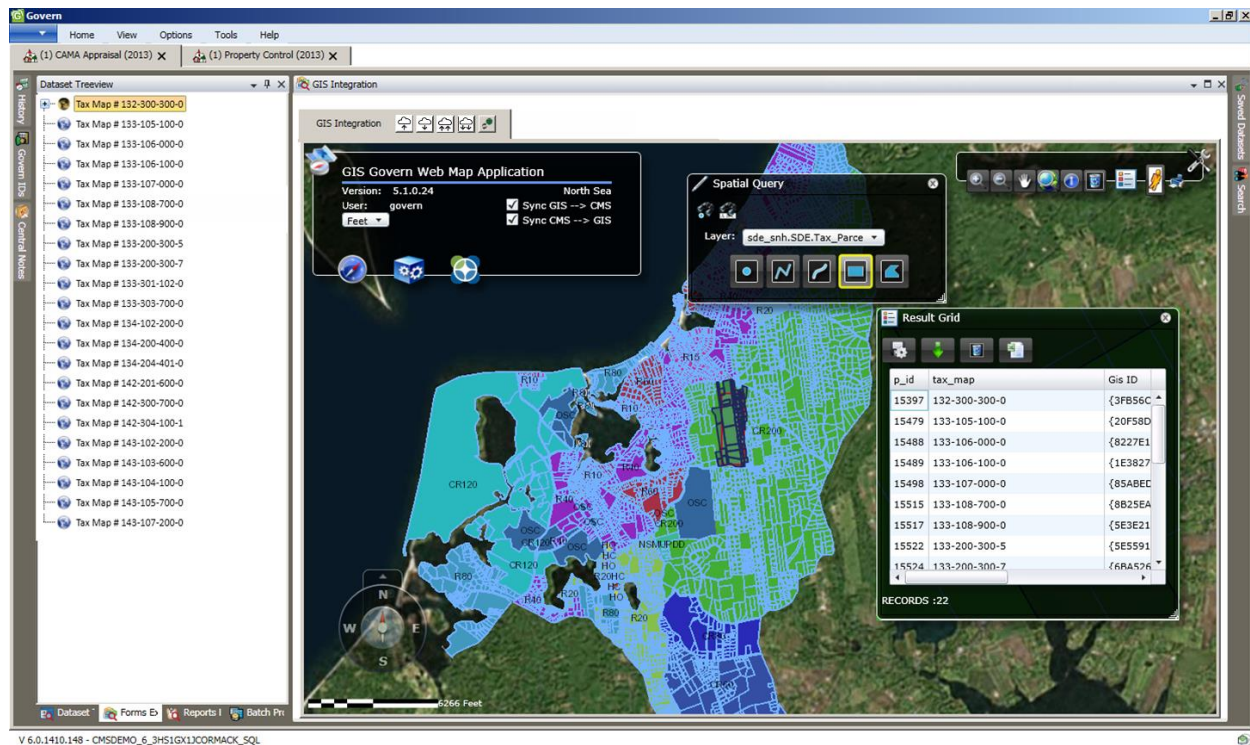
**TIP:** The default Alternative security is the same as Normal security. It is recommended to set up security on the Roles. Then define the exclusions by user.

## Viewing the Integrated Web Browser in Govern


Once the configuration is complete, you can view the integrated web browser in Govern.





The following screen shot displays the Govern GIS Explorer integrated into the Govern CAMA Property Information form via WBI.




In the screen shot, all parameters are set to Manual, therefore, all action buttons appear at the top of the entity.

 **Load the Active Record from Govern to the Website:** Click this icon to load the record that is currently active in Govern to the website. For example, if you have an integrated GIS browser, you could open a parcel in the Property Information form in Govern and view it on the GIS map.

 **Load the Active Record from the Website to Govern:** Click this icon to load the active record from the website to Govern. For example, you could select a parcel on the GIS map and load it to the Govern treeview.

 **Load All Active Records from Govern to the Website:** Click this icon to load all records from the Govern treeview to the website. For example, you could view all the property records that are currently in the Govern treeview on the GIS map.

 **Load All Active Records from the Website to Govern:** Click this icon to load all active records from the website to Govern. This replaces all records that are currently in the Govern treeview with a list of records from the website. For example, you could select several parcels on the GIS map and view them in the Govern treeview.



**Reload the website:** Click this icon to refresh or reload the website. The login page appears if applicable.

**NOTE:** For the synchronization parameters that are set to automatic, there are no action buttons.